



[Go to Product page](#)

Datasheet for ABIN7148722
anti-CSMD2 antibody (AA 1-225)

1 Image

Overview

Quantity:	100 µg
Target:	CSMD2
Binding Specificity:	AA 1-225
Reactivity:	Human
Host:	Rabbit
Clonality:	Polyclonal
Conjugate:	This CSMD2 antibody is un-conjugated
Application:	ELISA, Immunohistochemistry (IHC)

Product Details

Immunogen:	Recombinant Human CUB and sushi domain-containing protein 2 protein (1-225AA)
Isotype:	IgG
Cross-Reactivity:	Human
Purification:	>95%, Protein G purified

Target Details

Target:	CSMD2
Alternative Name:	CSMD2 (CSMD2 Products)
Background:	CSMD2 antibody, CSMD2_HUMAN antibody, CUB and Sushi (SCR repeat) domain antibody, CUB and sushi domain-containing protein 2 antibody, CUB and sushi multiple domains protein

Target Details

2 antibody, dJ1007G16.1 antibody, dJ1007G16.2 antibody, dJ947L8.1 antibody, KIAA1884 antibody

UniProt: [Q7Z408](#)

Application Details

Application Notes: Recommended dilution: IHC:1:20-1:200,

Restrictions: For Research Use only

Handling

Format: Liquid

Buffer: Preservative: 0.03 % Proclin 300
Constituents: 50 % Glycerol, 0.01M PBS, PH 7.4

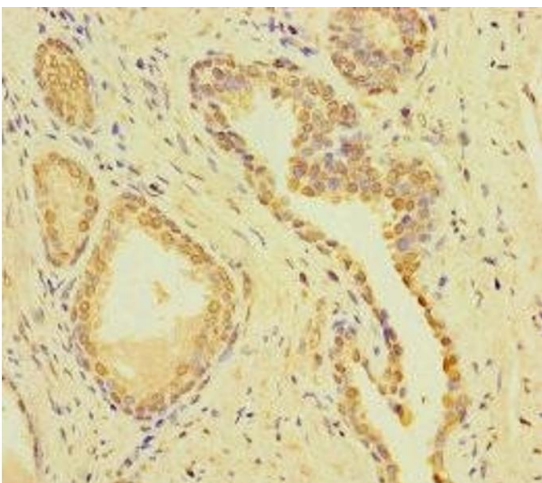
Preservative: ProClin

Precaution of Use: This product contains ProClin: a POISONOUS AND HAZARDOUS SUBSTANCE which should be handled by trained staff only.

Storage: -20 °C,-80 °C

Storage Comment: Upon receipt, store at -20°C or -80°C. Avoid repeated freeze.

Images



Immunohistochemistry

Image 1. Immunohistochemistry of paraffin-embedded human prostate cancer using ABIN7148722 at dilution of 1:100