

Datasheet for ABIN7148726  
**anti-CSMD3 antibody (AA 233-380)**[Go to Product page](#)

## 2 Images

## Overview

Quantity:	100 µg
Target:	CSMD3
Binding Specificity:	AA 233-380
Reactivity:	Human
Host:	Rabbit
Clonality:	Polyclonal
Conjugate:	This CSMD3 antibody is un-conjugated
Application:	ELISA, Immunohistochemistry (IHC), Immunofluorescence (IF)

## Product Details

Immunogen:	Recombinant Human CUB and sushi domain-containing protein 3 protein (233-380AA)
Isotype:	IgG
Cross-Reactivity:	Human
Purification:	>95%, Protein G purified

## Target Details

Target:	CSMD3
Alternative Name:	CSMD3 ( <a href="#">CSMD3 Products</a> )
Background:	Background: Involved in dendrite development. Aliases: CSMD3 antibody, KIAA1894CUB and sushi domain-containing protein 3 antibody, CUB

## Target Details

and sushi multiple domains protein 3 antibody

UniProt: [Q7Z407](#)

## Application Details

Application Notes: Recommended dilution: IHC:1:200-1:500, IF:1:50-1:200,

Restrictions: For Research Use only

## Handling

Format: Liquid

Buffer: Preservative: 0.03 % Proclin 300  
Constituents: 50 % Glycerol, 0.01M PBS, pH 7.4

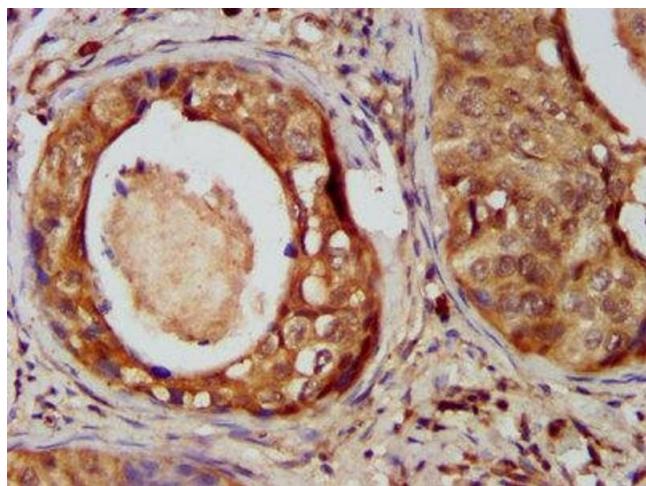
Preservative: ProClin

Precaution of Use: This product contains ProClin: a POISONOUS AND HAZARDOUS SUBSTANCE which should be handled by trained staff only.

Storage: -20 °C,-80 °C

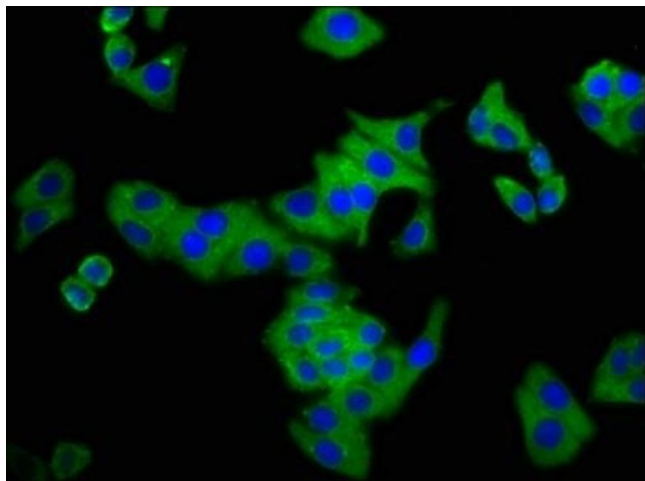
Storage Comment: Upon receipt, store at -20°C or -80°C. Avoid repeated freeze.

## Images



### Immunohistochemistry

**Image 1.** IHC image of ABIN7148726 diluted at 1:400 and staining in paraffin-embedded human cervical cancer performed on a Leica Bond™ system. After dewaxing and hydration, antigen retrieval was mediated by high pressure in a citrate buffer (pH 6.0). Section was blocked with 10 % normal goat serum 30 min at RT. Then primary antibody (1 % BSA) was incubated at 4 °C overnight. The primary is detected by a biotinylated secondary antibody and visualized using an HRP conjugated SP system.



#### Immunofluorescence

**Image 2.** Immunofluorescence staining of HepG2 cells with ABIN7148726 at 1: 133, counter-stained with DAPI. The cells were fixed in 4 % formaldehyde, permeabilized tissue using 0.2 % Triton X-100 and blocked in 10 % normal Goat Serum. The cells were then incubated with the antibody overnight at 4 °C. The secondary antibody was Alexa Fluor 488-conjugated AffiniPure Goat Anti-Rabbit IgG(H+L) .