

Datasheet for ABIN7148743
anti-CELF6 antibody (AA 292-395)[Go to Product page](#)

1 Image

Overview

Quantity:	100 µg
Target:	CELF6
Binding Specificity:	AA 292-395
Reactivity:	Human
Host:	Rabbit
Clonality:	Polyclonal
Conjugate:	This CELF6 antibody is un-conjugated
Application:	Western Blotting (WB), ELISA

Product Details

Immunogen:	Recombinant Human CUGBP Elav-like family member 6 protein (292-395AA)
Isotype:	IgG
Cross-Reactivity:	Human
Purification:	>95%, Protein G purified

Target Details

Target:	CELF6
Alternative Name:	CELF6 (CELF6 Products)
Background:	Background: RNA-binding protein implicated in the regulation of pre-mRNA alternative splicing. Mediates exon inclusion and/or exclusion in pre-mRNA that are subject to tissue-specific and

Target Details

developmentally regulated alternative splicing. Specifically activates exon 5 inclusion of TNNT2 in a muscle-specific splicing enhancer (MSE)-dependent manner. Promotes also exon exclusion of INSR pre-mRNA.

Aliases: 6330569016Rik antibody, Bruno like 6, RNA binding protein (Drosophila) antibody, bruno like 6, RNA binding protein antibody, Bruno like protein 6 antibody, Bruno-like protein 6 antibody, BRUNOL6 antibody, CELF-6 antibody, Celf6 antibody, CELF6_HUMAN antibody, CUGBP- and ETR-3-like factor 6 antibody, CUGBP and ETR3 like factor 6 antibody, CUGBP Elav-like family member 6 antibody, RNA binding protein BRUNOL 6 antibody, RNA-binding protein BRUNOL-6 antibody

UniProt: [Q96J87](#)

Application Details

Application Notes: Recommended dilution: WB:1:500-1:5000,

Restrictions: For Research Use only

Handling

Format: Liquid

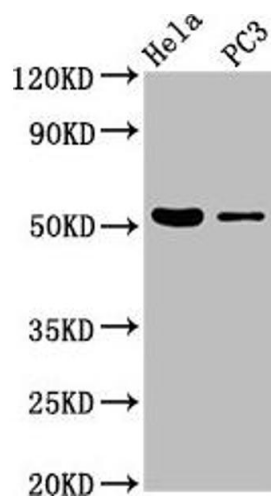
Buffer: Preservative: 0.03 % Proclin 300
Constituents: 50 % Glycerol, 0.01M PBS, pH 7.4

Preservative: ProClin

Precaution of Use: This product contains ProClin: a POISONOUS AND HAZARDOUS SUBSTANCE which should be handled by trained staff only.

Storage: -20 °C,-80 °C

Storage Comment: Upon receipt, store at -20°C or -80°C. Avoid repeated freeze.



Western Blotting

Image 1. Western Blot Positive WB detected in: HeLa whole cell lysate, PC-3 whole cell lysate All lanes: CELF6 antibody at 3.7 µg/mL Secondary Goat polyclonal to rabbit IgG at 1/50000 dilution Predicted band size: 51, 39, 48, 37 kDa Observed band size: 51 kDa