

Datasheet for ABIN7148747
anti-Cullin 1 antibody (AA 500-776)[Go to Product page](#)

1 Image

Overview

Quantity:	100 µL
Target:	Cullin 1 (CUL1)
Binding Specificity:	AA 500-776
Reactivity:	Human
Host:	Rabbit
Clonality:	Polyclonal
Conjugate:	This Cullin 1 antibody is un-conjugated
Application:	Western Blotting (WB), ELISA

Product Details

Immunogen:	Recombinant Human Cullin-1 protein (500-776AA)
Isotype:	IgG
Cross-Reactivity:	Human
Purification:	Antigen Affinity Purified

Target Details

Target:	Cullin 1 (CUL1)
Alternative Name:	CUL1 (CUL1 Products)
Background:	Background: Core component of multiple cullin-RING-based SCF (SKP1-CUL1-F-box protein) E3 ubiquitin-protein ligase complexes, which mediate the ubiquitination of proteins involved in cell

Target Details

cycle progression, signal transduction and transcription. In the SCF complex, serves as a rigid scaffold that organizes the SKP1-F-box protein and RBX1 subunits. May contribute to catalysis through positioning of the substrate and the ubiquitin-conjugating enzyme. The E3 ubiquitin-protein ligase activity of the complex is dependent on the neddylation of the cullin subunit and exchange of the substrate recognition component is mediated by TIP120A/CAND1. The functional specificity of the SCF complex depends on the F-box protein as substrate recognition component. SCF(BTRC) and SCF(FBXW11) direct ubiquitination of CTNNB1 and participate in Wnt signaling. SCF(FBXW11) directs ubiquitination of phosphorylated NFKBIA. SCF(BTRC) directs ubiquitination of NFKBIB, NFKBIE, ATF4, SMAD3, SMAD4, CDC25A, FBXO5 and probably NFKB2. SCF(SKP2) directs ubiquitination of phosphorylated CDKN1B/p27kip and is involved in regulation of G1/S transition. SCF(SKP2) directs ubiquitination of ORC1, CDT1, RBL2, ELF4, CDKN1A, RAG2, FOXO1A, and probably MYC and TAL1. SCF(FBXW7) directs ubiquitination of cyclin E, NOTCH1 released notch intracellular domain (NICD), and probably PSEN1. SCF(FBXW2) directs ubiquitination of GCM1. SCF(FBXO32) directs ubiquitination of MYOD1. SCF(FBXO7) directs ubiquitination of BIRC2 and DLGAP5. SCF(FBXO33) directs ubiquitination of YBX1. SCF(FBXO1) directs ubiquitination of BCL6 and DTL but does not seem to direct ubiquitination of TP53. SCF(BTRC) mediates the ubiquitination of NFKBIA at '\\Lys-21\\' and '\\Lys-22\\', the degradation frees the associated NFKB1-RELA dimer to translocate into the nucleus and to activate transcription. SCF(CCNF) directs ubiquitination of CCP110. SCF(FBXL3) and SCF(FBXL21) direct ubiquitination of CRY1 and CRY2. SCF(FBXO9) direct ubiquitination of TTI1 and TTI2. SCF(FBXO10) directs ubiquitination of BCL2.

Aliases: CUL 1 antibody, CUL-1 antibody, CUL1 antibody, CUL1_HUMAN antibody, Cullin-1 antibody, Cullin1 antibody, MGC149834 antibody, MGC149835 antibody

UniProt: [Q13616](#)

Pathways: [Cell Division Cycle](#), [Hedgehog Signaling](#), [Mitotic G1-G1/S Phases](#), [Regulation of Cell Size](#)

Application Details

Application Notes: Recommended dilution: WB:1:500-1:1000,

Restrictions: For Research Use only

Handling

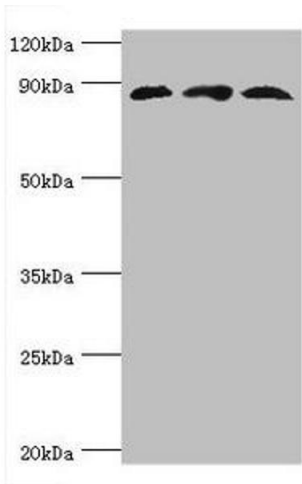
Format: Liquid

Buffer: PBS with 0.02 % sodium azide, 50 % glycerol, pH 7.3.

Handling

Preservative:	Sodium azide
Precaution of Use:	This product contains Sodium azide: a POISONOUS AND HAZARDOUS SUBSTANCE which should be handled by trained staff only.
Storage:	-20 °C,-80 °C
Storage Comment:	Upon receipt, store at -20°C or -80°C. Avoid repeated freeze.

Images



Western Blotting

Image 1. Western blot All lanes: Cullin-1 antibody at 6 μ g/mL Lane 1: PC-3 whole cell lysate Lane 2: K562 whole cell lysate Lane 3: Hela whole cell lysate Secondary Goat polyclonal to rabbit IgG at 1/10000 dilution Predicted band size: 90 kDa Observed band size: 90 kDa