

Datasheet for ABIN7148758
anti-Cullin 5 antibody (AA 1-300)



[Go to Product page](#)

2 Images

Overview

Quantity:	100 µL
Target:	Cullin 5 (CUL5)
Binding Specificity:	AA 1-300
Reactivity:	Human
Host:	Rabbit
Clonality:	Polyclonal
Conjugate:	This Cullin 5 antibody is un-conjugated
Application:	ELISA, Immunohistochemistry (IHC)

Product Details

Immunogen:	Recombinant Human Cullin-5 protein (1-300AA)
Isotype:	IgG
Cross-Reactivity:	Human
Purification:	Antigen Affinity Purified

Target Details

Target:	Cullin 5 (CUL5)
Alternative Name:	CUL5 (CUL5 Products)
Background:	Background: Core component of multiple SCF-like ECS (Elongin-Cullin 2/5-SOCS-box protein) E3 ubiquitin-protein ligase complexes, which mediate the ubiquitination and subsequent

Target Details

proteasomal degradation of target proteins. As a scaffold protein may contribute to catalysis through positioning of the substrate and the ubiquitin-conjugating enzyme. The functional specificity of the E3 ubiquitin-protein ligase complex depends on the variable substrate recognition component. ECS(SOCS1) seems to direct ubiquitination of JAK2. Seems to be involved in proteasomal degradation of p53/TP53 stimulated by adenovirus E1B-55 kDa protein. May form a cell surface vasopressin receptor.

Aliases: CUL 5 antibody, CUL-5 antibody, CUL5 antibody, CUL5_HUMAN antibody, Cullin 5 antibody, Cullin-5 (vasopressin-activated calcium-mobilizing receptor-1) antibody, Cullin-5 antibody, Cullin5 antibody, VACM 1 antibody, VACM-1 antibody, VACM1 antibody, Vasopressin activated calcium mobilizing receptor 1 antibody, Vasopressin activated calcium mobilizing receptor antibody, Vasopressin-activated calcium-mobilizing receptor 1 antibody, Vasopressin-activated calcium-mobilizing receptor-1 antibody

UniProt: [Q93034](#)

Pathways: [Regulation of Muscle Cell Differentiation, Skeletal Muscle Fiber Development](#)

Application Details

Application Notes: Recommended dilution: IHC:1:20-1:200,

Restrictions: For Research Use only

Handling

Format: Liquid

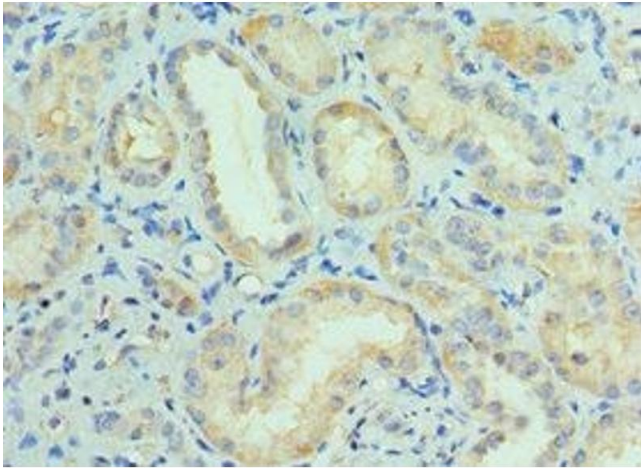
Buffer: PBS with 0.02 % sodium azide, 50 % glycerol, pH 7.3.

Preservative: Sodium azide

Precaution of Use: This product contains Sodium azide: a POISONOUS AND HAZARDOUS SUBSTANCE which should be handled by trained staff only.

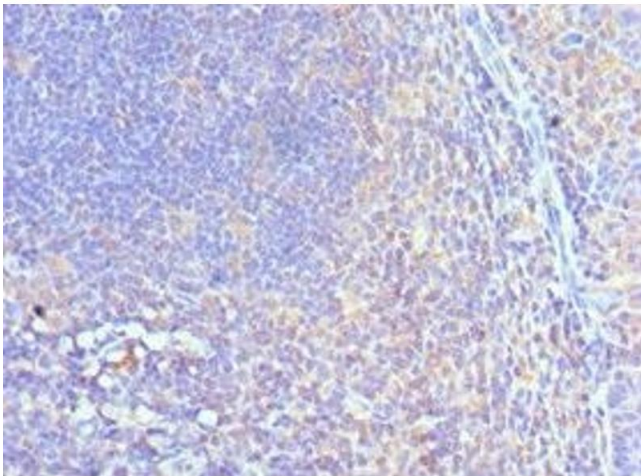
Storage: -20 °C,-80 °C

Storage Comment: Upon receipt, store at -20°C or -80°C. Avoid repeated freeze.



Immunohistochemistry

Image 1. Immunohistochemistry of paraffin-embedded human kidney tissue using ABIN7148758 at dilution of 1:100



Immunohistochemistry

Image 2. Immunohistochemistry of paraffin-embedded human tonsil tissue using ABIN7148758 at dilution of 1:100