

Datasheet for ABIN7148772
anti-CX3CR1 antibody (AA 298-351)



[Go to Product page](#)

2 Images

Overview

Quantity:	100 µg
Target:	CX3CR1
Binding Specificity:	AA 298-351
Reactivity:	Human
Host:	Rabbit
Clonality:	Polyclonal
Conjugate:	This CX3CR1 antibody is un-conjugated
Application:	ELISA, Immunohistochemistry (IHC), Immunofluorescence (IF)

Product Details

Immunogen:	Recombinant Human CX3C chemokine receptor 1 protein (298-351AA)
Isotype:	IgG
Cross-Reactivity:	Human
Purification:	>95%, Protein G purified

Target Details

Target:	CX3CR1
Alternative Name:	CX3CR1 (CX3CR1 Products)
Background:	Background: Receptor for the CX3C chemokine fractalkine (CX3CL1), binds to CX3CL1 and mediates both its adhesive and migratory functions (PubMed:9390561, PubMed:23125415).

Target Details

Acts as coreceptor with CD4 for HIV-1 virus envelope protein (in vitro) (PubMed:9726990).
Isoform 2 and isoform 3 seem to be more potent HIV-1 coreceptors than isoform 1 (PubMed:14607932).

Aliases: Beta chemokine receptor-like 1 antibody, C X3 C CKR 1 antibody, C-X3-C CKR-1 antibody, CCRL1 antibody, Chemokine C X3 C motif receptor 1 antibody, CMK BRL 1 antibody, CMK-BRL-1 antibody, CMK-BRL1 antibody, CMKBLR1 antibody, CMKDR1 antibody, CX3C chemokine receptor 1 antibody, CX3C CKR1 antibody, CX3C1_HUMAN antibody, CX3CR1 antibody, Fractalkine receptor antibody, G-protein coupled receptor 13 antibody, GPR13 antibody, GPRV28 antibody, V28 antibody

UniProt: [P49238](#)

Pathways: [Cellular Response to Molecule of Bacterial Origin](#)

Application Details

Application Notes: Recommended dilution: IHC:1:20-1:200, IF:1:50-1:200,

Restrictions: For Research Use only

Handling

Format: Liquid

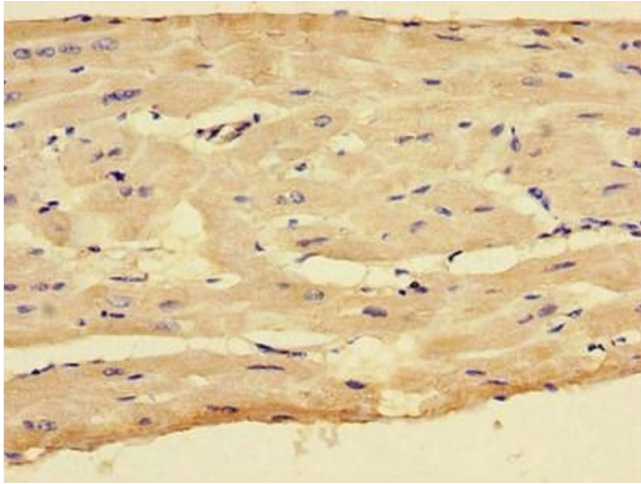
Buffer: Preservative: 0.03 % Proclin 300
Constituents: 50 % Glycerol, 0.01M PBS, PH 7.4

Preservative: ProClin

Precaution of Use: This product contains ProClin: a POISONOUS AND HAZARDOUS SUBSTANCE which should be handled by trained staff only.

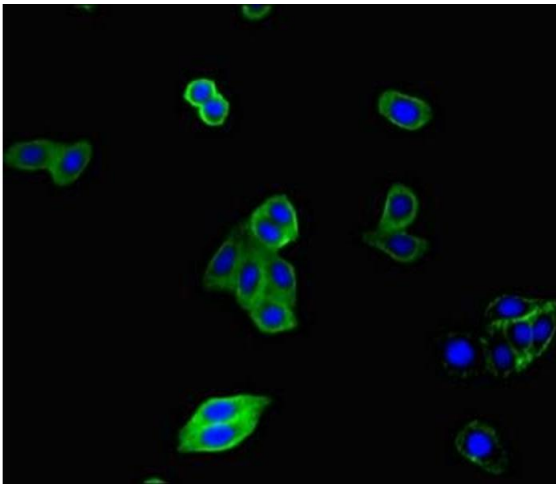
Storage: -20 °C,-80 °C

Storage Comment: Upon receipt, store at -20°C or -80°C. Avoid repeated freeze.



Immunohistochemistry

Image 1. Immunohistochemistry of paraffin-embedded human heart tissue using ABIN7148772 at dilution of 1:100



Immunofluorescence

Image 2. Immunofluorescent analysis of HepG2 cells using ABIN7148772 at dilution of 1:100 and Alexa Fluor 488-conjugated AffiniPure Goat Anti-Rabbit IgG(H+L)