

Datasheet for ABIN7148805
anti-ATF6 antibody (AA 1-194)[Go to Product page](#)

2 Images

Overview

Quantity:	100 µL
Target:	ATF6
Binding Specificity:	AA 1-194
Reactivity:	Human
Host:	Rabbit
Clonality:	Polyclonal
Conjugate:	This ATF6 antibody is un-conjugated
Application:	Immunohistochemistry (IHC), ELISA, Immunofluorescence (IF)

Product Details

Immunogen:	Recombinant Human Cyclic AMP-dependent transcription factor ATF-6 alpha protein (1-194AA)
Isotype:	IgG
Cross-Reactivity:	Human
Purification:	>95%, Antigen Affinity purified & Affinity purified

Target Details

Target:	ATF6
Alternative Name:	ATF6 (ATF6 Products)
Background:	Background: Transmembrane glycoprotein of the endoplasmic reticulum that functions as a transcription activator and initiates the unfolded protein response (UPR) during endoplasmic

Target Details

reticulum stress. Cleaved upon ER stress, the N-terminal processed cyclic AMP-dependent transcription factor ATF-6 alpha translocates to the nucleus where it activates transcription of genes involved in the UPR. Binds DNA on the 5'-CCAC[GA]-3' half of the ER stress response element (ERSE) (5'-CCAAT-N(9)-CCAC[GA]-3') and of ERSE II (5'-ATTGG-N-CCACG-3'). Binding to ERSE requires binding of NF-Y to ERSE. Could also be involved in activation of transcription by the serum response factor. May play a role in foveal development and cone function in the retina.

Aliases: Activating transcription factor 6 alpha antibody, Activating transcription factor 6 antibody, ATF 6 antibody, ATF6 alpha antibody, ATF6 antibody, ATF6-alpha antibody, ATF6A antibody, ATF6A_HUMAN antibody, cAMP dependent transcription factor ATF 6 alpha antibody, cAMP-dependent transcription factor ATF-6 alpha antibody, Cyclic AMP dependent transcription factor ATF 6 alpha antibody, DKFZp686P2194 antibody, ESTM49 antibody, FLJ21663 antibody, Processed cyclic AMP dependent transcription factor ATF 6 alpha antibody, Processed cyclic AMP-dependent transcription factor ATF-6 alpha antibody

UniProt: [P18850](#)

Pathways: [ER-Nucleus Signaling](#), [Unfolded Protein Response](#)

Application Details

Application Notes: Recommended dilution: IHC:1:100-1:500, IF:1:100-1:500,

Restrictions: For Research Use only

Handling

Format: Liquid

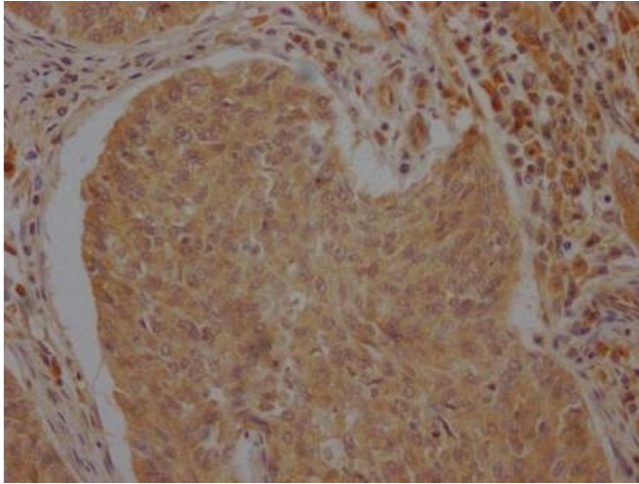
Buffer: Preservative: 0.03 % Proclin 300
Constituents: 50 % Glycerol, 0.01M PBS, PH 7.4

Preservative: ProClin

Precaution of Use: This product contains ProClin: a POISONOUS AND HAZARDOUS SUBSTANCE which should be handled by trained staff only.

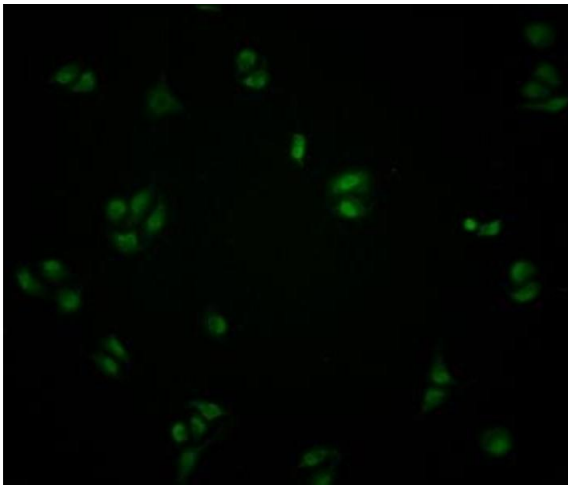
Storage: -20 °C, -80 °C

Storage Comment: Upon receipt, store at -20°C or -80°C. Avoid repeated freeze.



Immunohistochemistry

Image 1. IHC image of ABIN7148805 diluted at 1:100 and staining in paraffin-embedded human cervical cancer performed on a Leica Bond™ system. After dewaxing and hydration, antigen retrieval was mediated by high pressure in a citrate buffer (pH 6.0). Section was blocked with 10 % normal goat serum 30 min at RT. Then primary antibody (1 % BSA) was incubated at 4 °C overnight. The primary is detected by a Goat anti-rabbit polymer IgG labeled by HRP and visualized using 0.05 % DAB.



Immunofluorescence

Image 2. Immunofluorescence staining of HeLa cells with ABIN7148805 at 1:100, counter-stained with DAPI. The cells were fixed in 4 % formaldehyde and blocked in 10 % normal Goat Serum. The cells were then incubated with the antibody overnight at 4 °C. The secondary antibody was Alexa Fluor 488-conjugated AffiniPure Goat Anti-Rabbit IgG(H+L).