



[Go to Product page](#)

Datasheet for ABIN714881

anti-BCL2L10 antibody (AA 101-194)

1 Image

Overview

Quantity:	100 µL
Target:	BCL2L10
Binding Specificity:	AA 101-194
Reactivity:	Mouse, Rat
Host:	Rabbit
Clonality:	Polyclonal
Conjugate:	This BCL2L10 antibody is un-conjugated
Application:	ELISA, Immunofluorescence (Cultured Cells) (IF (cc)), Immunofluorescence (Paraffin-embedded Sections) (IF (p)), Immunohistochemistry (Paraffin-embedded Sections) (IHC (p)), Immunohistochemistry (Frozen Sections) (IHC (fro))

Product Details

Immunogen:	KLH conjugated synthetic peptide derived from human BCL2L10
Isotype:	IgG
Cross-Reactivity:	Mouse, Rat
Predicted Reactivity:	Human,Cow,Pig,Chicken,Rabbit
Purification:	Purified by Protein A.

Target Details

Target:	BCL2L10
---------	---------

Target Details

Alternative Name:	Bcl2l10 (BCL2L10 Products)
Background:	Synonyms: Boo, Diva, BCL-B, bcl2-L-10, Bcl-2-like protein 10, Anti-apoptotic protein NrH, Apoptosis regulator Bcl-B, BCL2L10, BCLB Background: Promotes cell survival. Suppresses apoptosis induced by BAX but not BAK.
Gene ID:	10017
UniProt:	Q9HD36
Pathways:	Positive Regulation of Endopeptidase Activity

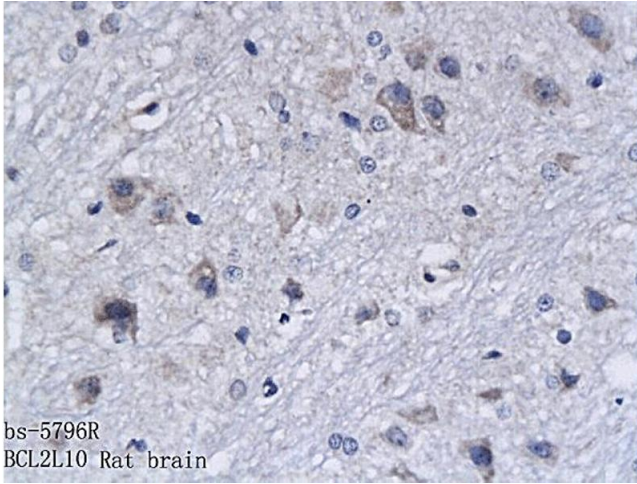
Application Details

Application Notes:	ELISA 1:500-1000 IHC-P 1:200-400 IHC-F 1:100-500 IF(IHC-P) 1:50-200 IF(IHC-F) 1:50-200 IF(ICC) 1:50-200
--------------------	------------------------------------------------------------------------------------------------------------------------

Restrictions:	For Research Use only
---------------	-----------------------

Handling

Format:	Liquid
Concentration:	1 µg/µL
Buffer:	0.01M TBS(pH 7.4) with 1 % BSA, 0.02 % Proclin300 and 50 % Glycerol.
Preservative:	ProClin
Precaution of Use:	This product contains ProClin: a POISONOUS AND HAZARDOUS SUBSTANCE, which should be handled by trained staff only.
Storage:	4 °C, -20 °C
Storage Comment:	Shipped at 4°C. Store at -20°C for one year. Avoid repeated freeze/thaw cycles.
Expiry Date:	12 months



Immunohistochemistry

Image 1. Formalin-fixed and paraffin embedded rat brain labeled with Anti-BCL2L10 Polyclonal Antibody, Unconjugated (ABIN714881) followed by conjugation to the secondary antibody and DAB staining