

Datasheet for ABIN7148816
anti-CREB3L1 antibody (AA 396-500)[Go to Product page](#)

4 Images

Overview

Quantity:	100 µg
Target:	CREB3L1
Binding Specificity:	AA 396-500
Reactivity:	Human
Host:	Rabbit
Clonality:	Polyclonal
Conjugate:	This CREB3L1 antibody is un-conjugated
Application:	Western Blotting (WB), ELISA, Immunohistochemistry (IHC), Immunofluorescence (IF)

Product Details

Immunogen:	Recombinant Human Cyclic AMP-responsive element-binding protein 3-like protein 1 protein (396-500AA)
Isotype:	IgG
Cross-Reactivity:	Human, Mouse, Rat
Purification:	>95%, Protein G purified

Target Details

Target:	CREB3L1
Alternative Name:	CREB3L1 (CREB3L1 Products)
Background:	Background: Transcription factor involved in unfolded protein response (UPR). In the absence

Target Details

of endoplasmic reticulum (ER) stress, inserted into ER membranes, with N-terminal DNA-binding and transcription activation domains oriented toward the cytosolic face of the membrane. In response to ER stress, transported to the Golgi, where it is cleaved in a site-specific manner by resident proteases S1P/MBTPS1 and S2P/MBTPS2. The released N-terminal cytosolic domain is translocated to the nucleus to effect transcription of specific target genes. Plays a critical role in bone formation through the transcription of COL1A1, and possibly COL1A2, and the secretion of bone matrix proteins. Directly binds to the UPR element (UPRE)-like sequence in an osteoblast-specific COL1A1 promoter region and induces its transcription. Does not regulate COL1A1 in other tissues, such as skin (By similarity). Required to protect astrocytes from ER stress-induced cell death. In astrocytes, binds to the cAMP response element (CRE) of the BiP/HSPA5 promoter and participate in its transcriptional activation (By similarity). May play a role in limiting virus spread by inhibiting proliferation of virus-infected cells. Upon infection with diverse DNA and RNA viruses, inhibits cell-cycle progression by binding to promoters and activating transcription of genes encoding cell-cycle inhibitors, such as p21/CDKN1A (PubMed:21767813). Binds the DNA consensus sequence 5\\\'-GTGXGCXGC-3\\\' (PubMed:21767813).

Aliases: BBF-2 homolog antibody, CAMP responsive element binding protein 3 like 1 antibody, cAMP-responsive element-binding protein 3-like protein 1 antibody, CR3L1_HUMAN antibody, Creb3l1 antibody, Cyclic AMP responsive element binding protein 3 like protein 1 antibody, OASIS antibody, Old astrocyte specifically-induced substance antibody, Processed cyclic AMP-responsive element-binding protein 3-like protein 1 antibody

UniProt: [Q96BA8](#)

Pathways: [Thyroid Hormone Synthesis](#), [Chromatin Binding](#)

Application Details

Application Notes: Recommended dilution: WB:1:200-1:5000, IHC:1:20-1:200, IF:1:50-1:200,

Restrictions: For Research Use only

Handling

Format: Liquid

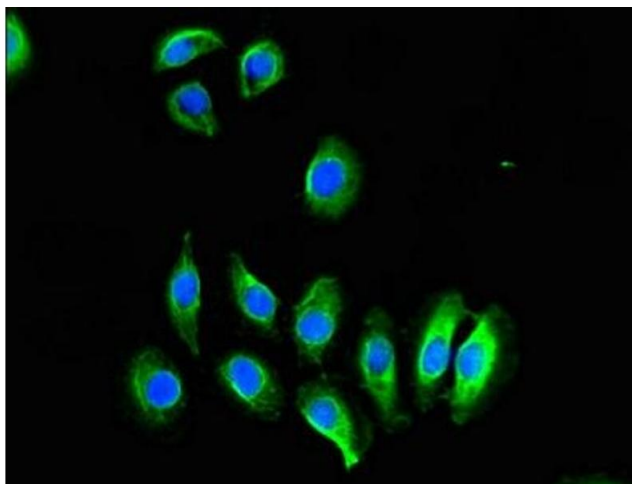
Buffer: Preservative: 0.03 % Proclin 300
Constituents: 50 % Glycerol, 0.01M PBS, pH 7.4

Preservative: ProClin

Handling

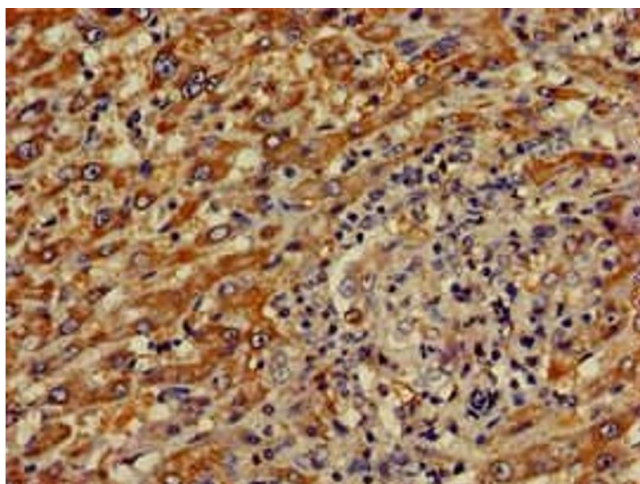
Precaution of Use:	This product contains ProClin: a POISONOUS AND HAZARDOUS SUBSTANCE which should be handled by trained staff only.
Storage:	-20 °C, -80 °C
Storage Comment:	Upon receipt, store at -20°C or -80°C. Avoid repeated freeze.

Images



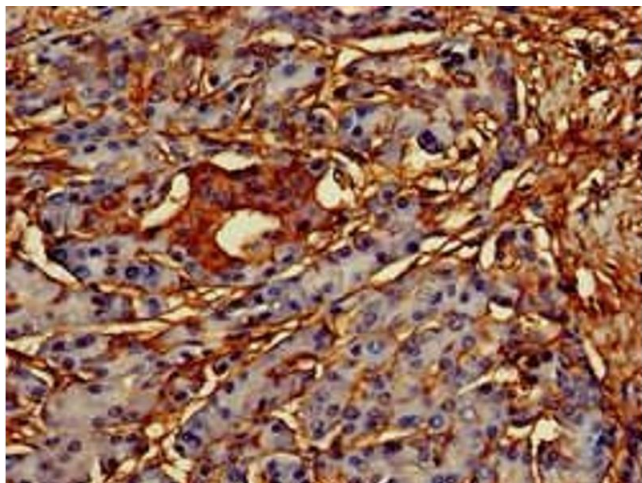
Immunofluorescence

Image 1. Immunofluorescent analysis of A549 cells using ABIN7148816 at dilution of 1:100 and Alexa Fluor 488-conjugated AffiniPure Goat Anti-Rabbit IgG(H+L)



Immunohistochemistry

Image 2. Immunohistochemistry of paraffin-embedded human liver cancer using ABIN7148816 at dilution of 1:100



Immunohistochemistry

Image 3. Immunohistochemistry of paraffin-embedded human pancreatic tissue using ABIN7148816 at dilution of 1:100

Please check the [product details page](#) for more images. Overall 4 images are available for ABIN7148816.