

Datasheet for ABIN7148820  
**anti-CREB3L2 antibody (AA 1-247)**[Go to Product page](#)

## 4 Images

## Overview

Quantity:	100 µL
Target:	CREB3L2
Binding Specificity:	AA 1-247
Reactivity:	Human
Host:	Rabbit
Clonality:	Polyclonal
Conjugate:	This CREB3L2 antibody is un-conjugated
Application:	Western Blotting (WB), ELISA, Immunohistochemistry (IHC), Immunofluorescence (IF)

## Product Details

Immunogen:	Recombinant Human Cyclic AMP-responsive element-binding protein 3-like protein 2 protein (1-247AA)
Isotype:	IgG
Cross-Reactivity:	Human, Mouse
Purification:	Antigen Affinity Purified

## Target Details

Target:	CREB3L2
Alternative Name:	CREB3L2 ( <a href="#">CREB3L2 Products</a> )
Background:	Background: Transcriptional activator which is processed and activated during endoplasmic

## Target Details

reticulum stress late phase. Binds to the cAMP response element (CRE) and activates transcription through CRE. Regulates the transcription of unfolded protein response target genes, preventing accumulation of unfolded proteins in damaged neurons. Also regulates the expression of SEC23A, accelerating protein trafficking from the ER to the Golgi thereby playing a key role in chondrocyte differentiation and formation of epiphyseal cartilage (By similarity).  
Aliases: B ZIB transcription factor antibody, Basic transcription factor 2 antibody, BBF2 human homolog on chromosome 7 antibody, BBF2H7 antibody, BZIB transcription factor antibody, cAMP responsive element binding protein 3 like 2 antibody, cAMP-responsive element-binding protein 3-like protein 2 antibody, CR3L2\_HUMAN antibody, Creb3l2 antibody, Cyclic AMP-responsive element-binding protein 3-like protein 2 antibody, FUS/BBF2H7 protein antibody, MGC131709 antibody, MGC71006 antibody, Processed cyclic AMP-responsive element-binding protein 3-like protein 2 antibody, TCAG\_1951439 antibody

UniProt: [Q70SY1](#)

Pathways: [Thyroid Hormone Synthesis](#)

## Application Details

Application Notes: Recommended dilution: WB:1:200-1:1000, IHC:1:20-1:200, IF:1:50-1:200,

Restrictions: For Research Use only

## Handling

Format: Liquid

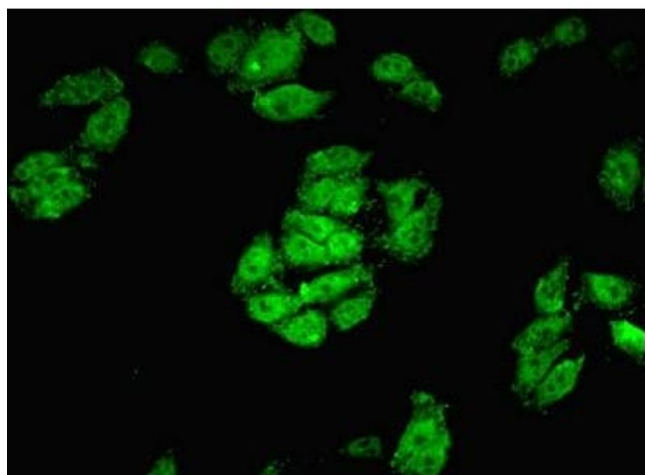
Buffer: PBS with 0.02 % sodium azide, 50 % glycerol, pH 7.3.

Preservative: Sodium azide

Precaution of Use: This product contains Sodium azide: a POISONOUS AND HAZARDOUS SUBSTANCE which should be handled by trained staff only.

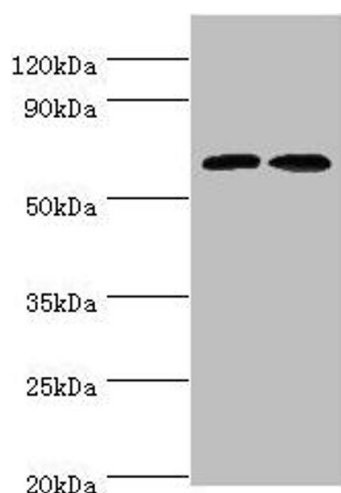
Storage: -20 °C,-80 °C

Storage Comment: Upon receipt, store at -20°C or -80°C. Avoid repeated freeze.



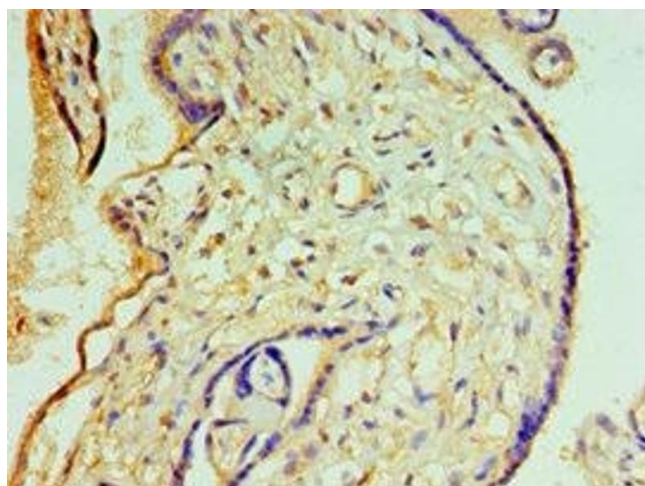
#### Immunofluorescence

**Image 1.** Immunofluorescent analysis of HepG2 cells using ABIN7148820 at dilution of 1:100 and Alexa Fluor 488-conjugated AffiniPure Goat Anti-Rabbit IgG(H+L)



#### Western Blotting

**Image 2.** Western blot All lanes: CREB3L2 antibody at 6  $\mu$ g/mL Lane 1: Mouse liver tissue Lane 2: Mouse lung tissue Secondary Goat polyclonal to rabbit IgG at 1/10000 dilution Predicted band size: 58, 51, 28 kDa Observed band size: 58 kDa



#### Immunohistochemistry

**Image 3.** Immunohistochemistry of paraffin-embedded human placenta tissue using ABIN7148820 at dilution of 1:100

Please check the [product details page](#) for more images. Overall 4 images are available for ABIN7148820.