

Datasheet for ABIN7148847

**anti-Cyclin-Dependent Kinase 11A (CDK11A) (AA 5-216)  
antibody**[Go to Product page](#)**3** Images

## Overview

Quantity:	100 µg
Target:	Cyclin-Dependent Kinase 11A (CDK11A)
Binding Specificity:	AA 5-216
Reactivity:	Human
Host:	Rabbit
Clonality:	Polyclonal
Conjugate:	Un-conjugated
Application:	ELISA, Western Blotting (WB), Immunohistochemistry (IHC), Immunofluorescence (IF)

## Product Details

Immunogen:	Recombinant Human Cyclin-dependent kinase 11A protein (5-216AA)
Isotype:	IgG
Cross-Reactivity:	Human, Rat
Purification:	>95%, Protein G purified

## Target Details

Target:	Cyclin-Dependent Kinase 11A (CDK11A)
Alternative Name:	CDK11A ( <a href="#">CDK11A Products</a> )
Background:	CD11A_HUMAN antibody, CDC2L2 antibody, CDC2L3 antibody, CDK11 antibody, CDK11 p110 antibody, CDK11 p46 antibody, CDK11 p58 antibody, CDK11A antibody, Cell division cycle 2 like

## Target Details

2 (PITSLRE proteins) antibody, Cell division cycle 2-like protein kinase 2 antibody, Cell division protein kinase 11A antibody, Cyclin-dependent kinase 11A antibody, Galactosyltransferase-associated protein kinase p58/GTA antibody, p58GTA antibody, PITSLRE antibody, PITSLRE B antibody, PITSLRE protein kinase beta antibody, PITSLRE serine/threonine-protein kinase CDC2L2 antibody, PITSLREB antibody

UniProt: [Q9UQ88](#)

Pathways: [M Phase](#)

## Application Details

Application Notes: Recommended dilution: WB:1:500-1:5000, IHC:1:500-1:1000, IF:1:50-1:200,

Restrictions: For Research Use only

## Handling

Format: Liquid

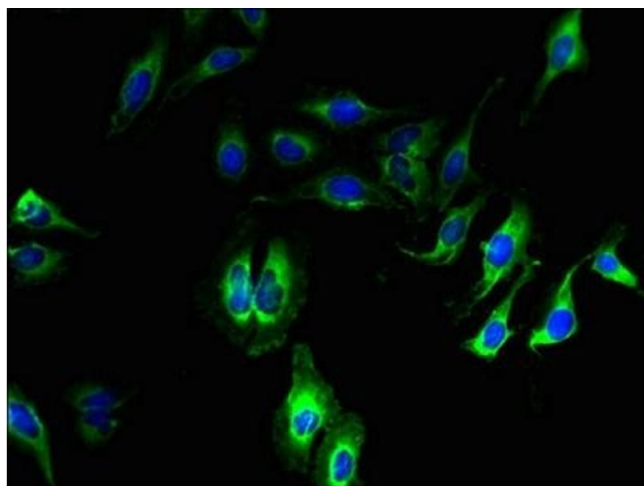
Buffer: Preservative: 0.03 % Proclin 300  
Constituents: 50 % Glycerol, 0.01M PBS, PH 7.4

Preservative: ProClin

Precaution of Use: This product contains ProClin: a POISONOUS AND HAZARDOUS SUBSTANCE which should be handled by trained staff only.

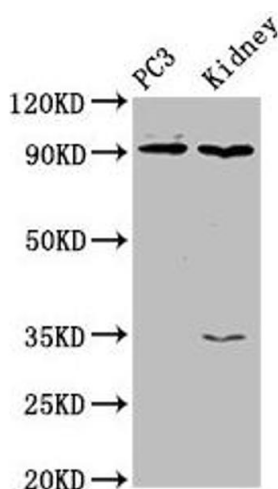
Storage: -20 °C,-80 °C

Storage Comment: Upon receipt, store at -20°C or -80°C. Avoid repeated freeze.



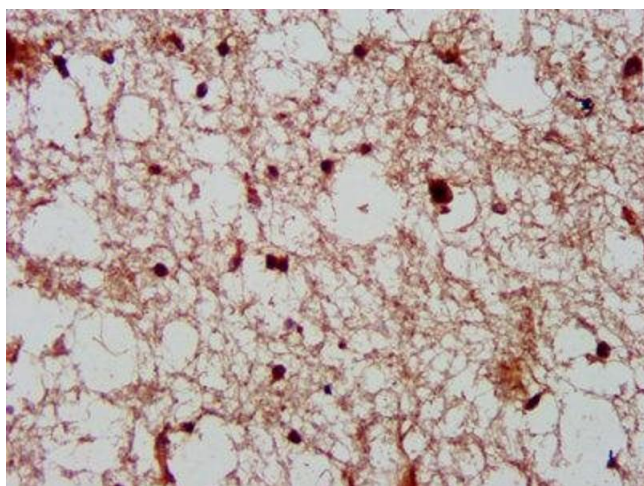
### Immunofluorescence

**Image 1.** Immunofluorescent analysis of HeLa cells using ABIN7148847 at dilution of 1:100 and Alexa Fluor 488-conjugated AffiniPure Goat Anti-Rabbit IgG(H+L)



### Western Blotting

**Image 2.** Western Blot Positive WB detected in: PC-3 whole cell lysate, Rat kidney tissue All lanes: CDK11A antibody at 4 µg/mL Secondary Goat polyclonal to rabbit IgG at 1/50000 dilution Predicted band size: 92, 91, 46, 19, 63, 50 kDa Observed band size: 92 kDa



### Immunohistochemistry

**Image 3.** IHC image of ABIN7148847 diluted at 1:600 and staining in paraffin-embedded human brain tissue performed on a Leica Bond™ system. After dewaxing and hydration, antigen retrieval was mediated by high pressure in a citrate buffer (pH 6.0). Section was blocked with 10% normal goat serum 30min at RT. Then primary antibody (1% BSA) was incubated at 4°C overnight. The primary is detected by a biotinylated secondary antibody and visualized using an HRP conjugated SP system.