

Datasheet for ABIN7148855
anti-CDK13 antibody (AA 1-170)[Go to Product page](#)

1 Image

Overview

Quantity:	100 µg
Target:	CDK13
Binding Specificity:	AA 1-170
Reactivity:	Human
Host:	Rabbit
Clonality:	Polyclonal
Conjugate:	This CDK13 antibody is un-conjugated
Application:	ELISA, Immunohistochemistry (IHC)

Product Details

Immunogen:	Recombinant Human Cyclin-dependent kinase 13 protein (1-170AA)
Isotype:	IgG
Cross-Reactivity:	Human
Purification:	>95%, Protein G purified

Target Details

Target:	CDK13
Alternative Name:	CDK13 (CDK13 Products)
Background:	Background: Cyclin-dependent kinase which displays CTD kinase activity and is required for RNA splicing. Has CTD kinase activity by hyperphosphorylating the C-terminal heptapeptide

Target Details

repeat domain (CTD) of the largest RNA polymerase II subunit RPB1, thereby acting as a key regulator of transcription elongation. Required for RNA splicing, probably by phosphorylating SRSF1/SF2. Required during hematopoiesis. In case of infection by HIV-1 virus, interacts with HIV-1 Tat protein acetylated at 'Lys-50' and 'Lys-51', thereby increasing HIV-1 mRNA splicing and promoting the production of the doubly spliced HIV-1 protein Nef.

Aliases: CDC2 related protein kinase 5 antibody, CDC2-related protein kinase 5 antibody, CDC2L antibody, CDK13 antibody, CDK13_HUMAN antibody, cell division controller cholinesterase related antibody, cell division cycle 2 like 5 (cholinesterase related cell division controller) antibody, cell division cycle 2 like 5 antibody, Cell division cycle 2 like protein kinase 5 antibody, Cell division cycle 2-like protein kinase 5 antibody, Cell division protein kinase 13 antibody, CHED antibody, Cholinesterase related cell division controller antibody, Cholinesterase-related cell division controller antibody, cyclin dependent kinase 13 antibody, Cyclin-dependent kinase 13 antibody, hCDK13 antibody

UniProt: [Q14004](#)

Application Details

Application Notes: Recommended dilution: IHC:1:20-1:200,

Restrictions: For Research Use only

Handling

Format: Liquid

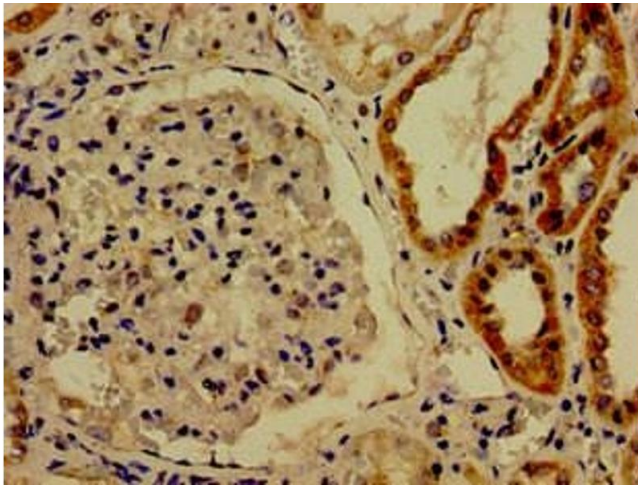
Buffer: Preservative: 0.03 % Proclin 300
Constituents: 50 % Glycerol, 0.01M PBS, pH 7.4

Preservative: ProClin

Precaution of Use: This product contains ProClin: a POISONOUS AND HAZARDOUS SUBSTANCE which should be handled by trained staff only.

Storage: -20 °C,-80 °C

Storage Comment: Upon receipt, store at -20°C or -80°C. Avoid repeated freeze.



Immunohistochemistry

Image 1. Immunohistochemistry of paraffin-embedded human kidney tissue using ABIN7148855 at dilution of 1:100