

Datasheet for ABIN7148898  
**anti-CDK6 antibody (AA 102-326)**



[Go to Product page](#)

2 Images

## Overview

Quantity:	100 µL
Target:	CDK6
Binding Specificity:	AA 102-326
Reactivity:	Human
Host:	Rabbit
Clonality:	Polyclonal
Conjugate:	This CDK6 antibody is un-conjugated
Application:	Immunohistochemistry (IHC), Immunofluorescence (IF), ELISA

## Product Details

Immunogen:	Recombinant Human Cyclin-dependent kinase 6 protein (102-326AA)
Isotype:	IgG
Cross-Reactivity:	Human
Purification:	>95%, Protein G purified

## Target Details

Target:	CDK6
Alternative Name:	CDK6 ( <a href="#">CDK6 Products</a> )
Background:	Background: Serine/threonine-protein kinase involved in the control of the cell cycle and differentiation, promotes G1/S transition. Phosphorylates pRB/RB1 and NPM1. Interacts with

## Target Details

D-type G1 cyclins during interphase at G1 to form a pRB/RB1 kinase and controls the entrance into the cell cycle. Involved in initiation and maintenance of cell cycle exit during cell differentiation, prevents cell proliferation and regulates negatively cell differentiation, but is required for the proliferation of specific cell types (e.g. erythroid and hematopoietic cells). Essential for cell proliferation within the dentate gyrus of the hippocampus and the subventricular zone of the lateral ventricles. Required during thymocyte development. Promotes the production of newborn neurons, probably by modulating G1 length. Promotes, at least in astrocytes, changes in patterns of gene expression, changes in the actin cytoskeleton including loss of stress fibers, and enhanced motility during cell differentiation. Prevents myeloid differentiation by interfering with RUNX1 and reducing its transcription transactivation activity, but promotes proliferation of normal myeloid progenitors. Delays senescence. Promotes the proliferation of beta-cells in pancreatic islets of Langerhans. May play a role in the centrosome organization during the cell cycle phases (PubMed:23918663). Aliases: CDK 6 antibody, CDK6 antibody, CDK6\_HUMAN antibody, Cell division protein kinase 6 antibody, Crk 2 antibody, Crk2 antibody, Cyclin dependent kinase 6 antibody, Cyclin-dependent kinase 6 antibody, MCPH12 antibody, MGC59692 antibody, p40 antibody, PLSTIRE antibody, Serine/threonine protein kinase PLSTIRE antibody, Serine/threonine-protein kinase PLSTIRE antibody, STQTL11 antibody

UniProt: [Q00534](#)

Pathways: [Cell Division Cycle, Mitotic G1-G1/S Phases](#)

## Application Details

Application Notes: Recommended dilution: IHC:1:200-1:500, IF:1:100-1:500,

Restrictions: For Research Use only

## Handling

Format: Liquid

Buffer: Preservative: 0.03 % Proclin 300  
Constituents: 50 % Glycerol, 0.01M PBS, PH 7.4

Preservative: ProClin

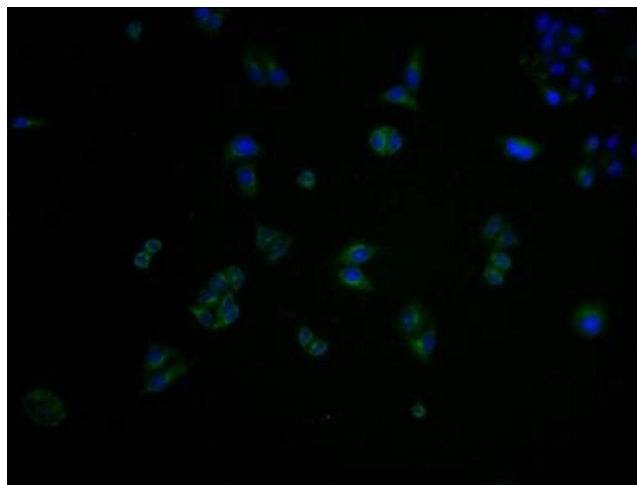
Precaution of Use: This product contains ProClin: a POISONOUS AND HAZARDOUS SUBSTANCE which should be handled by trained staff only.

## Handling

Storage: -20 °C, -80 °C

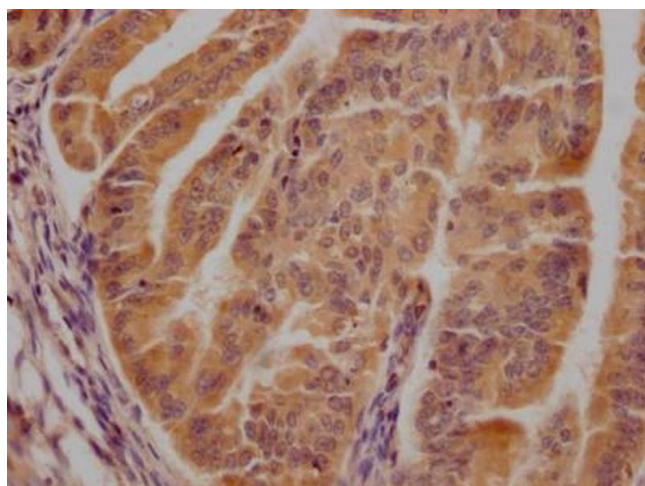
Storage Comment: Upon receipt, store at -20°C or -80°C. Avoid repeated freeze.

## Images



### Immunofluorescence

**Image 1.** Immunofluorescence staining of HeLa cells with ABIN7148898 at 1:100, counter-stained with DAPI. The cells were fixed in 4 % formaldehyde and blocked in 10 % normal Goat Serum. The cells were then incubated with the antibody overnight at 4 °C. The secondary antibody was Alexa Fluor 488-conjugated AffiniPure Goat Anti-Rabbit IgG(H+L).



### Immunohistochemistry

**Image 2.** IHC image of ABIN7148898 diluted at 1:300 and staining in paraffin-embedded human endometrial cancer performed on a Leica Bond™ system. After dewaxing and hydration, antigen retrieval was mediated by high pressure in a citrate buffer (pH 6.0). Section was blocked with 10 % normal goat serum 30 min at RT. Then primary antibody (1 % BSA) was incubated at 4 °C overnight. The primary is detected by a Goat anti-rabbit polymer IgG labeled by HRP and visualized using 0.05 % DAB.