



[Go to Product page](#)

Datasheet for ABIN7148927

anti-CKS2 antibody (Regulatory Subunit 2)

1 Image

Overview

Quantity:	100 µg
Target:	CKS2
Binding Specificity:	AA 2-79, Regulatory Subunit 2
Reactivity:	Human
Host:	Rabbit
Clonality:	Polyclonal
Conjugate:	This CKS2 antibody is un-conjugated
Application:	ELISA, Immunohistochemistry (IHC)

Product Details

Immunogen:	Recombinant Human Cyclin-dependent kinases regulatory subunit 2 protein (2-79AA)
Isotype:	IgG
Cross-Reactivity:	Human
Purification:	Antigen Affinity Purified

Target Details

Target:	CKS2
Alternative Name:	CKS2 (CKS2 Products)
Background:	Background: Binds to the catalytic subunit of the cyclin dependent kinases and is essential for their biological function.

Target Details

Aliases: CDC28 antibody, CDC28 protein kinase 2 antibody, CDC28 protein kinase regulatory subunit 2 antibody, CKS 2 antibody, CKS-2 antibody, CKS1(S. cerevisiae Cdc28/Cdc2 kinase subunit) homolog 2 antibody, Cks2 antibody, CKS2_HUMAN antibody, CKSHS2 antibody, Cyclin dependent kinases regulatory subunit 2 antibody, Cyclin-dependent kinases regulatory subunit 2 antibody

UniProt: [P33552](#)

Application Details

Application Notes: Recommended dilution: IHC:1:20-1:200,

Restrictions: For Research Use only

Handling

Format: Liquid

Buffer: Preservative: 0.03 % Proclin 300
Constituents: 50 % Glycerol, 0.01M PBS, PH 7.4

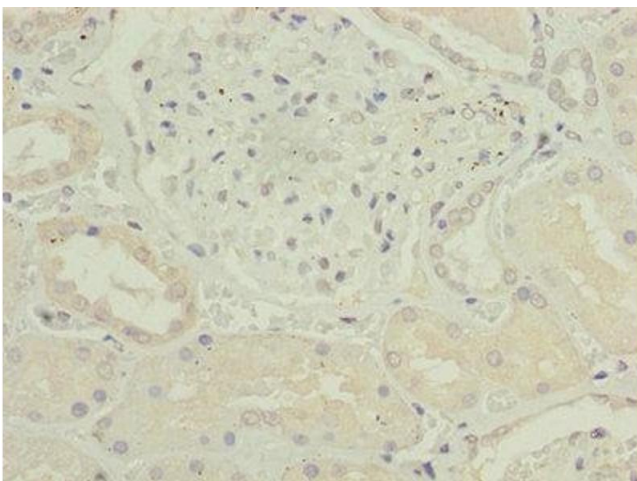
Preservative: ProClin

Precaution of Use: This product contains ProClin: a POISONOUS AND HAZARDOUS SUBSTANCE which should be handled by trained staff only.

Storage: -20 °C,-80 °C

Storage Comment: Upon receipt, store at -20°C or -80°C. Avoid repeated freeze.

Images



Immunohistochemistry

Image 1. Immunohistochemistry of paraffin-embedded human kidney tissue using ABIN7148927 at dilution of 1:100