



[Go to Product page](#)

Datasheet for ABIN7148943
anti-CCNJL antibody (AA 315-435)

3 Images

Overview

Quantity:	100 µg
Target:	CCNJL
Binding Specificity:	AA 315-435
Reactivity:	Human
Host:	Rabbit
Clonality:	Polyclonal
Conjugate:	This CCNJL antibody is un-conjugated
Application:	Western Blotting (WB), ELISA, Immunohistochemistry (IHC)

Product Details

Immunogen:	Recombinant Human Cyclin-J-like protein (315-435AA)
Isotype:	IgG
Cross-Reactivity:	Human, Mouse
Purification:	>95%, Protein G purified

Target Details

Target:	CCNJL
Alternative Name:	CCNJL (CCNJL Products)
Background:	CCNJLCyclin-J-like protein antibody
UniProt:	Q8IV13

Application Details

Application Notes: Recommended dilution: WB:1:500-1:2000, IHC:1:20-1:200,

Restrictions: For Research Use only

Handling

Format: Liquid

Buffer: Preservative: 0.03 % Proclin 300
Constituents: 50 % Glycerol, 0.01M PBS, PH 7.4

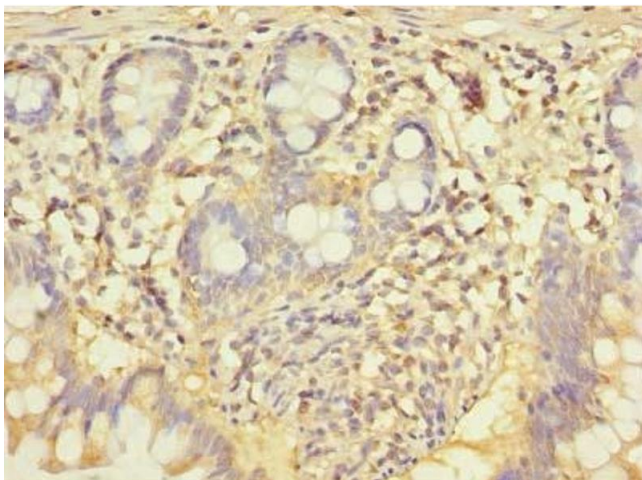
Preservative: ProClin

Precaution of Use: This product contains ProClin: a POISONOUS AND HAZARDOUS SUBSTANCE which should be handled by trained staff only.

Storage: -20 °C,-80 °C

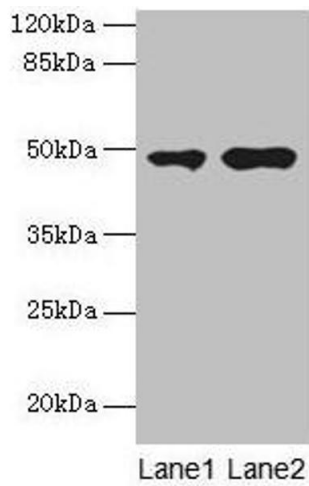
Storage Comment: Upon receipt, store at -20°C or -80°C. Avoid repeated freeze.

Images



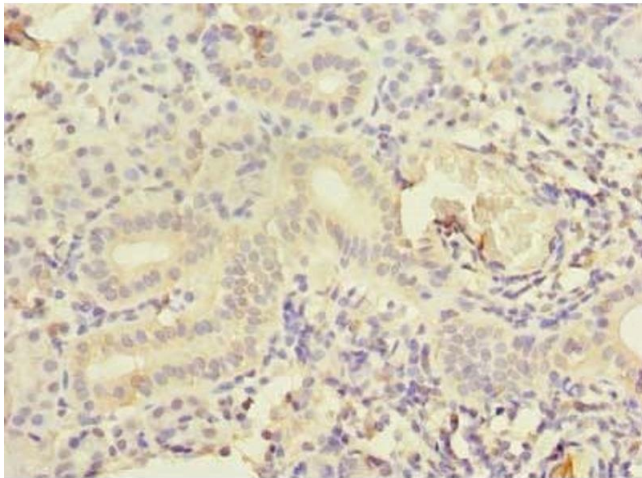
Immunohistochemistry

Image 1. Immunohistochemistry of paraffin-embedded human small intestine tissue using ABIN7148943 at dilution of 1:100



Western Blotting

Image 2. Western blot All lanes: CCNJL antibody at 3 µg/mL
Lane 1: U251 whole cell lysate Lane 2: Mouse liver tissue
Secondary Goat polyclonal to rabbit IgG at 1/10000 dilution
Predicted band size: 49, 19 kDa Observed band size: 49 kDa



Immunohistochemistry

Image 3. Immunohistochemistry of paraffin-embedded human pancreatic tissue using ABIN7148943 at dilution of 1:100