

Datasheet for ABIN7148955  
**anti-Cyclin Y antibody (AA 2-170)**

## 3 Images

[Go to Product page](#)

## Overview

Quantity:	100 µg
Target:	Cyclin Y (CCNY)
Binding Specificity:	AA 2-170
Reactivity:	Human
Host:	Rabbit
Clonality:	Polyclonal
Conjugate:	This Cyclin Y antibody is un-conjugated
Application:	Western Blotting (WB), ELISA, Immunofluorescence (IF), Immunohistochemistry (IHC)

## Product Details

Immunogen:	Recombinant Human Cyclin-Y protein (2-170AA)
Isotype:	IgG
Cross-Reactivity:	Human
Purification:	>95%, Protein G purified

## Target Details

Target:	Cyclin Y (CCNY)
Alternative Name:	CCNY ( <a href="#">CCNY Products</a> )
Background:	Background: Positive regulatory subunit of the cyclin-dependent kinases CDK14/PFTK1 and CDK16. Acts as a cell-cycle regulator of Wnt signaling pathway during G2/M phase by recruiting

## Target Details

CDK14/PFTK1 to the plasma membrane and promoting phosphorylation of LRP6, leading to the activation of the Wnt signaling pathway. Recruits CDK16 to the plasma membrane. Isoform 3 might play a role in the activation of MYC-mediated transcription.

Aliases: CCNY antibody, C10orf9 antibody, CBCP1 antibody, CFP1Cyclin-Y antibody, Cyc-Y antibody, Cyclin box protein 1 antibody, Cyclin fold protein 1 antibody, cyclin-X antibody

UniProt: [Q8ND76](#)

## Application Details

Application Notes: Recommended dilution: WB:1:500-1:5000, IHC:1:500-1:1000, IF:1:200-1:500,

Restrictions: For Research Use only

## Handling

Format: Liquid

Buffer: Preservative: 0.03 % Proclin 300  
Constituents: 50 % Glycerol, 0.01M PBS, pH 7.4

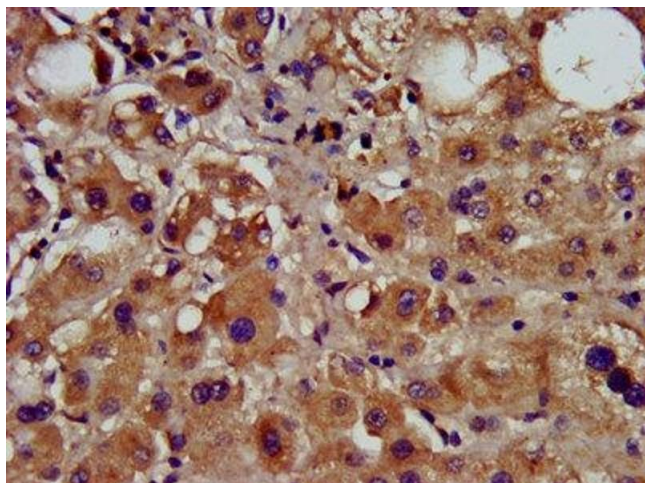
Preservative: ProClin

Precaution of Use: This product contains ProClin: a POISONOUS AND HAZARDOUS SUBSTANCE which should be handled by trained staff only.

Storage: -20 °C,-80 °C

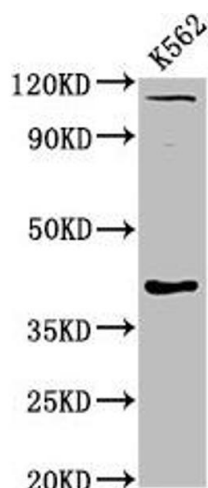
Storage Comment: Upon receipt, store at -20°C or -80°C. Avoid repeated freeze.

## Images



### Immunohistochemistry

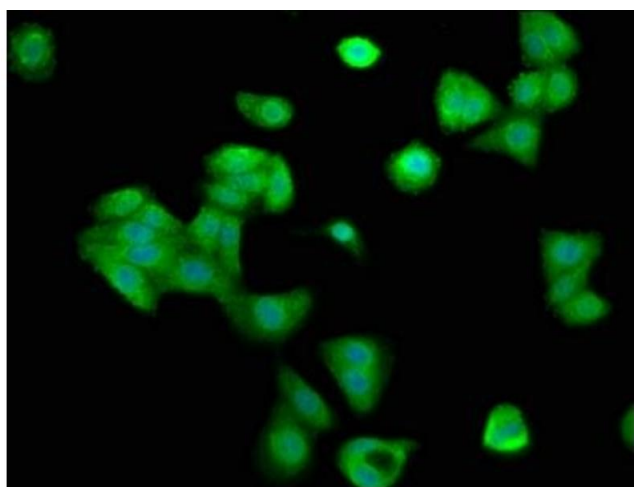
**Image 1.** IHC image of ABIN7148955 diluted at 1:600 and staining in paraffin-embedded human liver tissue performed on a Leica Bond™ system. After dewaxing and hydration, antigen retrieval was mediated by high pressure in a citrate buffer (pH 6.0). Section was blocked with 10% normal goat serum 30min at RT. Then primary antibody (1% BSA) was incubated at 4°C overnight. The primary is detected by a biotinylated secondary antibody and visualized using an



HRP conjugated SP system.

### Western Blotting

**Image 2.** Western Blot Positive WB detected in: K562 whole cell lysate All lanes: CCNY antibody at 6 µg/mL Secondary Goat polyclonal to rabbit IgG at 1/50000 dilution Predicted band size: 40, 37, 34 kDa Observed band size: 40 kDa



### Immunofluorescence

**Image 3.** Immunofluorescence staining of HepG2 cells with ABIN7148955 at 1:200, counter-stained with DAPI. The cells were fixed in 4% formaldehyde, permeabilized using 0.2% Triton X-100 and blocked in 10% normal Goat Serum. The cells were then incubated with the antibody overnight at 4°C. The secondary antibody was Alexa Fluor 488-conjugated AffiniPure Goat Anti-Rabbit IgG(H+L).