

Datasheet for ABIN7148999
anti-CST5 antibody (AA 21-142)[Go to Product page](#)

1 Image

Overview

Quantity:	100 µL
Target:	CST5
Binding Specificity:	AA 21-142
Reactivity:	Human
Host:	Rabbit
Clonality:	Polyclonal
Conjugate:	This CST5 antibody is un-conjugated
Application:	Immunohistochemistry (IHC), ELISA

Product Details

Immunogen:	Recombinant Human Cystatin-D protein (21-142AA)
Isotype:	IgG
Cross-Reactivity:	Human
Purification:	>95%, Protein G purified

Target Details

Target:	CST5
Alternative Name:	CST5 (CST5 Products)
Background:	Background: Cysteine proteinase inhibitor that possibly plays a protective role against proteinases present in the oral cavity. The order of preference for inhibition is cathepsin S >

Target Details

cathepsin H > cathepsin L > cathepsin B.

Aliases: CST 5 antibody, CST5 antibody, Cystatin 5 antibody, Cystatin-5 antibody, Cystatin-D antibody, CystatinD antibody, Cysteine proteinase inhibitor antibody, CYTD_HUMAN antibody, MGC71922 antibody

UniProt: [P28325](#)

Application Details

Application Notes: Recommended dilution: IHC:1:500-1:1000,

Restrictions: For Research Use only

Handling

Format: Liquid

Buffer: Preservative: 0.03 % Proclin 300
Constituents: 50 % Glycerol, 0.01M PBS, pH 7.4

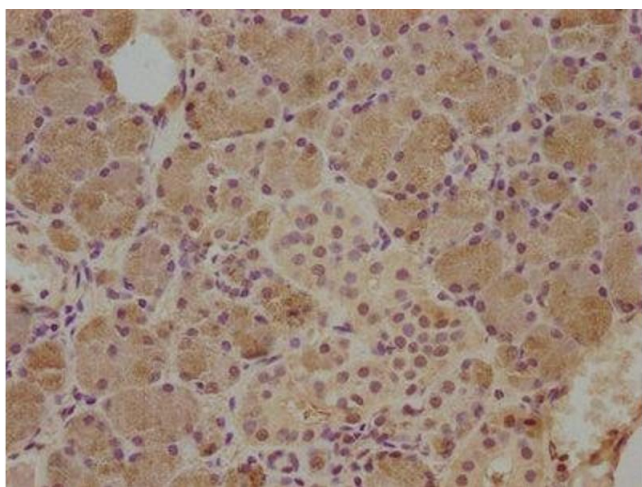
Preservative: ProClin

Precaution of Use: This product contains ProClin: a POISONOUS AND HAZARDOUS SUBSTANCE which should be handled by trained staff only.

Storage: -20 °C, -80 °C

Storage Comment: Upon receipt, store at -20°C or -80°C. Avoid repeated freeze.

Images



Immunohistochemistry

Image 1. IHC image of ABIN7148999 diluted at 1:500 and staining in paraffin-embedded human salivary gland tissue performed on a Leica Bond™ system. After dewaxing and hydration, antigen retrieval was mediated by high pressure in a citrate buffer (pH 6.0). Section was blocked with 10 % normal goat serum 30 min at RT. Then primary antibody (1 % BSA) was incubated at 4 °C overnight. The primary is detected by a biotinylated secondary antibody and visualized using an HRP conjugated SP system.