

Datasheet for ABIN7149009  
**anti-CSRP2 antibody (AA 2-193)**[Go to Product page](#)

## 1 Image

## Overview

Quantity:	100 µg
Target:	CSRP2
Binding Specificity:	AA 2-193
Reactivity:	Human
Host:	Rabbit
Clonality:	Polyclonal
Conjugate:	This CSRP2 antibody is un-conjugated
Application:	ELISA, Immunohistochemistry (IHC)

## Product Details

Immunogen:	Recombinant Human Cysteine and glycine-rich protein 2 protein (2-193AA)
Isotype:	IgG
Cross-Reactivity:	Human
Purification:	>95%, Protein G purified

## Target Details

Target:	CSRP2
Alternative Name:	CSRP2 ( <a href="#">CSRP2 Products</a> )
Background:	Background: Drastically down-regulated in response to PDGF-BB or cell injury, that promote smooth muscle cell proliferation and dedifferentiation. Seems to play a role in the development



## Target Details

of the embryonic vascular system.

Aliases: CRP2 antibody, CSRP2 antibody, CSRP2\_HUMAN antibody, Cysteine and glycine rich protein 2 antibody, Cysteine and glycine-rich protein 2 antibody, Cysteine rich protein 2 antibody, Cysteine-rich protein 2 antibody, LIM domain only protein 5 antibody, LMO-5 antibody, LM05 antibody, SmLIM antibody, Smooth muscle cell LIM protein antibody

UniProt: [Q16527](#)

## Application Details

Application Notes: Recommended dilution: IHC:1:20-1:200,

Restrictions: For Research Use only

## Handling

Format: Liquid

Buffer: Preservative: 0.03 % Proclin 300  
Constituents: 50 % Glycerol, 0.01M PBS, PH 7.4

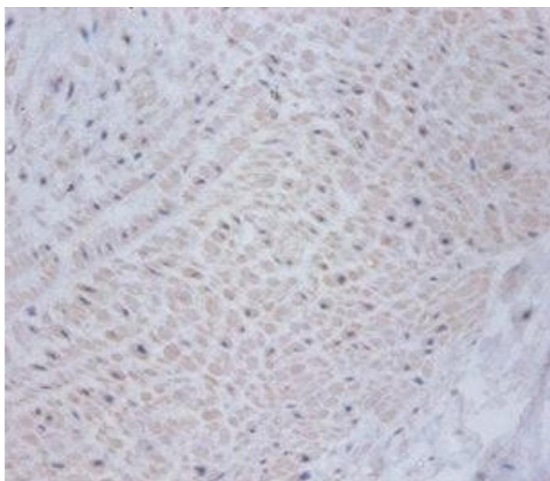
Preservative: ProClin

Precaution of Use: This product contains ProClin: a POISONOUS AND HAZARDOUS SUBSTANCE which should be handled by trained staff only.

Storage: -20 °C,-80 °C

Storage Comment: Upon receipt, store at -20°C or -80°C. Avoid repeated freeze.

## Images



### Immunohistochemistry

**Image 1.** Immunohistochemistry of paraffin-embedded human umbilical cord tissue using ABIN7149009 at dilution of 1:100