

Datasheet for ABIN7149013
anti-CSRP3 antibody (AA 1-194)[Go to Product page](#)

2 Images

Overview

| | |
|----------------------|--------------------------------------|
| Quantity: | 100 µL |
| Target: | CSRP3 |
| Binding Specificity: | AA 1-194 |
| Reactivity: | Human |
| Host: | Rabbit |
| Clonality: | Polyclonal |
| Conjugate: | This CSRP3 antibody is un-conjugated |
| Application: | ELISA, Immunohistochemistry (IHC) |

Product Details

| | |
|-------------------|---|
| Immunogen: | Recombinant Human Cysteine and glycine-rich protein 3 protein (1-194AA) |
| Isotype: | IgG |
| Cross-Reactivity: | Human |
| Purification: | Antigen Affinity Purified |

Target Details

| | |
|-------------------|--|
| Target: | CSRP3 |
| Alternative Name: | CSRP3 (CSRP3 Products) |
| Background: | Background: Positive regulator of myogenesis. Plays a crucial and specific role in the organization of cytosolic structures in cardiomyocytes. Could play a role in mechanical stretch |

Target Details

sensing. May be a scaffold protein that promotes the assembly of interacting proteins at Z-line structures. It is essential for calcineurin anchorage to the Z line. Required for stress-induced calcineurin-NFAT activation (By similarity).

Aliases: cardiac antibody, Cardiac LIM protein antibody, CLP antibody, CMD1M antibody, CMH12 antibody, CRP3 antibody, Csrp3 antibody, CSRP3_HUMAN antibody, Cysteine and glycine-rich protein 3 antibody, Cysteine rich protein 3 antibody, Cysteine-rich protein 3 antibody, LIM domain only 4 antibody, LIM domain protein antibody, LMO4 antibody, MLP antibody, Muscle LIM protein antibody

UniProt: [P50461](#)

Application Details

Application Notes: Recommended dilution: IHC:1:20-1:200,

Restrictions: For Research Use only

Handling

Format: Liquid

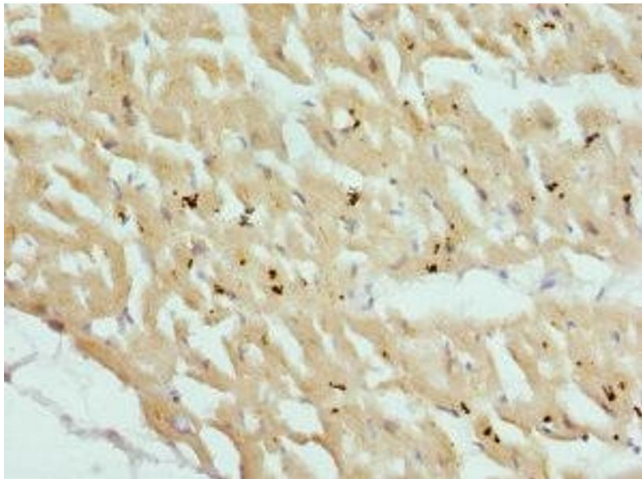
Buffer: PBS with 0.02 % sodium azide, 50 % glycerol, pH 7.3.

Preservative: Sodium azide

Precaution of Use: This product contains Sodium azide: a POISONOUS AND HAZARDOUS SUBSTANCE which should be handled by trained staff only.

Storage: -20 °C,-80 °C

Storage Comment: Upon receipt, store at -20°C or -80°C. Avoid repeated freeze.



Immunohistochemistry

Image 1. Immunohistochemistry of paraffin-embedded human heart tissue using ABIN7149013 at dilution of 1:100



Immunohistochemistry

Image 2. Immunohistochemistry of paraffin-embedded human skeletal muscle tissue using ABIN7149013 at dilution of 1:100