

Datasheet for ABIN7149014
anti-CSRP3 antibody (AA 1-194)

3 Images

[Go to Product page](#)

Overview

Quantity:	100 µL
Target:	CSRP3
Binding Specificity:	AA 1-194
Reactivity:	Human
Host:	Rabbit
Clonality:	Polyclonal
Conjugate:	This CSRP3 antibody is un-conjugated
Application:	Western Blotting (WB), ELISA, Immunohistochemistry (IHC)

Product Details

Immunogen:	Recombinant Human Cysteine and glycine-rich protein 3 protein (1-194AA)
Isotype:	IgG
Cross-Reactivity:	Human, Mouse
Purification:	Antigen Affinity Purified

Target Details

Target:	CSRP3
Alternative Name:	CSRP3 (CSRP3 Products)
Background:	Background: Positive regulator of myogenesis. Plays a crucial and specific role in the organization of cytosolic structures in cardiomyocytes. Could play a role in mechanical stretch

Target Details

sensing. May be a scaffold protein that promotes the assembly of interacting proteins at Z-line structures. It is essential for calcineurin anchorage to the Z line. Required for stress-induced calcineurin-NFAT activation (By similarity).

Aliases: cardiac antibody, Cardiac LIM protein antibody, CLP antibody, CMD1M antibody, CMH12 antibody, CRP3 antibody, Csrp3 antibody, CSRP3_HUMAN antibody, Cysteine and glycine-rich protein 3 antibody, Cysteine rich protein 3 antibody, Cysteine-rich protein 3 antibody, LIM domain only 4 antibody, LIM domain protein antibody, LMO4 antibody, MLP antibody, Muscle LIM protein antibody

UniProt: [P50461](#)

Application Details

Application Notes: Recommended dilution: WB:1:1000-1:5000, IHC:1:20-1:200,

Restrictions: For Research Use only

Handling

Format: Liquid

Buffer: PBS with 0.02 % sodium azide, 50 % glycerol, pH 7.3.

Preservative: Sodium azide

Precaution of Use: This product contains Sodium azide: a POISONOUS AND HAZARDOUS SUBSTANCE which should be handled by trained staff only.

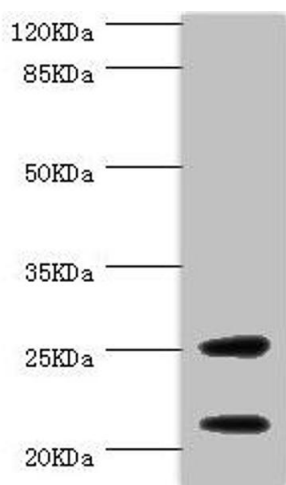
Storage: -20 °C,-80 °C

Storage Comment: Upon receipt, store at -20°C or -80°C. Avoid repeated freeze.



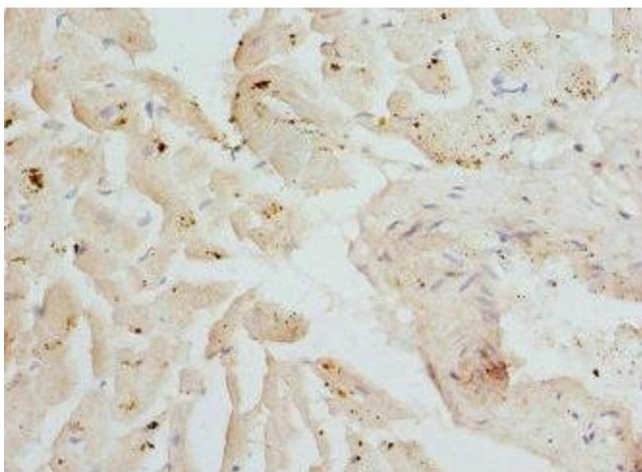
Immunohistochemistry

Image 1. Immunohistochemistry of paraffin-embedded human skeletal muscle tissue using ABIN7149014 at dilution of 1:100



Western Blotting

Image 2. Western blot All lanes: CSRP3 antibody at 1 µg/mL + Mouse skeletal muscle tissue Secondary Goat polyclonal to rabbit IgG at 1/10000 dilution Predicted band size: 21 kDa Observed band size: 21, 25 kDa



Immunohistochemistry

Image 3. Immunohistochemistry of paraffin-embedded human heart tissue using ABIN7149014 at dilution of 1:100