



Datasheet for ABIN7149026
anti-ATG4C antibody (AA 419-448)



[Go to Product page](#)

3 Images

Overview

Quantity:	100 µg
Target:	ATG4C
Binding Specificity:	AA 419-448
Reactivity:	Human
Host:	Rabbit
Clonality:	Polyclonal
Conjugate:	This ATG4C antibody is un-conjugated
Application:	ELISA, Immunohistochemistry (IHC), Immunofluorescence (IF)

Product Details

Immunogen:	Recombinant Human Cysteine protease ATG4C protein (419-448AA)
Isotype:	IgG
Cross-Reactivity:	Human
Purification:	>95%, Protein G purified

Target Details

Target:	ATG4C
Alternative Name:	ATG4C (ATG4C Products)
Background:	Background: Cysteine protease required for the cytoplasm to vacuole transport (Cvt) and autophagy. Is not essential for autophagy development under normal conditions but is required

Target Details

for a proper autophagic response under stressful conditions such as prolonged starvation (By similarity). Cleaves the C-terminal amino acid of ATG8 family proteins MAP1LC3 and GABARAPL2, to reveal a C-terminal glycine. Exposure of the glycine at the C-terminus is essential for ATG8 proteins conjugation to phosphatidylethanolamine (PE) and insertion to membranes, which is necessary for autophagy. Has also an activity of delipidating enzyme for the PE-conjugated forms.

Aliases: APG4 autophagy 4 homolog C (*S. cerevisiae*) antibody, APG4 autophagy 4 homolog C antibody, APG4 C antibody, APG4-C antibody, APG4C antibody, ATG 4C antibody, ATG4 autophagy related 4 homolog C (*S. cerevisiae*) antibody, ATG4 autophagy related 4 homolog C antibody, Atg4c antibody, ATG4C_HUMAN antibody, AUT (*S. cerevisiae*) like 1, cysteine endopeptidase antibody, AUT like 1, cysteine endopeptidase (*S. cerevisiae*) antibody, AUT like 1, cysteine endopeptidase antibody, AUT like 3 cysteine endopeptidase antibody, AUT-like 3 cysteine endopeptidase antibody, AUTL1 antibody, AUTL3 antibody, Autophagin 3 antibody, Autophagin-3 antibody, Autophagy related 4C cysteine peptidase antibody, Autophagy related cysteine endopeptidase 3 antibody, Autophagy related protein 4 homolog C antibody, Autophagy-related cysteine endopeptidase 3 antibody, Autophagy-related protein 4 homolog C antibody, Cysteine protease ATG4C antibody, EC 3.4.22 antibody, FLJ14867 antibody, OTTHUMP00000010715 antibody

UniProt: [Q96DT6](#)

Pathways: [Autophagy](#)

Application Details

Application Notes: Recommended dilution: IHC:1:20-1:200, IF:1:50-1:200,

Restrictions: For Research Use only

Handling

Format: Liquid

Buffer: Preservative: 0.03 % Proclin 300
Constituents: 50 % Glycerol, 0.01M PBS, pH 7.4

Preservative: ProClin

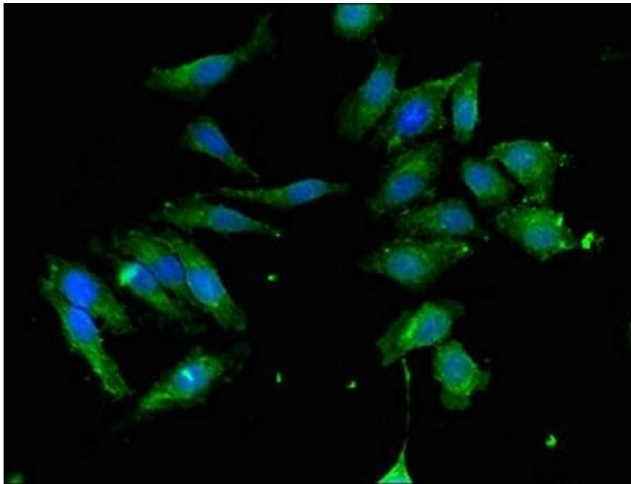
Precaution of Use: This product contains ProClin: a POISONOUS AND HAZARDOUS SUBSTANCE which should be handled by trained staff only.

Handling

Storage: -20 °C,-80 °C

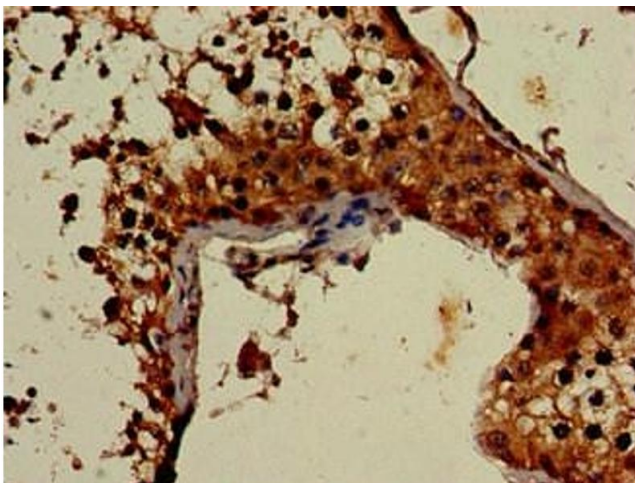
Storage Comment: Upon receipt, store at -20°C or -80°C. Avoid repeated freeze.

Images



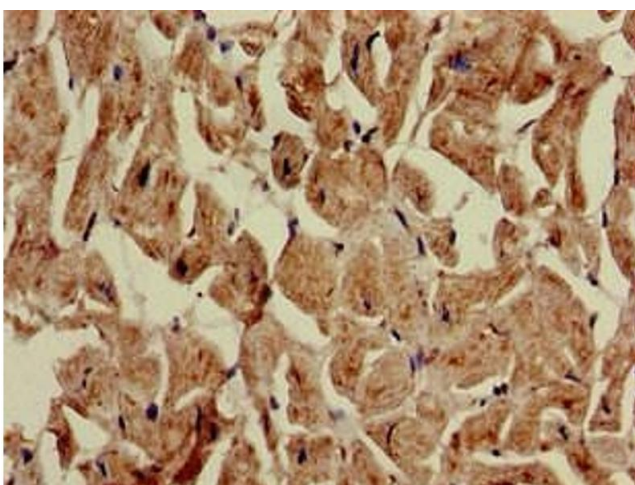
Immunofluorescence

Image 1. Immunofluorescent analysis of HeLa cells using ABIN7149026 at dilution of 1:100 and Alexa Fluor 488-conjugated AffiniPure Goat Anti-Rabbit IgG(H+L)



Immunohistochemistry

Image 2. Immunohistochemistry of paraffin-embedded human testis tissue using ABIN7149026 at dilution of 1:100



Immunohistochemistry

Image 3. Immunohistochemistry of paraffin-embedded human heart tissue using ABIN7149026 at dilution of 1:100