

Datasheet for ABIN7149030
anti-ATG4D antibody (AA 14-43)

4 Images

[Go to Product page](#)

Overview

| | |
|----------------------|---|
| Quantity: | 100 µg |
| Target: | ATG4D |
| Binding Specificity: | AA 14-43 |
| Reactivity: | Human |
| Host: | Rabbit |
| Clonality: | Polyclonal |
| Conjugate: | This ATG4D antibody is un-conjugated |
| Application: | Western Blotting (WB), ELISA, Immunohistochemistry (IHC), Immunofluorescence (IF) |

Product Details

| | |
|-------------------|---|
| Immunogen: | Recombinant Human Cysteine protease ATG4D protein (14-43AA) |
| Isotype: | IgG |
| Cross-Reactivity: | Human, Mouse |
| Purification: | >95%, Protein G purified |

Target Details

| | |
|-------------------|--|
| Target: | ATG4D |
| Alternative Name: | ATG4D (ATG4D Products) |
| Background: | Background: Cysteine protease ATG4D: Cysteine protease required for the cytoplasm to vacuole transport (Cvt) and autophagy. Cleaves the C-terminal amino acid of ATG8 family |

Target Details

proteins MAP1LC3 and GABARAPL2, to reveal a C-terminal glycine. Exposure of the glycine at the C-terminus is essential for ATG8 proteins conjugation to phosphatidylethanolamine (PE) and insertion to membranes, which is necessary for autophagy. Has also an activity of delipidating enzyme for the PE-conjugated forms.

Aliases: 9830134P12Rik antibody, APG4 autophagy 4 homolog D antibody, APG4 D antibody, APG4, *S. cerevisiae*, homolog of, D antibody, APG4D antibody, ATG4 autophagy related 4 homolog D (*S. cerevisiae*) antibody, Atg4d antibody, ATG4D_HUMAN antibody, Atg4dl antibody, AUT like 4 cysteine endopeptidase antibody, AUT-like 4 cysteine endopeptidase antibody, AUTL4 antibody, Autophagin 4 antibody, Autophagin-4 antibody, autophagy 4, *S. cerevisiae*, homolog of, D antibody, autophagy related 4D, cysteine peptidase antibody, Autophagy related cysteine endopeptidase 4 antibody, Autophagy related protein 4 homolog D antibody, Autophagy-related cysteine endopeptidase 4 antibody, Autophagy-related protein 4 homolog D antibody, Cysteine protease ATG4D antibody, Cysteine protease involved in autophagy antibody, MGC31226 antibody

UniProt: [Q86TL0](#)

Pathways: [Autophagy](#)

Application Details

Application Notes: Recommended dilution: WB:1:500-1:5000, IHC:1:500-1:1000, IF:1:200-1:500,

Restrictions: For Research Use only

Handling

Format: Liquid

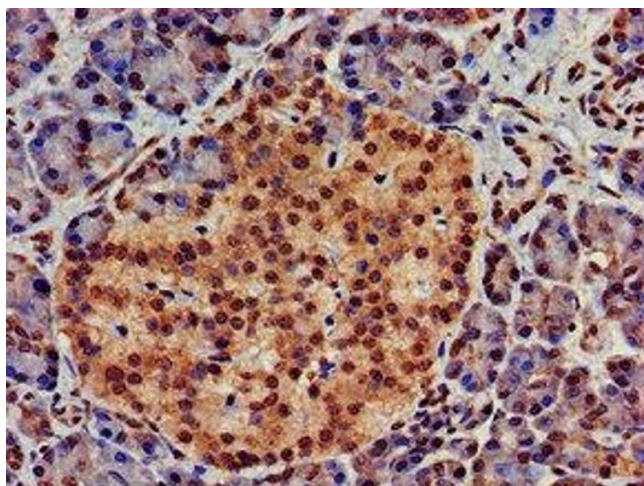
Buffer: Preservative: 0.03 % Proclin 300
Constituents: 50 % Glycerol, 0.01M PBS, PH 7.4

Preservative: ProClin

Precaution of Use: This product contains ProClin: a POISONOUS AND HAZARDOUS SUBSTANCE which should be handled by trained staff only.

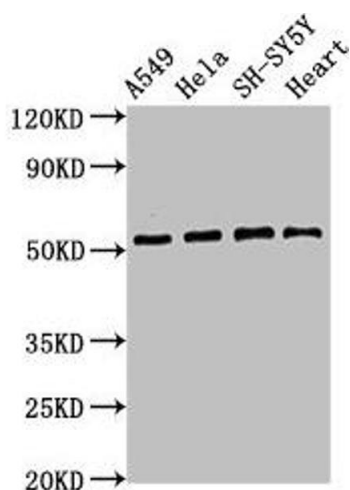
Storage: -20 °C, -80 °C

Storage Comment: Upon receipt, store at -20°C or -80°C. Avoid repeated freeze.



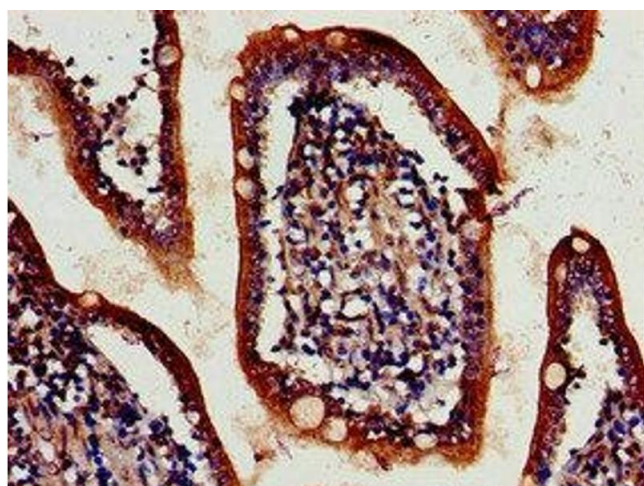
Immunohistochemistry

Image 1. IHC image of ABIN7149030 diluted at 1:700 and staining in paraffin-embedded human pancreatic tissue performed on a Leica Bond™ system. After dewaxing and hydration, antigen retrieval was mediated by high pressure in a citrate buffer (pH 6.0). Section was blocked with 10% normal goat serum 30min at RT. Then primary antibody (1% BSA) was incubated at 4°C overnight. The primary is detected by a biotinylated secondary antibody and visualized using an HRP conjugated SP system.



Western Blotting

Image 2. Western Blot Positive WB detected in: A549 whole cell lysate, HeLa whole cell lysate, SH-SY5Y whole cell lysate, Mouse heart tissue All lanes: ATG4D antibody at 2.8 µg/mL Secondary Goat polyclonal to rabbit IgG at 1/50000 dilution Predicted band size: 53, 17 kDa Observed band size: 53 kDa



Immunohistochemistry

Image 3. IHC image of ABIN7149030 diluted at 1:700 and staining in paraffin-embedded human small intestine tissue performed on a Leica Bond™ system. After dewaxing and hydration, antigen retrieval was mediated by high pressure in a citrate buffer (pH 6.0). Section was blocked with 10% normal goat serum 30min at RT. Then primary antibody (1% BSA) was incubated at 4°C overnight. The primary is detected by a biotinylated secondary antibody and visualized using an HRP conjugated SP system.

Please check the [product details page](#) for more images. Overall 4 images are available for ABIN7149030.