

Datasheet for ABIN7149086

anti-Cytochrome B Reductase 1 antibody (AA 220-286)[Go to Product page](#)**1** Image

Overview

Quantity:	100 µg
Target:	Cytochrome B Reductase 1 (CYBRD1)
Binding Specificity:	AA 220-286
Reactivity:	Human
Host:	Rabbit
Clonality:	Polyclonal
Conjugate:	This Cytochrome B Reductase 1 antibody is un-conjugated
Application:	ELISA, Immunofluorescence (IF)

Product Details

Immunogen:	Recombinant Human Cytochrome b reductase 1 protein (220-286AA)
Isotype:	IgG
Cross-Reactivity:	Human
Purification:	>95%, Protein G purified

Target Details

Target:	Cytochrome B Reductase 1 (CYBRD1)
Alternative Name:	CYBRD1 (CYBRD1 Products)
Background:	Background: Ferric-chelate reductase that reduces Fe(3+) to Fe(2+). Present at the brush border of duodenal enterocytes where it probably reduces dietary Fe(3+) thereby facilitating its

Target Details

transport into the mucosal cells. Uses ascorbate as electron donor. May be involved in extracellular ascorbate recycling in erythrocyte membranes. May also act as a ferrireductase in airway epithelial cells.

Aliases: CYBR 1 antibody, CYBR1 antibody, CYBR1_HUMAN antibody, CYBRD 1 antibody, cybrd1 antibody, Cytochrome b reductase 1 antibody, DCYTB antibody, DKFZp564E227 antibody, Duodenal cytochrome b antibody, Ferric chelate reductase 3 antibody, Ferric-chelate reductase 3 antibody, FLJ23462 antibody, FRRS3 antibody

UniProt: [Q53TN4](#)

Pathways: [Transition Metal Ion Homeostasis](#)

Application Details

Application Notes: Recommended dilution: IF:1:200-1:500,

Restrictions: For Research Use only

Handling

Format: Liquid

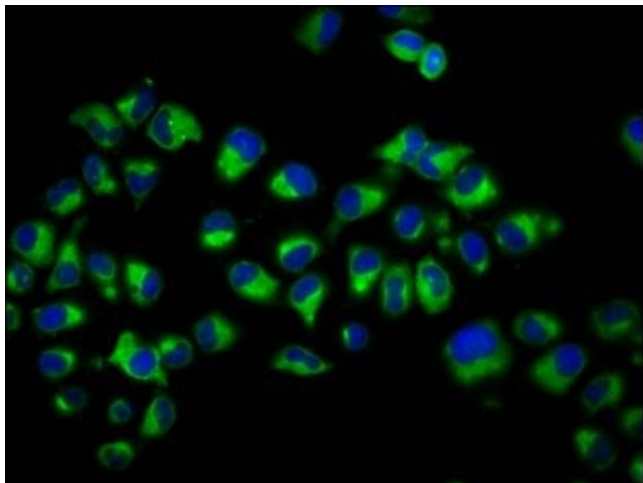
Buffer: Preservative: 0.03 % Proclin 300
Constituents: 50 % Glycerol, 0.01M PBS, pH 7.4

Preservative: ProClin

Precaution of Use: This product contains ProClin: a POISONOUS AND HAZARDOUS SUBSTANCE which should be handled by trained staff only.

Storage: -20 °C,-80 °C

Storage Comment: Upon receipt, store at -20°C or -80°C. Avoid repeated freeze.



Immunofluorescence

Image 1. Immunofluorescence staining of HeLa cells with ABIN7149086 at 1:200, counter-stained with DAPI. The cells were fixed in 4% formaldehyde, permeabilized using 0.2% Triton X-100 and blocked in 10% normal Goat Serum. The cells were then incubated with the antibody overnight at 4°C. The secondary antibody was Alexa Fluor 488-conjugated AffiniPure Goat Anti-Rabbit IgG(H+L).