



[Go to Product page](#)

Datasheet for ABIN7149102

anti-UQCRC1 antibody (AA 156-480)

3 Images

Overview

Quantity:	100 µL
Target:	UQCRC1
Binding Specificity:	AA 156-480
Reactivity:	Human
Host:	Rabbit
Clonality:	Polyclonal
Conjugate:	This UQCRC1 antibody is un-conjugated
Application:	Western Blotting (WB), Immunohistochemistry (IHC), ELISA

Product Details

Immunogen:	Recombinant Human Cytochrome b-c1 complex subunit 1, mitochondrial protein (156-480AA)
Isotype:	IgG
Cross-Reactivity:	Human, Mouse
Purification:	Antigen Affinity Purified

Target Details

Target:	UQCRC1
Alternative Name:	UQCRC1 (UQCRC1 Products)
Background:	Background: This is a component of the ubiquinol-cytochrome c reductase complex (complex III or cytochrome b-c1 complex), which is part of the mitochondrial respiratory chain. This

Target Details

protein may mediate formation of the complex between cytochromes c and c1.

Aliases: Complex III subunit 1 antibody, Core protein I antibody, Cytochrome b-c1 complex subunit 1 antibody, cytochrome b-c1 complex subunit 1, mitochondrial antibody, D3S3191 antibody, mitochondrial antibody, OTTHUMP00000164820 antibody, QCR1 antibody, QCR1_HUMAN antibody, Ubiquinol cytochrome c reductase complex core protein 1 antibody, ubiquinol-cytochrome c reductase core protein I antibody, Ubiquinol-cytochrome-c reductase complex core protein 1 antibody, UQCR1 antibody, Uqcrc1 antibody

UniProt: [P31930](#)

Application Details

Application Notes: Recommended dilution: WB:1:1000-1:5000, IHC:1:20-1:200,

Restrictions: For Research Use only

Handling

Format: Liquid

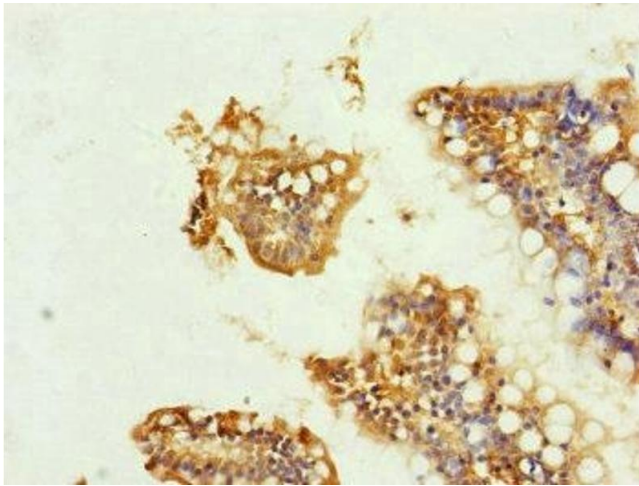
Buffer: PBS with 0.02 % sodium azide, 50 % glycerol, pH 7.3.

Preservative: Sodium azide

Precaution of Use: This product contains Sodium azide: a POISONOUS AND HAZARDOUS SUBSTANCE which should be handled by trained staff only.

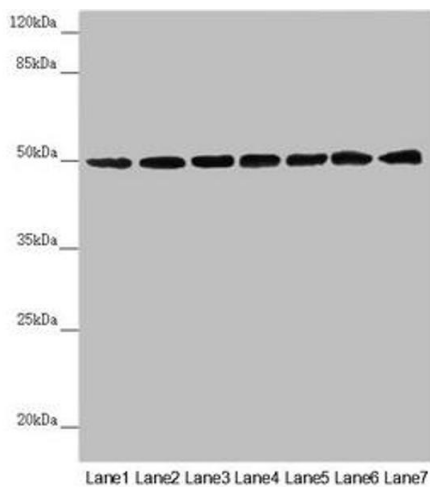
Storage: -20 °C,-80 °C

Storage Comment: Upon receipt, store at -20°C or -80°C. Avoid repeated freeze.



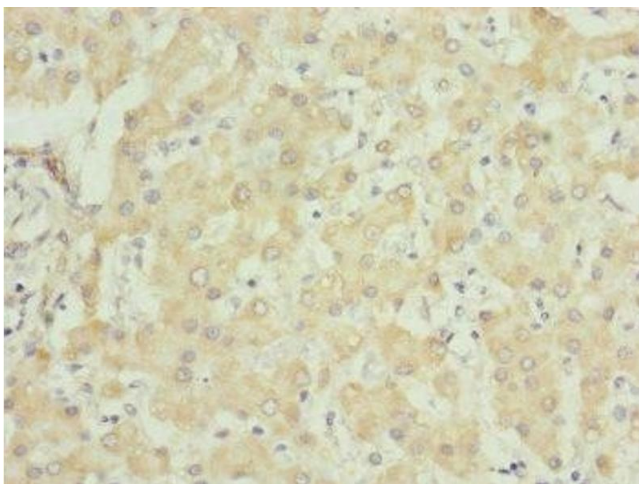
Immunohistochemistry

Image 1. Immunohistochemistry of paraffin-embedded human small intestine tissue using ABIN7149102 at dilution of 1:100



Western Blotting

Image 2. Western blot All lanes: UQCRC1 antibody at 2.5 μ g/mL Lane 1: Mouse large intestine tissue Lane 2: Mouse kidney tissue Lane 3: Mouse brain tissue Lane 4: LO2 whole cell lysate Lane 5: Hela whole cell lysate Lane 6: HepG2 whole cell lysate Lane 7: MCF-7 whole cell lysate Secondary Goat polyclonal to rabbit IgG at 1/10000 dilution Predicted band size: 53 kDa Observed band size: 53 kDa



Immunohistochemistry

Image 3. Immunohistochemistry of paraffin-embedded human liver tissue using ABIN7149102 at dilution of 1:100