



[Go to Product page](#)

Datasheet for ABIN7149113
anti-UQCRC1 antibody (AA 1-63)

3 Images

Overview

Quantity:	100 µL
Target:	UQCRC1
Binding Specificity:	AA 1-63
Reactivity:	Human
Host:	Rabbit
Clonality:	Polyclonal
Conjugate:	This UQCRC1 antibody is un-conjugated
Application:	Western Blotting (WB), Immunohistochemistry (IHC), ELISA

Product Details

Immunogen:	Recombinant Human Cytochrome b-c1 complex subunit 9 protein (1-63AA)
Isotype:	IgG
Cross-Reactivity:	Human
Purification:	Antigen Affinity Purified

Target Details

Target:	UQCRC1
Alternative Name:	UQCR1 (UQCRC1 Products)
Background:	Background: This is a component of the ubiquinol-cytochrome c reductase complex (complex III or cytochrome b-c1 complex), which is part of the mitochondrial respiratory chain. This

Target Details

subunit interacts with cytochrome c1 (By similarity).

Aliases: UQCR10 antibody, UCRC antibody, HSPC119 antibody, Cytochrome b-c1 complex subunit 9 antibody, Complex III subunit 9 antibody, Complex III subunit X antibody, Cytochrome c1 non-heme 7 kDa protein antibody, Ubiquinol-cytochrome c reductase complex 7.2 kDa protein antibody

UniProt: [Q9UDW1](#)

Application Details

Application Notes: Recommended dilution: WB:1:1000-1:5000, IHC:1:20-1:200,

Restrictions: For Research Use only

Handling

Format: Liquid

Buffer: PBS with 0.02 % sodium azide, 50 % glycerol, pH 7.3.

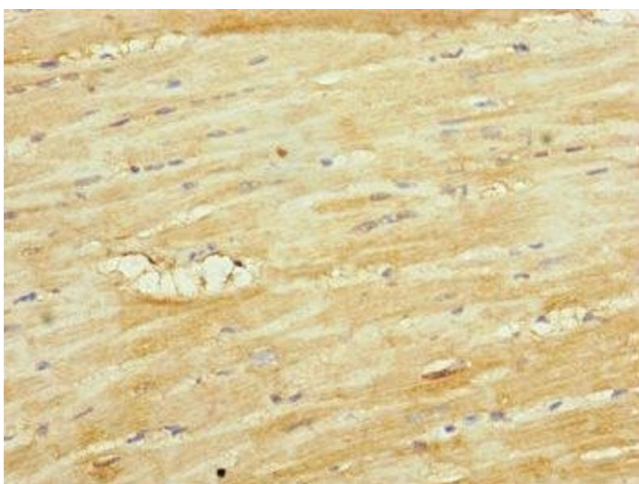
Preservative: Sodium azide

Precaution of Use: This product contains Sodium azide: a POISONOUS AND HAZARDOUS SUBSTANCE which should be handled by trained staff only.

Storage: -20 °C,-80 °C

Storage Comment: Upon receipt, store at -20°C or -80°C. Avoid repeated freeze.

Images



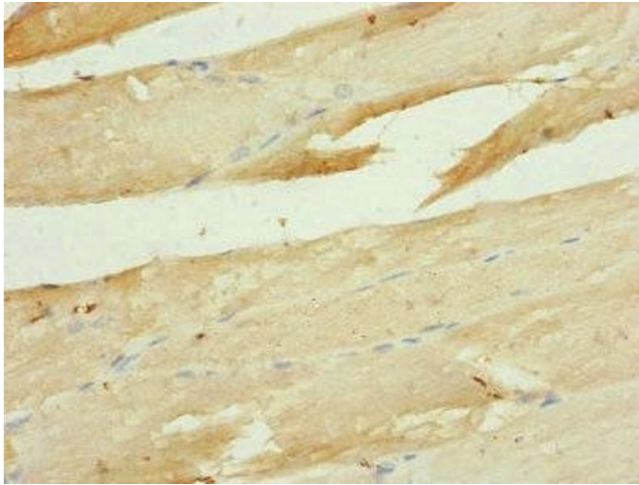
Immunohistochemistry

Image 1. Immunohistochemistry of paraffin-embedded human heart tissue using ABIN7149113 at dilution of 1:100



Western Blotting

Image 2. Western blot All lanes: UQCR10 antibody at 2.02 μ g/mL + HepG2 whole cell lysate Secondary Goat polyclonal to rabbit IgG at 1/10000 dilution Predicted band size: 8, 7 kDa Observed band size: 8 kDa



Immunohistochemistry

Image 3. Immunohistochemistry of paraffin-embedded human skeletal muscle tissue using ABIN7149113 at dilution of 1:100