



[Go to Product page](#)

Datasheet for ABIN7149158  
**anti-COX2 antibody (AA 83-227)**

3 Images

Overview

Quantity:	100 µg
Target:	COX2
Binding Specificity:	AA 83-227
Reactivity:	Human
Host:	Rabbit
Clonality:	Polyclonal
Conjugate:	This COX2 antibody is un-conjugated
Application:	Western Blotting (WB), Immunohistochemistry (IHC), ELISA

Product Details

Immunogen:	Recombinant Human Cytochrome c oxidase subunit 2 protein (83-227AA)
Isotype:	IgG
Cross-Reactivity:	Human
Purification:	>95%, Protein G purified

Target Details

Target:	COX2
Alternative Name:	MT-CO2 ( <a href="#">COX2 Products</a> )
Background:	Background: Cytochrome c oxidase is the component of the respiratory chain that catalyzes the reduction of oxygen to water. Subunits 1-3 form the functional core of the enzyme complex.

## Target Details

---

Subunit 2 transfers the electrons from cytochrome c via its binuclear copper A center to the bimetallic center of the catalytic subunit 1.

Aliases: COII antibody, COX 2 antibody, COX II antibody, COX2 antibody, COX2\_HUMAN antibody, COXII antibody, Cytochrome c oxidase II antibody, Cytochrome c oxidase polypeptide II antibody, Cytochrome c oxidase subunit 2 antibody, MT CO2 antibody, MT-CO2 antibody, MTCO2 antibody

---

UniProt: [P00403](#)

---

Pathways: [Brown Fat Cell Differentiation](#), [Positive Regulation of fat Cell Differentiation](#)

## Application Details

---

---

Application Notes: Recommended dilution: WB:1:500-1:5000, IHC:1:200-1:500,

---

Restrictions: For Research Use only

## Handling

---

---

Format: Liquid

---

Buffer: Preservative: 0.03 % Proclin 300  
Constituents: 50 % Glycerol, 0.01M PBS, pH 7.4

---

Preservative: ProClin

---

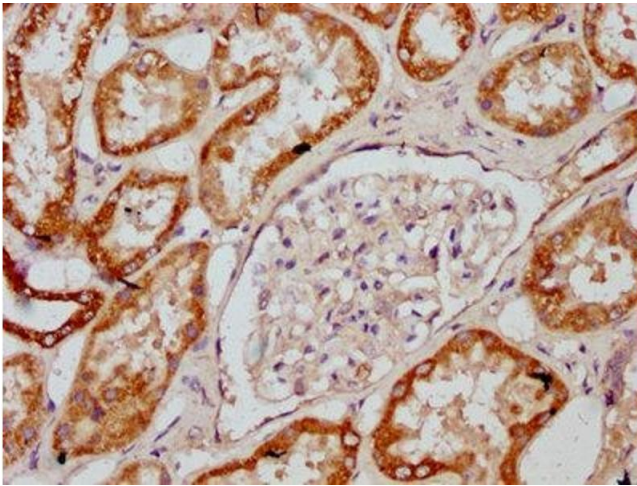
Precaution of Use: This product contains ProClin: a POISONOUS AND HAZARDOUS SUBSTANCE which should be handled by trained staff only.

---

Storage: -20 °C,-80 °C

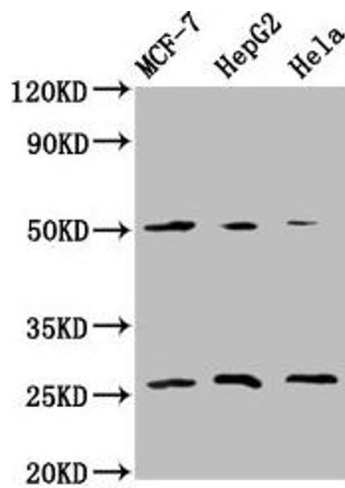
---

Storage Comment: Upon receipt, store at -20°C or -80°C. Avoid repeated freeze.



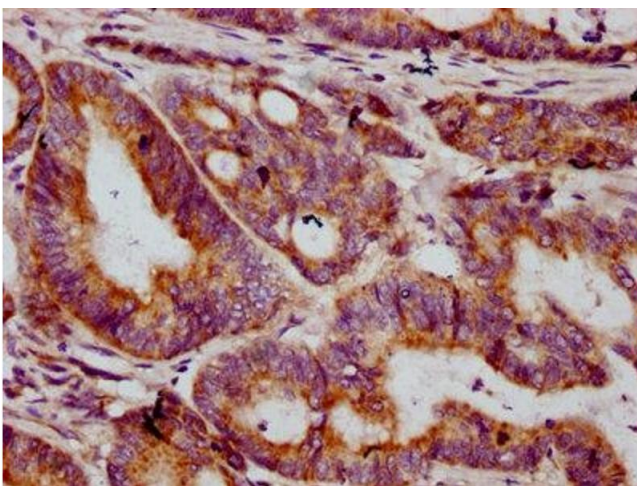
### Immunohistochemistry

**Image 1.** IHC image of ABIN7149158 diluted at 1:400 and staining in paraffin-embedded human kidney tissue performed on a Leica Bond™ system. After dewaxing and hydration, antigen retrieval was mediated by high pressure in a citrate buffer (pH 6.0). Section was blocked with 10% normal goat serum 30min at RT. Then primary antibody (1% BSA) was incubated at 4°C overnight. The primary is detected by a biotinylated secondary antibody and visualized using an HRP conjugated SP system.



### Western Blotting

**Image 2.** Western Blot Positive WB detected in: MCF-7 whole cell lysate, HepG2 whole cell lysate, HeLa whole cell lysate All lanes: MT-CO2 antibody at 5.9 µg/mL Secondary Goat polyclonal to rabbit IgG at 1/50000 dilution Predicted band size: 26 kDa Observed band size: 26 kDa



### Immunohistochemistry

**Image 3.** IHC image of ABIN7149158 diluted at 1:400 and staining in paraffin-embedded human colon cancer performed on a Leica Bond™ system. After dewaxing and hydration, antigen retrieval was mediated by high pressure in a citrate buffer (pH 6.0). Section was blocked with 10% normal goat serum 30min at RT. Then primary antibody (1% BSA) was incubated at 4°C overnight. The primary is detected by a biotinylated secondary antibody and visualized using an HRP conjugated SP system.