

Datasheet for ABIN7149234
anti-CYP2A6 antibody (AA 86-267)



[Go to Product page](#)

1 Image

Overview

Quantity:	100 µg
Target:	CYP2A6
Binding Specificity:	AA 86-267
Reactivity:	Human
Host:	Rabbit
Clonality:	Polyclonal
Conjugate:	This CYP2A6 antibody is un-conjugated
Application:	Western Blotting (WB), ELISA

Product Details

Immunogen:	Recombinant Human Cytochrome P450 2A6 protein (86-267AA)
Isotype:	IgG
Cross-Reactivity:	Human, Rat
Purification:	>95%, Protein G purified

Target Details

Target:	CYP2A6
Alternative Name:	CYP2A6 (CYP2A6 Products)
Background:	Background: Exhibits a high coumarin 7-hydroxylase activity. Can act in the hydroxylation of the anti-cancer drugs cyclophosphamide and ifosphamide. Competent in the metabolic activation

Target Details

of aflatoxin B1. Constitutes the major nicotine C-oxidase. Acts as a 1,4-cineole 2-exo-monooxygenase. Possesses low phenacetin O-deethylation activity.

Aliases: Coumarin 7 hydroxylase antibody, Coumarin 7-hydroxylase antibody, CP2A6_HUMAN antibody, CPA6 antibody, CYP2A antibody, CYP2A3 antibody, CYP2A6 antibody, CYP1IA6 antibody, Cytochrome P450 2A6 antibody, Cytochrome P450 IIA3 antibody, Cytochrome P450 subfamily IIA (phenobarbital inducible) polypeptide 6 antibody, Cytochrome P450(I) antibody, Cytochrome P450, family 2 subfamily A polypeptide 6 antibody, Flavoprotein linked monooxygenase antibody, P450C2A antibody, P450PB antibody, Xenobiotic monooxygenase antibody

UniProt: [P11509](#)

Application Details

Application Notes: Recommended dilution: WB:1:500-1:5000,

Restrictions: For Research Use only

Handling

Format: Liquid

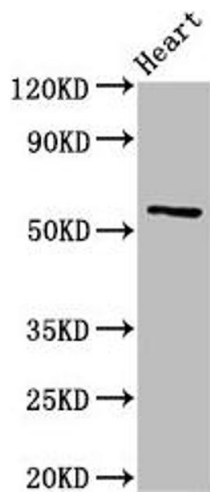
Buffer: Preservative: 0.03 % Proclin 300
Constituents: 50 % Glycerol, 0.01M PBS, pH 7.4

Preservative: ProClin

Precaution of Use: This product contains ProClin: a POISONOUS AND HAZARDOUS SUBSTANCE which should be handled by trained staff only.

Storage: -20 °C,-80 °C

Storage Comment: Upon receipt, store at -20°C or -80°C. Avoid repeated freeze.



Western Blotting

Image 1. Western Blot Positive WB detected in: Rat heart tissue All lanes: CYP2A6 antibody at 3 μ g/mL Secondary Goat polyclonal to rabbit IgG at 1/50000 dilution Predicted band size: 57 kDa Observed band size: 57 kDa