



[Go to Product page](#)

Datasheet for ABIN7149238

anti-CYP2B6 antibody (AA 250-343)

2 Images

Overview

Quantity:	100 µg
Target:	CYP2B6
Binding Specificity:	AA 250-343
Reactivity:	Human
Host:	Rabbit
Clonality:	Polyclonal
Conjugate:	This CYP2B6 antibody is un-conjugated
Application:	ELISA, Immunohistochemistry (IHC), Immunofluorescence (IF)

Product Details

Immunogen:	Recombinant Human Cytochrome P450 2B6 protein (250-343AA)
Isotype:	IgG
Cross-Reactivity:	Human
Purification:	>95%, Protein G purified

Target Details

Target:	CYP2B6
Alternative Name:	CYP2B6 (CYP2B6 Products)
Background:	Background: Cytochromes P450 are a group of heme-thiolate monooxygenases. In liver microsomes, this enzyme is involved in an NADPH-dependent electron transport pathway. It

Target Details

oxidizes a variety of structurally unrelated compounds, including steroids, fatty acids, and xenobiotics. Acts as a 1,4-cineole 2-exo-monooxygenase.

Aliases: 1,4 cineole 2 exo monooxygenase antibody, 11B1 antibody, CP2B6_HUMAN antibody, CPB 6 antibody, CPB6 antibody, CYP 2B6 antibody, CYP IIB6 antibody, CYP2B antibody, CYP2B6 antibody, CYP2B7 antibody, CYP2B7P antibody, CYP IIB6 antibody, Cytochrome P450 2B6 antibody, Cytochrome P450 family 2 subfamily B antibody, Cytochrome P450 family 2 subfamily B polypeptide 6 antibody, Cytochrome P450 IIB1 antibody, Cytochrome P450 phenobarbital inducible antibody, Cytochrome P450 subfamily IIB (phenobarbital inducible) antibody, Cytochrome P450 subfamily IIB (phenobarbital inducible) polypeptide 6 antibody, Cytochrome P450 subfamily IIB polypeptide 6 antibody, EFVM antibody, IIB1 antibody, P450 antibody, P450 IIB1 antibody, P450IIB1 antibody

UniProt: [P20813](#)

Application Details

Application Notes: Recommended dilution: IHC:1:20-1:200, IF:1:50-1:200,

Restrictions: For Research Use only

Handling

Format: Liquid

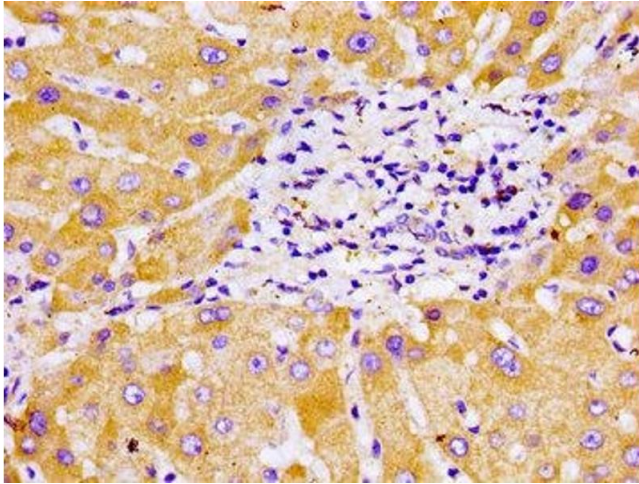
Buffer: Preservative: 0.03 % Proclin 300
Constituents: 50 % Glycerol, 0.01M PBS, pH 7.4

Preservative: ProClin

Precaution of Use: This product contains ProClin: a POISONOUS AND HAZARDOUS SUBSTANCE which should be handled by trained staff only.

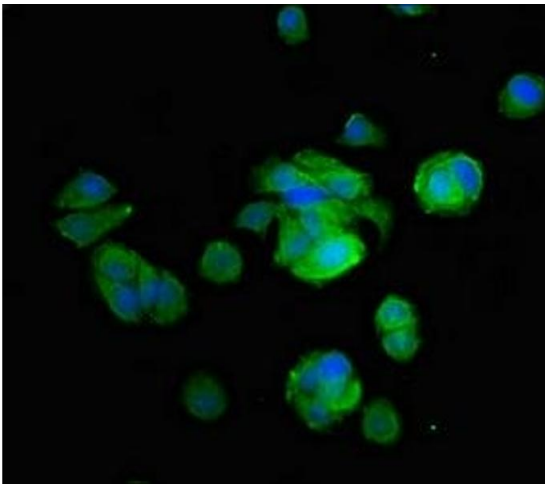
Storage: -20 °C,-80 °C

Storage Comment: Upon receipt, store at -20°C or -80°C. Avoid repeated freeze.



Immunohistochemistry

Image 1. Immunohistochemistry of paraffin-embedded human liver tissue using ABIN7149238 at dilution of 1:100



Immunofluorescence

Image 2. Immunofluorescent analysis of MCF-7 cells using ABIN7149238 at dilution of 1:100 and Alexa Fluor 488-conjugated AffiniPure Goat Anti-Rabbit IgG(H+L)