

Datasheet for ABIN7149288
anti-Cytohesin 2 antibody (AA 150-350)[Go to Product page](#)

3 Images

Overview

Quantity:	100 µL
Target:	Cytohesin 2 (CYTH2)
Binding Specificity:	AA 150-350
Reactivity:	Human
Host:	Rabbit
Clonality:	Polyclonal
Conjugate:	This Cytohesin 2 antibody is un-conjugated
Application:	Western Blotting (WB), ELISA, Immunohistochemistry (IHC)

Product Details

Immunogen:	Recombinant Human Cytohesin-2 protein (150-350AA)
Isotype:	IgG
Cross-Reactivity:	Human
Purification:	Antigen Affinity Purified

Target Details

Target:	Cytohesin 2 (CYTH2)
Alternative Name:	CYTH2 (CYTH2 Products)
Background:	Background: Acts as a guanine-nucleotide exchange factor (GEF). Promotes guanine-nucleotide exchange on ARF1, ARF3 and ARF6. Promotes the activation of ARF factors through

Target Details

replacement of GDP with GTP. The cell membrane form, in association with ARL4 proteins, recruits ARF6 to the plasma membrane. Involved in neurite growth (By similarity).

Aliases: ARF exchange factor antibody, ARF nucleotide binding site opener antibody, ARF nucleotide-binding site opener antibody, Arno antibody, ARNO protein antibody, CLM2 antibody, CTS18 antibody, CTS18.1 antibody, CYH2_HUMAN antibody, Cyth2 antibody, Cytohesin 2 antibody, Cytohesin-2 antibody, MGC137537 antibody, MGC80440 antibody, PH antibody, PH, SEC7 and coiled-coil domain-containing protein 2 antibody, Pleckstrin homology Sec7 and coiled coil domains 2 antibody, Pleckstrin homology Sec7 and coiled coil domains protein 2 antibody, Protein ARNO antibody, PSCD2 antibody, PSCD2L antibody, PSCD2L, formerly antibody, SEC7 and coiled-coil domain-containing protein 2 antibody, Sec7 antibody, SEC7 homolog B antibody, Sec7B antibody, SEC7L antibody, Sec7p L antibody, Sec7p-like antibody, Sec7pL antibody

UniProt: [Q99418](#)

Application Details

Application Notes: Recommended dilution: WB:1:1000-1:5000, IHC:1:20-1:200,

Restrictions: For Research Use only

Handling

Format: Liquid

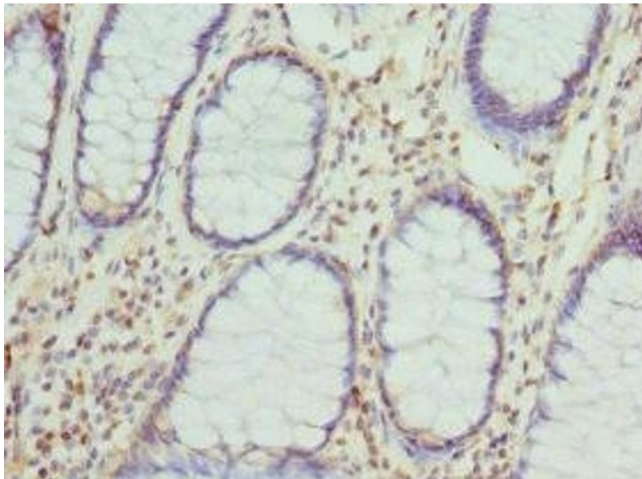
Buffer: PBS with 0.02 % sodium azide, 50 % glycerol, pH 7.3.

Preservative: Sodium azide

Precaution of Use: This product contains Sodium azide: a POISONOUS AND HAZARDOUS SUBSTANCE which should be handled by trained staff only.

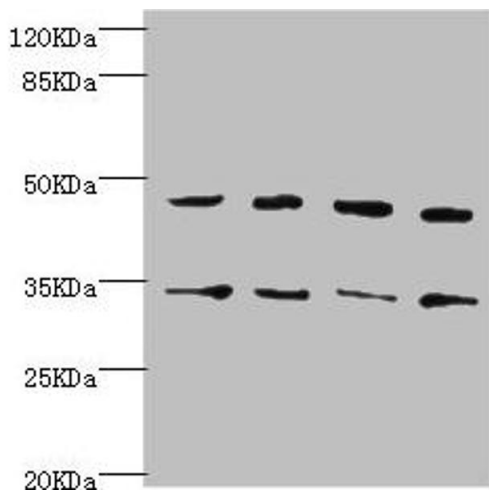
Storage: -20 °C, -80 °C

Storage Comment: Upon receipt, store at -20°C or -80°C. Avoid repeated freeze.



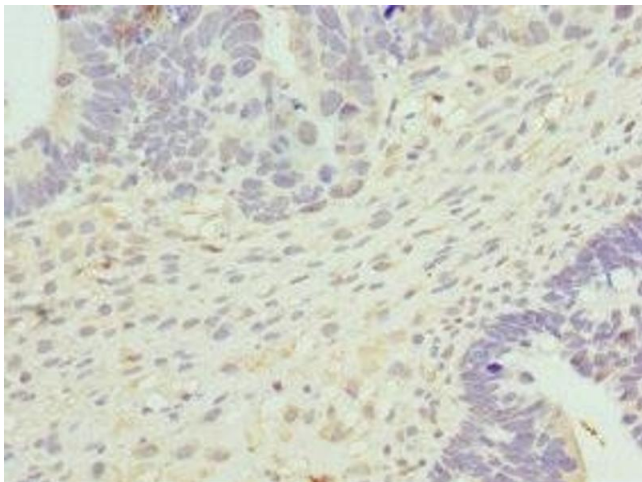
Immunohistochemistry

Image 1. Immunohistochemistry of paraffin-embedded human colon cancer using ABIN7149288 at dilution of 1:100



Western Blotting

Image 2. Western blot All lanes: CYTH2 antibody at 5.58 μ g/mL Lane 1: U251 whole cell lysate Lane 2: HepG2 whole cell lysate Lane 3: MCF-7 whole cell lysate Lane 4: A549 whole cell lysate Secondary Goat polyclonal to rabbit IgG at 1/10000 dilution Predicted band size: 47 kDa Observed band size: 47, 35 kDa



Immunohistochemistry

Image 3. Immunohistochemistry of paraffin-embedded human ovarian cancer using ABIN7149288 at dilution of 1:100