



[Go to Product page](#)

Datasheet for ABIN7149312
anti-DYNC1H1 antibody (AA 12-66)

2 Images

Overview

Quantity:	100 µg
Target:	DYNC1H1
Binding Specificity:	AA 12-66
Reactivity:	Human
Host:	Rabbit
Clonality:	Polyclonal
Conjugate:	This DYNC1H1 antibody is un-conjugated
Application:	ELISA, Immunohistochemistry (IHC), Immunofluorescence (IF)

Product Details

Immunogen:	Recombinant Human Cytoplasmic dynein 1 heavy chain 1 protein (12-66AA)
Isotype:	IgG
Cross-Reactivity:	Human
Purification:	>95%, Protein G purified

Target Details

Target:	DYNC1H1
Alternative Name:	DYNC1H1 (DYNC1H1 Products)
Background:	Background: Cytoplasmic dynein 1 acts as a motor for the intracellular retrograde motility of vesicles and organelles along microtubules. Dynein has ATPase activity, the force-producing

Target Details

power stroke is thought to occur on release of ADP.

Aliases: DYNC1H1 antibody, DHC1 antibody, DNCH1 antibody, DNCL antibody, DNECL antibody, DYHC antibody, KIAA0325Cytoplasmic dynein 1 heavy chain 1 antibody, Cytoplasmic dynein heavy chain 1 antibody, Dynein heavy chain antibody, cytosolic antibody

UniProt: [Q14204](#)

Pathways: [M Phase](#), [Ribonucleoprotein Complex Subunit Organization](#)

Application Details

Application Notes: Recommended dilution: IHC:1:20-1:200, IF:1:50-1:200,

Restrictions: For Research Use only

Handling

Format: Liquid

Buffer: Preservative: 0.03 % Proclin 300
Constituents: 50 % Glycerol, 0.01M PBS, pH 7.4

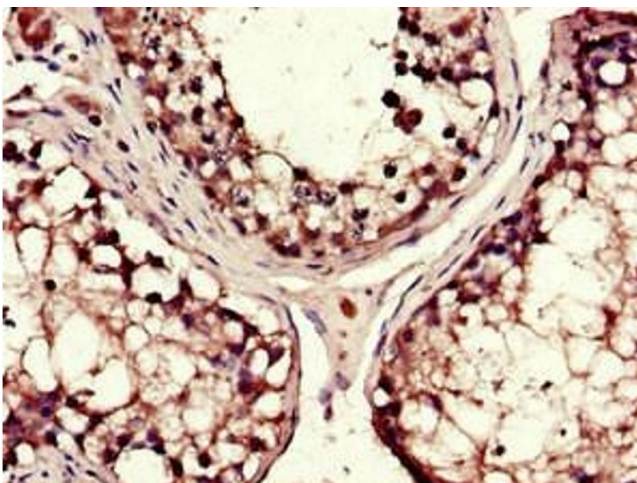
Preservative: ProClin

Precaution of Use: This product contains ProClin: a POISONOUS AND HAZARDOUS SUBSTANCE which should be handled by trained staff only.

Storage: -20 °C,-80 °C

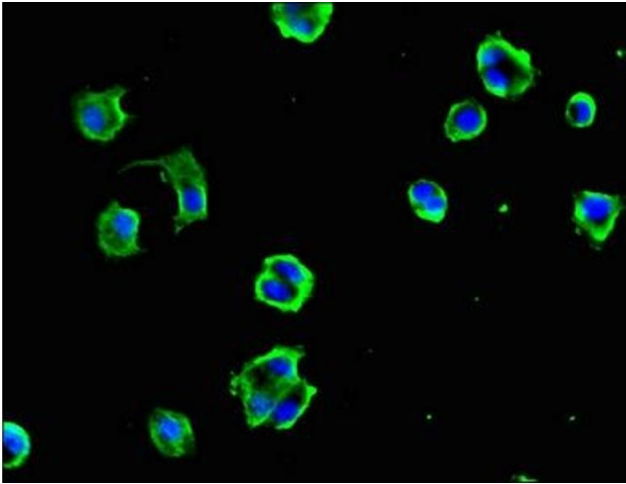
Storage Comment: Upon receipt, store at -20°C or -80°C. Avoid repeated freeze.

Images



Immunohistochemistry

Image 1. Immunohistochemistry of paraffin-embedded human testis tissue using ABIN7149312 at dilution of 1:100



Immunofluorescence

Image 2. Immunofluorescent analysis of MCF-7 cells using ABIN7149312 at dilution of 1:100 and Alexa Fluor 488-conjugated AffiniPure Goat Anti-Rabbit IgG(H+L)