

Datasheet for ABIN7149348
anti-CPEB4 antibody (AA 244-515)[Go to Product page](#)

2 Images

Overview

Quantity:	100 µg
Target:	CPEB4
Binding Specificity:	AA 244-515
Reactivity:	Human
Host:	Rabbit
Clonality:	Polyclonal
Conjugate:	This CPEB4 antibody is un-conjugated
Application:	ELISA, Western Blotting (WB), Immunofluorescence (IF)

Product Details

Immunogen:	Recombinant Human Cytoplasmic polyadenylation element-binding protein 4 protein (244-515AA)
Isotype:	IgG
Cross-Reactivity:	Human
Purification:	>95%, Protein G purified

Target Details

Target:	CPEB4
Alternative Name:	CPEB4 (CPEB4 Products)
Background:	Background: Sequence-specific RNA-binding protein that binds to the cytoplasmic

Target Details

polyadenylation element (CPE), an uridine-rich sequence element (consensus sequence 5'UUUUUAU-3') within the mRNA 3'-UTR (PubMed:24990967). RNA binding results in a clear conformational change analogous to the Venus fly trap mechanism (PubMed:24990967).

Regulates activation of unfolded protein response (UPR) in the process of adaptation to ER stress in liver, by maintaining translation of CPE-regulated mRNAs in conditions in which global protein synthesis is inhibited (By similarity). Required for cell cycle progression, specifically for cytokinesis and chromosomal segregation (PubMed:26398195). Plays a role as an oncogene promoting tumor growth and progression by positively regulating translation of t-plasminogen activator/PLAT (PubMed:22138752). Stimulates proliferation of melanocytes (PubMed:27857118). In contrast to CPEB1 and CPEB3, does not play role in synaptic plasticity, learning and memory (By similarity).

Aliases: CPE binding protein 4 antibody, CPE-binding protein 4 antibody, CPE-BP4 antibody, cpeb4 antibody, CPEB4_HUMAN antibody, Cytoplasmic polyadenylation element binding protein 4 antibody, Cytoplasmic polyadenylation element-binding protein 4 antibody, hCPEB-4 antibody, KIAA1673 antibody

UniProt: [Q17RY0](#)

Application Details

Application Notes: Recommended dilution: WB:1:1000-1:5000, IF:1:50-1:200,

Restrictions: For Research Use only

Handling

Format: Liquid

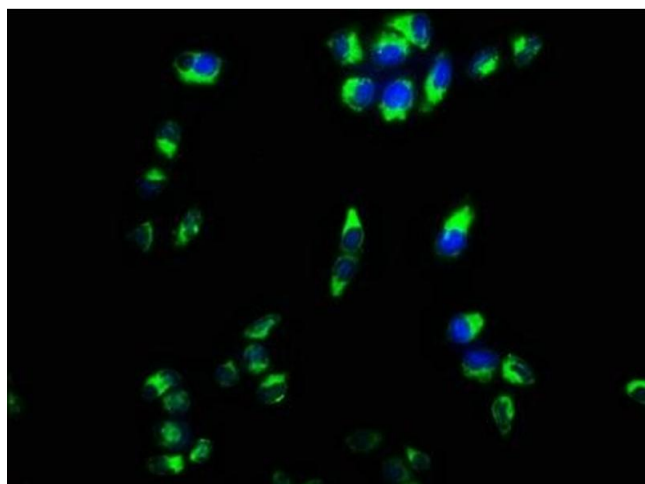
Buffer: Preservative: 0.03 % Proclin 300
Constituents: 50 % Glycerol, 0.01M PBS, PH 7.4

Preservative: ProClin

Precaution of Use: This product contains ProClin: a POISONOUS AND HAZARDOUS SUBSTANCE which should be handled by trained staff only.

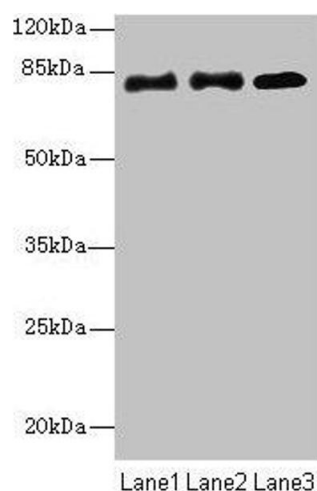
Storage: -20 °C, -80 °C

Storage Comment: Upon receipt, store at -20°C or -80°C. Avoid repeated freeze.



Immunofluorescence

Image 1. Immunofluorescence staining of HeLa cells with ABIN7149348 at 1:133, counter-stained with DAPI. The cells were fixed in 4% formaldehyde, permeabilized using 0.2% Triton X-100 and blocked in 10% normal Goat Serum. The cells were then incubated with the antibody overnight at 4°C. The secondary antibody was Alexa Fluor 488-conjugated AffiniPure Goat Anti-Rabbit IgG(H+L).



Western Blotting

Image 2. Western blot All lanes: CPEB4 antibody at 2 µg/mL
Lane 1: HeLa whole cell lysate Lane 2: 293T whole cell lysate
Lane 3: U87 whole cell lysate Secondary Goat polyclonal to rabbit IgG at 1/10000 dilution Predicted band size: 81, 79, 37 kDa Observed band size: 81 kDa