

Datasheet for ABIN7149360
anti-CKAP2L antibody (AA 246-413)

3 Images

[Go to Product page](#)

Overview

Quantity:	100 µg
Target:	CKAP2L
Binding Specificity:	AA 246-413
Reactivity:	Human
Host:	Rabbit
Clonality:	Polyclonal
Conjugate:	This CKAP2L antibody is un-conjugated
Application:	ELISA, Immunohistochemistry (IHC), Immunofluorescence (IF)

Product Details

Immunogen:	Recombinant Human Cytoskeleton-associated protein 2-like protein (246-413AA)
Isotype:	IgG
Cross-Reactivity:	Human
Purification:	>95%, Protein G purified

Target Details

Target:	CKAP2L
Alternative Name:	CKAP2L (CKAP2L Products)
Background:	Background: Microtubule-associated protein required for mitotic spindle formation and cell-cycle progression in neural progenitor cells.

Target Details

Aliases: CKAP2L antibody, CKP2L_HUMAN antibody, Cytoskeleton-associated protein 2-like antibody, FLJ40629 antibody

UniProt: [Q8IYA6](#)

Application Details

Application Notes: Recommended dilution: IHC:1:20-1:200, IF:1:50-1:200,

Restrictions: For Research Use only

Handling

Format: Liquid

Buffer: Preservative: 0.03 % Proclin 300
Constituents: 50 % Glycerol, 0.01M PBS, PH 7.4

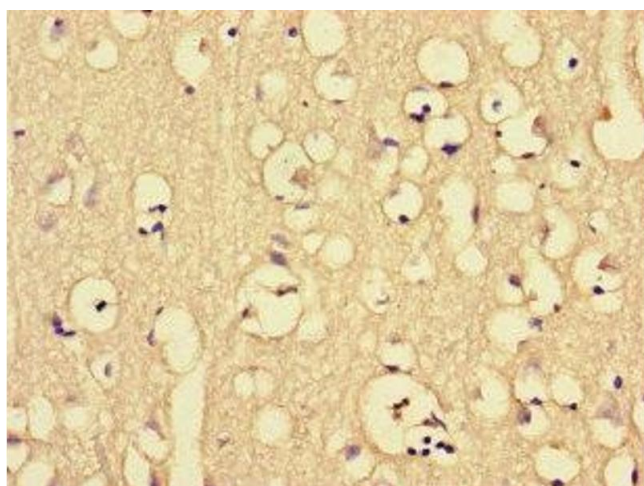
Preservative: ProClin

Precaution of Use: This product contains ProClin: a POISONOUS AND HAZARDOUS SUBSTANCE which should be handled by trained staff only.

Storage: -20 °C,-80 °C

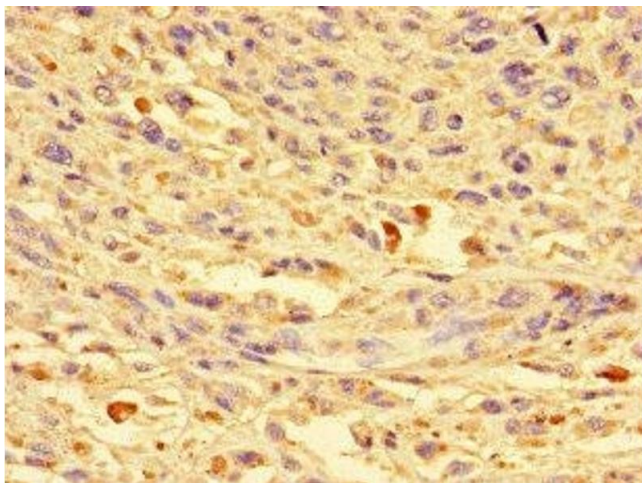
Storage Comment: Upon receipt, store at -20°C or -80°C. Avoid repeated freeze.

Images



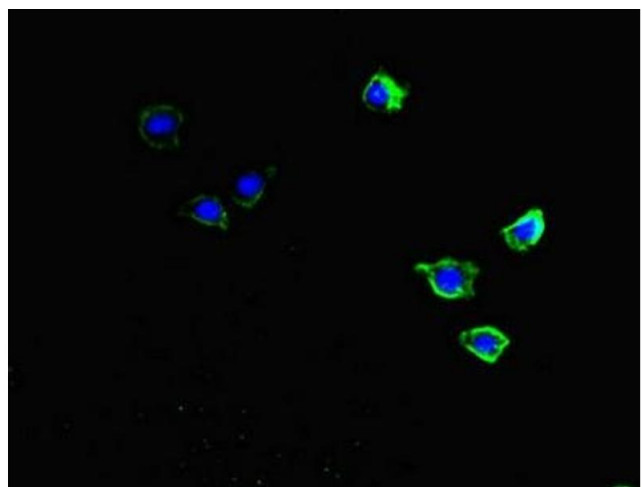
Immunohistochemistry

Image 1. Immunohistochemistry of paraffin-embedded human brain tissue using ABIN7149360 at dilution of 1:100



Immunohistochemistry

Image 2. Immunohistochemistry of paraffin-embedded human melanoma using ABIN7149360 at dilution of 1:100



Immunofluorescence

Image 3. Immunofluorescent analysis of HepG2 cells using ABIN7149360 at dilution of 1:100 and Alexa Fluor 488-conjugated AffiniPure Goat Anti-Rabbit IgG(H+L)