

Datasheet for ABIN7149404  
**anti-PLA2G4B antibody (AA 514-781)**[Go to Product page](#)

## 3 Images

## Overview

Quantity:	100 µL
Target:	PLA2G4B
Binding Specificity:	AA 514-781
Reactivity:	Human
Host:	Rabbit
Clonality:	Polyclonal
Conjugate:	This PLA2G4B antibody is un-conjugated
Application:	Western Blotting (WB), ELISA, Immunohistochemistry (IHC), Immunofluorescence (IF)

## Product Details

Immunogen:	Recombinant Human Cytosolic phospholipase A2 beta protein (514-781AA)
Isotype:	IgG
Cross-Reactivity:	Human
Purification:	>95%, Protein G purified

## Target Details

Target:	PLA2G4B
Alternative Name:	PLA2G4B ( <a href="#">PLA2G4B Products</a> )
Background:	Background: Calcium-dependent phospholipase A2 that selectively hydrolyzes glycerophospholipids in the sn-2 position with a preference for arachidonoyl phospholipids. Has

## Target Details

a much weaker activity than PLA2G4A. Isoform 3 has calcium-dependent activity against palmitoyl-arachidonyl-phosphatidylethanolamine and low level lysophospholipase activity but no activity against phosphatidylcholine. Isoform 5 does have activity against phosphatidylcholine.

Aliases: PLA2G4B antibody, Cytosolic phospholipase A2 beta antibody, cPLA2-beta antibody, EC 3.1.1.4 antibody, Phospholipase A2 group IVB antibody

UniProt: [P0C869](#)

Pathways: [ER-Nucleus Signaling](#), [VEGF Signaling](#)

## Application Details

Application Notes: Recommended dilution: WB:1:1000-1:5000, IHC:1:200-1:500, IF:1:50-1:200,

Restrictions: For Research Use only

## Handling

Format: Liquid

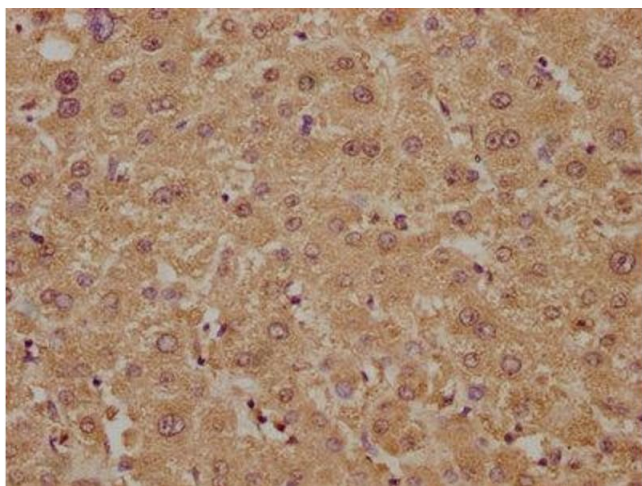
Buffer: Preservative: 0.03 % Proclin 300  
Constituents: 50 % Glycerol, 0.01M PBS, pH 7.4

Preservative: ProClin

Precaution of Use: This product contains ProClin: a POISONOUS AND HAZARDOUS SUBSTANCE which should be handled by trained staff only.

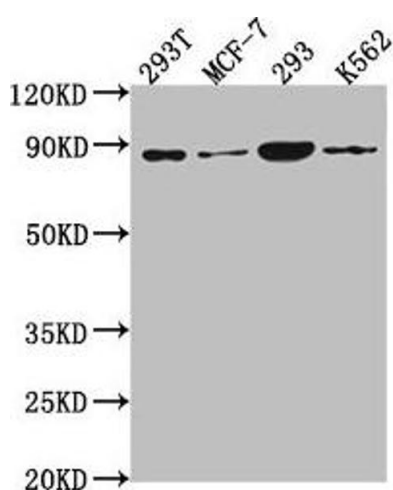
Storage: -20 °C,-80 °C

Storage Comment: Upon receipt, store at -20°C or -80°C. Avoid repeated freeze.



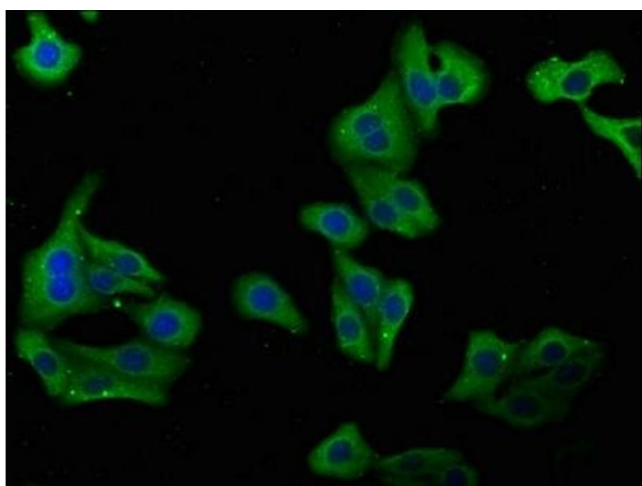
### Immunohistochemistry

**Image 1.** IHC image of ABIN7149404 diluted at 1:300 and staining in paraffin-embedded human liver tissue performed on a Leica Bond™ system. After dewaxing and hydration, antigen retrieval was mediated by high pressure in a citrate buffer (pH 6.0). Section was blocked with 10 % normal goat serum 30 min at RT. Then primary antibody (1 % BSA) was incubated at 4 °C overnight. The primary is detected by a biotinylated secondary antibody and visualized using an HRP conjugated SP system.



### Western Blotting

**Image 2.** Western Blot Positive WB detected in: 293T whole cell lysate, MCF-7 whole cell lysate, 293 whole cell lysate, K562 whole cell lysate All lanes: P0C869 antibody at 1:2000 Secondary Goat polyclonal to rabbit IgG at 1/50000 dilution Predicted band size: 88, 101, 55, 115 kDa Observed band size: 88 kDa



### Immunofluorescence

**Image 3.** Immunofluorescence staining of HepG2 cells with ABIN7149404 at 1:100, counter-stained with DAPI. The cells were fixed in 4 % formaldehyde, permeabilized using 0.2 % Triton X-100 and blocked in 10 % normal Goat Serum. The cells were then incubated with the antibody overnight at 4 °C. The secondary antibody was Alexa Fluor 488-conjugated AffiniPure Goat Anti-Rabbit IgG(H+L).