

Datasheet for ABIN7149412  
**anti-PLA2G4C antibody (AA 1-189)**



[Go to Product page](#)

3 Images

## Overview

Quantity:	100 µL
Target:	PLA2G4C
Binding Specificity:	AA 1-189
Reactivity:	Human
Host:	Rabbit
Clonality:	Polyclonal
Conjugate:	This PLA2G4C antibody is un-conjugated
Application:	Western Blotting (WB), ELISA, Immunohistochemistry (IHC)

## Product Details

Immunogen:	Recombinant Human Cytosolic phospholipase A2 gamma protein (1-189AA)
Isotype:	IgG
Cross-Reactivity:	Human, Mouse
Purification:	Antigen Affinity Purified

## Target Details

Target:	PLA2G4C
Alternative Name:	PLA2G4C ( <a href="#">PLA2G4C Products</a> )
Background:	Background: Has a preference for arachidonic acid at the sn-2 position of phosphatidylcholine as compared with palmitic acid.

## Target Details

Aliases: cPLA2 gamma antibody, Cytosolic phospholipase A2 gamma antibody, EC 3.1.1.4 antibody, PA24C\_HUMAN antibody, Phospholipase A2 group IVC antibody, PLA2G4C antibody

UniProt: [Q9UP65](#)

Pathways: [Inositol Metabolic Process](#), [VEGF Signaling](#)

## Application Details

Application Notes: Recommended dilution: WB:1:1000-1:5000, IHC:1:20-1:200,

Restrictions: For Research Use only

## Handling

Format: Liquid

Buffer: PBS with 0.02 % sodium azide, 50 % glycerol, pH 7.3.

Preservative: Sodium azide

Precaution of Use: This product contains Sodium azide: a POISONOUS AND HAZARDOUS SUBSTANCE which should be handled by trained staff only.

Storage: -20 °C,-80 °C

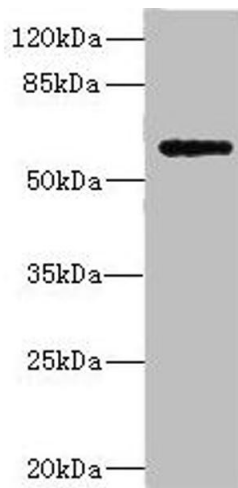
Storage Comment: Upon receipt, store at -20°C or -80°C. Avoid repeated freeze.

## Images



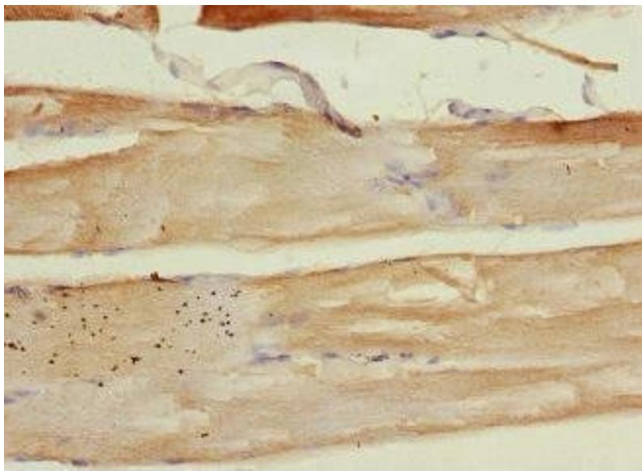
### Immunohistochemistry

**Image 1.** Immunohistochemistry of paraffin-embedded human heart tissue using ABIN7149412 at dilution of 1:100



### Western Blotting

**Image 2.** Western blot All lanes: COX10 antibody at 5.84  $\mu$ g/mL + Mouse heart tissue Secondary Goat polyclonal to rabbit IgG at 1/10000 dilution Predicted band size: 61, 60, 63 kDa Observed band size: 61 kDa



### Immunohistochemistry

**Image 3.** Immunohistochemistry of paraffin-embedded human skeletal muscle tissue using ABIN7149412 at dilution of 1:100