

Datasheet for ABIN7149418  
**anti-PLA2G4F antibody (AA 74-299)**[Go to Product page](#)

## 1 Image

## Overview

Quantity:	100 µL
Target:	PLA2G4F
Binding Specificity:	AA 74-299
Reactivity:	Human
Host:	Rabbit
Clonality:	Polyclonal
Conjugate:	This PLA2G4F antibody is un-conjugated
Application:	ELISA, Immunohistochemistry (IHC)

## Product Details

Immunogen:	Recombinant Human Cytosolic phospholipase A2 zeta protein (74-299AA)
Isotype:	IgG
Cross-Reactivity:	Human
Purification:	Antigen Affinity Purified

## Target Details

Target:	PLA2G4F
Alternative Name:	PLA2G4F ( <a href="#">PLA2G4F Products</a> )
Background:	Background: Calcium-dependent phospholipase A2 that selectively hydrolyzes glycerophospholipids in the sn-2 position. Has higher enzyme activity for

## Target Details

phosphatidylethanolamine than phosphatidylcholine (By similarity).

Aliases: cPLA2-zeta antibody, Cytosolic phospholipase A2 zeta antibody, DKFZp666G192 antibody, DKFZp781B229 antibody, PA24F\_HUMAN antibody, Phospholipase A2 group IVF antibody, Pla2g4f antibody, PLA2G4FZ antibody

UniProt: [Q68DD2](#)

## Application Details

Application Notes: Recommended dilution: IHC:1:20-1:200,

Restrictions: For Research Use only

## Handling

Format: Liquid

Buffer: Preservative: 0.03 % Proclin 300  
Constituents: 50 % Glycerol, 0.01M PBS, pH 7.4

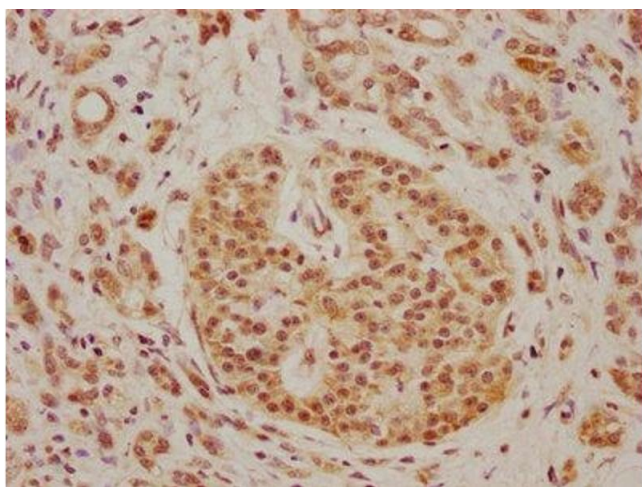
Preservative: ProClin

Precaution of Use: This product contains ProClin: a POISONOUS AND HAZARDOUS SUBSTANCE which should be handled by trained staff only.

Storage: -20 °C,-80 °C

Storage Comment: Upon receipt, store at -20°C or -80°C. Avoid repeated freeze.

## Images



### Immunohistochemistry

**Image 1.** IHC image of ABIN7149418 diluted at 1:100 and staining in paraffin-embedded human pancreatic cancer performed on a Leica Bond™ system. After dewaxing and hydration, antigen retrieval was mediated by high pressure in a citrate buffer (pH 6.0). Section was blocked with 10 % normal goat serum 30 min at RT. Then primary antibody (1 % BSA) was incubated at 4 °C overnight. The primary is detected by a biotinylated secondary antibody and visualized using an HRP conjugated SP system.