

Datasheet for ABIN7149430
anti-CTLA4 antibody (AA 37-162)[Go to Product page](#)

4 Images

Overview

Quantity:	100 µL
Target:	CTLA4
Binding Specificity:	AA 37-162
Reactivity:	Human
Host:	Mouse
Clonality:	Monoclonal
Conjugate:	This CTLA4 antibody is un-conjugated
Application:	Western Blotting (WB), ELISA, Immunohistochemistry (IHC)

Product Details

Immunogen:	Recombinant Human Cytotoxic T-lymphocyte protein 4 protein (37-162AA)
Clone:	9D2E9
Isotype:	IgG1, IgG1 kappa
Cross-Reactivity:	Human
Purification:	Protein G purified

Target Details

Target:	CTLA4
Alternative Name:	CTLA4 (CTLA4 Products)
Background:	ALPS5 antibody, CD 152 antibody, CD antibody, CD152 antibody, CD152 antigen antibody,

Target Details

CD152 isoform antibody, Celiac disease 3 antibody, CELIAC3 antibody, CTLA 4 antibody, CTLA-4 antibody, CTLA4 antibody, CTLA4_HUMAN antibody, Cytotoxic T cell associated 4 antibody, Cytotoxic T lymphocyte antigen 4 antibody, Cytotoxic T lymphocyte associated 4 antibody, Cytotoxic T lymphocyte associated 4, soluble isoform, included antibody, Cytotoxic T lymphocyte associated antigen 4 antibody, Cytotoxic T lymphocyte associated antigen 4 short spliced form antibody, Cytotoxic T lymphocyte associated protein 4 antibody, Cytotoxic T lymphocyte associated serine esterase 4 antibody, Cytotoxic T lymphocyte protein 4 antibody, Cytotoxic T-lymphocyte protein 4 antibody, Cytotoxic T-lymphocyte-associated antigen 4 antibody, GRD4 antibody, GSE antibody, ICOS antibody, IDDM12 antibody, insulin-dependent diabetes mellitus 12 antibody, Ligand and transmembrane spliced cytotoxic T lymphocyte associated antigen 4 antibody, OTTHUMP00000216623 antibody

UniProt: [P16410](#)

Pathways: [Cancer Immune Checkpoints](#)

Application Details

Application Notes: Recommended dilution: WB: 1:1000-1:5000, IHC: 1:200-1:1000,

Restrictions: For Research Use only

Handling

Format: Liquid

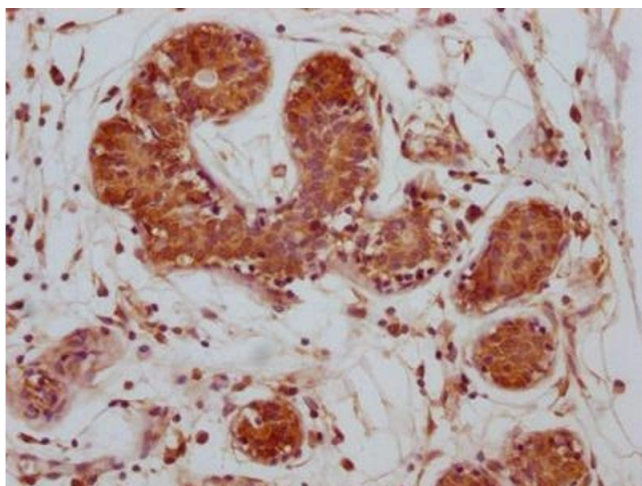
Buffer: Preservative: 0.03 % Proclin 300
Constituents: 50 % Glycerol, 0.01M PBS, PH 7.4

Preservative: ProClin

Precaution of Use: This product contains ProClin: a POISONOUS AND HAZARDOUS SUBSTANCE which should be handled by trained staff only.

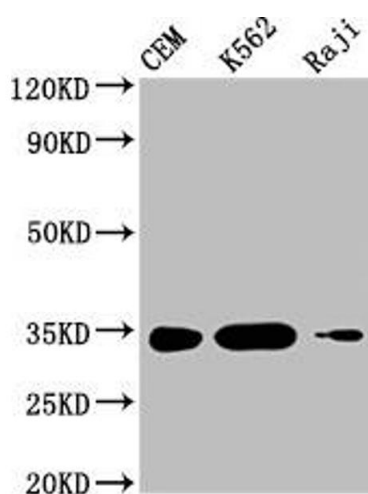
Storage: -20 °C, -80 °C

Storage Comment: Upon receipt, store at -20°C or -80°C. Avoid repeated freeze.



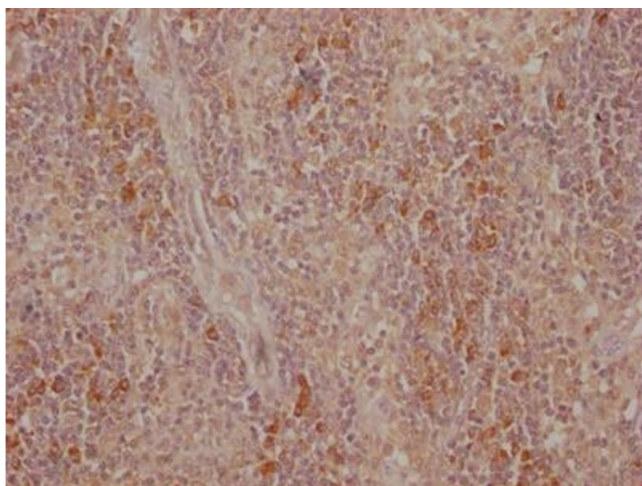
Immunohistochemistry

Image 1. IHC image of ABIN7149430 diluted at 1:500 and staining in paraffin-embedded human breast cancer performed on a Leica Bond™ system. After dewaxing and hydration, antigen retrieval was mediated by high pressure in a citrate buffer (pH 6.0). Section was blocked with 10 % normal goat serum 30 min at 37 °C Then primary antibody (1 % BSA) was incubated at 4 °C overnight. The primary is detected by a Goat anti-Mouse IgG labeled by HRP and visualized using 0.05 % DAB.



Western Blotting

Image 2. Western Blot Positive WB detected in: CEM whole cell lysate, K562 whole cell lysate, Raji whole cell lysate All lanes: CTLA4 antibody at 1:1000 Secondary Goat polyclonal to mouse IgG at 1/50000 dilution Predicted band size: 25, 7, 9, 20 kDa Observed band size: 34 kDa Exposure time: 5 min



Immunohistochemistry

Image 3. IHC image of ABIN7149430 diluted at 1:500 and staining in paraffin-embedded human tonsil tissue performed on a Leica Bond™ system. After dewaxing and hydration, antigen retrieval was mediated by high pressure in a citrate buffer (pH 6.0). Section was blocked with 10 % normal goat serum 30 min at 37 °C Then primary antibody (1 % BSA) was incubated at 4 °C overnight. The primary is detected by a Goat anti-Mouse IgG labeled by HRP and visualized using 0.05 % DAB.

Please check the [product details page](#) for more images. Overall 4 images are available for ABIN7149430.