



Datasheet for ABIN7149492
anti-DACT3 antibody (AA 1-160)



[Go to Product page](#)

2 Images

Overview

| | |
|----------------------|--------------------------------------|
| Quantity: | 100 µL |
| Target: | DACT3 |
| Binding Specificity: | AA 1-160 |
| Reactivity: | Human |
| Host: | Rabbit |
| Clonality: | Polyclonal |
| Conjugate: | This DACT3 antibody is un-conjugated |
| Application: | ELISA, Immunohistochemistry (IHC) |

Product Details

| | |
|-------------------|--|
| Immunogen: | Recombinant Human Dapper homolog 3 protein (1-160AA) |
| Isotype: | IgG |
| Cross-Reactivity: | Human |
| Purification: | Antigen Affinity Purified |

Target Details

| | |
|-------------------|---|
| Target: | DACT3 |
| Alternative Name: | DACT3 (DACT3 Products) |
| Background: | Background: May be involved in regulation of intracellular signaling pathways during development. Specifically thought to play a role in canonical and/or non-canonical Wnt |

Target Details

signaling pathways through interaction with DSH (Dishevelled) family proteins.

Aliases: Antagonist of beta-catenin Dapper homolog 3 antibody, Arginine rich region 1 antibody, Arginine rich region 1 protein antibody, Arginine-rich region 1 protein antibody, Dact3 antibody, DACT3_HUMAN antibody, Dapper antagonist of beta catenin 3 antibody, Dapper antagonist of beta catenin homolog 3 (Xenopus laevis) antibody, Dapper homolog 3 antibody, Dapper3 antibody, Dpr3 antibody, RRR1 antibody, Thymus expressed gene 3 like antibody

UniProt: [Q96B18](#)

Application Details

Application Notes: Recommended dilution: IHC:1:20-1:200,

Restrictions: For Research Use only

Handling

Format: Liquid

Buffer: PBS with 0.02 % sodium azide, 50 % glycerol, pH 7.3.

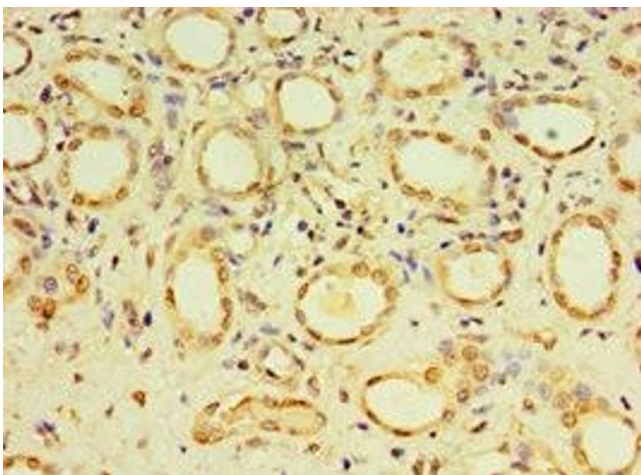
Preservative: Sodium azide

Precaution of Use: This product contains Sodium azide: a POISONOUS AND HAZARDOUS SUBSTANCE which should be handled by trained staff only.

Storage: -20 °C,-80 °C

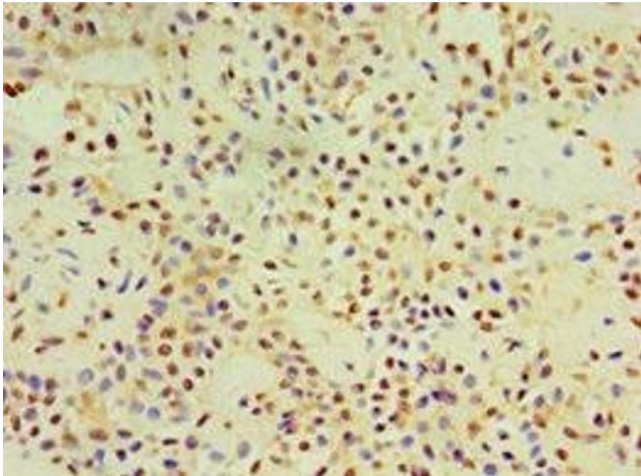
Storage Comment: Upon receipt, store at -20°C or -80°C. Avoid repeated freeze.

Images



Immunohistochemistry

Image 1. Immunohistochemistry of paraffin-embedded human kidney tissue using ABIN7149492 at dilution of 1:100



Immunohistochemistry

Image 2. Immunohistochemistry of paraffin-embedded human breast cancer using ABIN7149492 at dilution of 1:100