

Datasheet for ABIN7149505
anti-APPL2 antibody (AA 399-512)

2 Images

[Go to Product page](#)

Overview

Quantity:	100 µg
Target:	APPL2
Binding Specificity:	AA 399-512
Reactivity:	Human
Host:	Rabbit
Clonality:	Polyclonal
Conjugate:	This APPL2 antibody is un-conjugated
Application:	ELISA, Immunofluorescence (IF), Immunohistochemistry (IHC)

Product Details

Immunogen:	Recombinant Human DCC-interacting protein 13-beta protein (399-512AA)
Isotype:	IgG
Cross-Reactivity:	Human
Purification:	>95%, Protein G purified

Target Details

Target:	APPL2
Alternative Name:	APPL2 (APPL2 Products)
Background:	Background: Required for the regulation of cell proliferation in response to extracellular signals mediated by an early endosomal compartment. Links Rab5 to nuclear signal transduction.

Target Details

Aliases: Adapter protein containing PH domain antibody, Adapter protein containing PH domain PTB domain and leucine zipper motif 2 antibody, adaptor protein, phosphotyrosine interaction, PH domain and leucine zipper containing 2 antibody, APLP2 antibody, Appl2 antibody, DCC interacting protein 13 beta antibody, DCC-interacting protein 13-beta antibody, Dip13 beta antibody, Dip13-beta antibody, DP13B_HUMAN antibody, PTB domain and leucine zipper motif 2 antibody

UniProt: [Q8NEU8](#)

Application Details

Application Notes: Recommended dilution: IHC:1:500-1:1000, IF:1:200-1:500,

Restrictions: For Research Use only

Handling

Format: Liquid

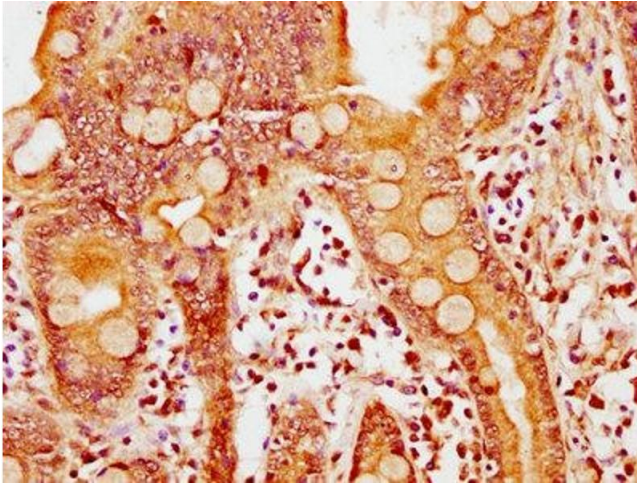
Buffer: Preservative: 0.03 % Proclin 300
Constituents: 50 % Glycerol, 0.01M PBS, pH 7.4

Preservative: ProClin

Precaution of Use: This product contains ProClin: a POISONOUS AND HAZARDOUS SUBSTANCE which should be handled by trained staff only.

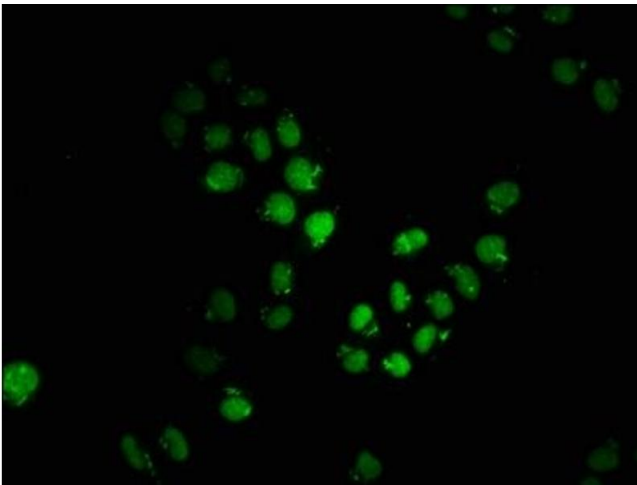
Storage: -20 °C, -80 °C

Storage Comment: Upon receipt, store at -20°C or -80°C. Avoid repeated freeze.



Immunohistochemistry

Image 1. IHC image of ABIN7149505 diluted at 1:600 and staining in paraffin-embedded human small intestine tissue performed on a Leica Bond™ system. After dewaxing and hydration, antigen retrieval was mediated by high pressure in a citrate buffer (pH 6.0). Section was blocked with 10% normal goat serum 30min at RT. Then primary antibody (1% BSA) was incubated at 4°C overnight. The primary is detected by a biotinylated secondary antibody and visualized using an HRP conjugated SP system.



Immunofluorescence

Image 2. Immunofluorescence staining of HeLa cells with ABIN7149505 at 1:200, counter-stained with DAPI. The cells were fixed in 4% formaldehyde, permeabilized using 0.2% Triton X-100 and blocked in 10% normal Goat Serum. The cells were then incubated with the antibody overnight at 4°C. The secondary antibody was Alexa Fluor 488-conjugated AffiniPure Goat Anti-Rabbit IgG(H+L).