

Datasheet for ABIN7149579
anti-DOCK1 antibody (AA 1676-1865)

3 Images

[Go to Product page](#)

Overview

Quantity:	100 µg
Target:	DOCK1
Binding Specificity:	AA 1676-1865
Reactivity:	Human
Host:	Rabbit
Clonality:	Polyclonal
Conjugate:	This DOCK1 antibody is un-conjugated
Application:	ELISA, Immunohistochemistry (IHC), Immunofluorescence (IF)

Product Details

Immunogen:	Recombinant Human Dedicator of cytokinesis protein 1 protein (1676-1865AA)
Isotype:	IgG
Cross-Reactivity:	Human
Purification:	>95%, Protein G purified

Target Details

Target:	DOCK1
Alternative Name:	DOCK1 (DOCK1 Products)
Background:	Background: Involved in cytoskeletal rearrangements required for phagocytosis of apoptotic cells and cell motility. Along with DOCK1, mediates CRK/CRKL regulation of epithelial and

Target Details

endothelial cell spreading and migration on type IV collagen (PubMed:19004829). Functions as a guanine nucleotide exchange factor (GEF), which activates Rac Rho small GTPases by exchanging bound GDP for free GTP. Its GEF activity may be enhanced by ELMO1 (PubMed:8657152).

Aliases: 180 kDa protein downstream of CRK antibody, Ced5 antibody, Dedicator of Cytokinesis 1 antibody, Dedicator of cytokinesis protein 1 antibody, DOCK 1 antibody, DOCK 180 antibody, DOCK1 antibody, DOCK1_HUMAN antibody, DOCK180 antibody

UniProt: [Q14185](#)

Pathways: [Signaling of Hepatocyte Growth Factor Receptor](#)

Application Details

Application Notes: Recommended dilution: IHC:1:20-1:200, IF:1:50-1:200,

Restrictions: For Research Use only

Handling

Format: Liquid

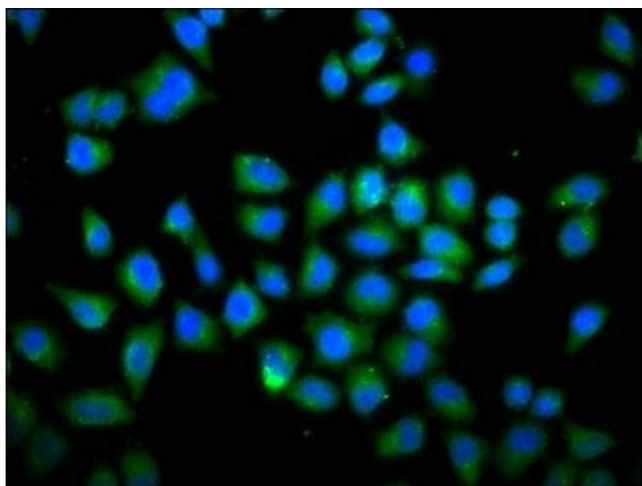
Buffer: Preservative: 0.03 % Proclin 300
Constituents: 50 % Glycerol, 0.01M PBS, pH 7.4

Preservative: ProClin

Precaution of Use: This product contains ProClin: a POISONOUS AND HAZARDOUS SUBSTANCE which should be handled by trained staff only.

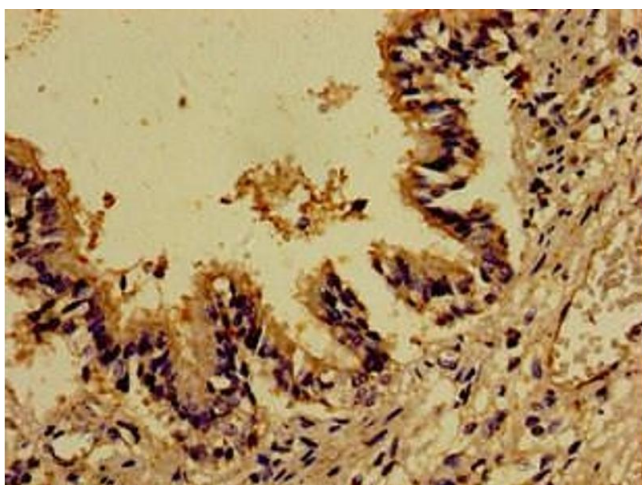
Storage: -20 °C, -80 °C

Storage Comment: Upon receipt, store at -20°C or -80°C. Avoid repeated freeze.



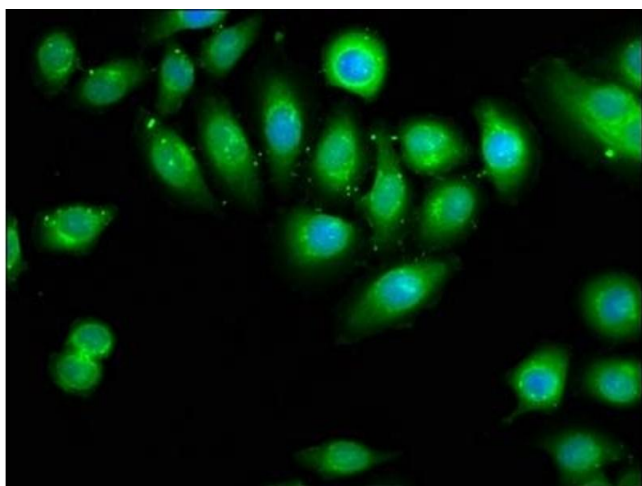
Immunofluorescence

Image 1. Immunofluorescence staining of HeLa cells with ABIN7149579 at 1:66, counter-stained with DAPI. The cells were fixed in 4% formaldehyde, permeabilized using 0.2% Triton X-100 and blocked in 10% normal Goat Serum. The cells were then incubated with the antibody overnight at 4°C. The secondary antibody was Alexa Fluor 488-conjugated AffiniPure Goat Anti-Rabbit IgG(H+L).



Immunohistochemistry

Image 2. Immunohistochemistry of paraffin-embedded human lung tissue using ABIN7149579 at dilution of 1:100



Immunofluorescence

Image 3. Immunofluorescence staining of A549 cells with ABIN7149579 at 1:66, counter-stained with DAPI. The cells were fixed in 4% formaldehyde, permeabilized using 0.2% Triton X-100 and blocked in 10% normal Goat Serum. The cells were then incubated with the antibody overnight at 4°C. The secondary antibody was Alexa Fluor 488-conjugated AffiniPure Goat Anti-Rabbit IgG(H+L).