

Datasheet for ABIN7149587
anti-DOCK3 antibody (AA 1630-1934)[Go to Product page](#)

2 Images

Overview

Quantity:	100 µg
Target:	DOCK3
Binding Specificity:	AA 1630-1934
Reactivity:	Human
Host:	Rabbit
Clonality:	Polyclonal
Conjugate:	This DOCK3 antibody is un-conjugated
Application:	ELISA, Immunohistochemistry (IHC), Immunofluorescence (IF)

Product Details

Immunogen:	Recombinant Human Dedicator of cytokinesis protein 3 protein (1630-1934AA)
Isotype:	IgG
Cross-Reactivity:	Human
Purification:	>95%, Protein G purified

Target Details

Target:	DOCK3
Alternative Name:	DOCK3 (DOCK3 Products)
Background:	Background: Potential guanine nucleotide exchange factor (GEF). GEF proteins activate some small GTPases by exchanging bound GDP for free GTP. Its interaction with presenilin proteins

Target Details

as well as its ability to stimulate Tau/MAPT phosphorylation suggest that it may be involved in Alzheimer disease. Ectopic expression in nerve cells decreases the secretion of beta-amyloid APBA1 protein and lowers the rate of cell-substratum adhesion, suggesting that it may affect the function of some small GTPase involved in the regulation of actin cytoskeleton or cell adhesion receptors (By similarity).

Aliases: DOCK3 antibody, KIAA0299 antibody, MOCADedicator of cytokinesis protein 3 antibody, Modifier of cell adhesion antibody, Presenilin-binding protein antibody, PBP antibody

UniProt: [Q8IZD9](#)

Application Details

Application Notes: Recommended dilution: IHC:1:20-1:200, IF:1:50-1:200,

Restrictions: For Research Use only

Handling

Format: Liquid

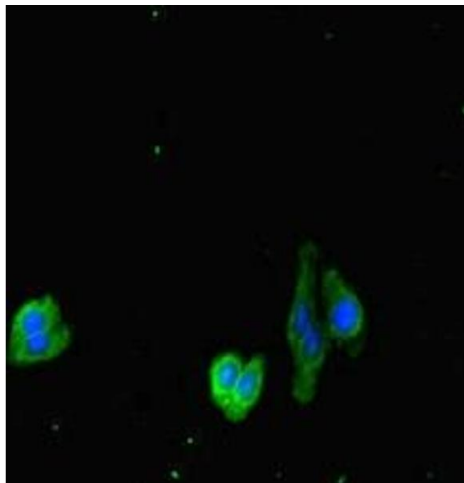
Buffer: Preservative: 0.03 % Proclin 300
Constituents: 50 % Glycerol, 0.01M PBS, PH 7.4

Preservative: ProClin

Precaution of Use: This product contains ProClin: a POISONOUS AND HAZARDOUS SUBSTANCE which should be handled by trained staff only.

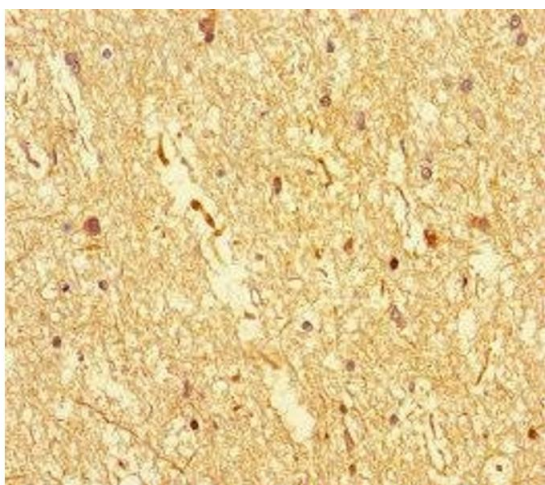
Storage: -20 °C,-80 °C

Storage Comment: Upon receipt, store at -20°C or -80°C. Avoid repeated freeze.



Immunofluorescence

Image 1. Immunofluorescent analysis of HepG2 cells using ABIN7149587 at dilution of 1:100 and Alexa Fluor 488-conjugated AffiniPure Goat Anti-Rabbit IgG(H+L)



Immunohistochemistry

Image 2. Immunohistochemistry of paraffin-embedded human brain tissue using ABIN7149587 at dilution of 1:100