

Datasheet for ABIN7149595  
**anti-DOCK6 antibody (AA 499-616)**[Go to Product page](#)

## 1 Image

## Overview

Quantity:	100 µg
Target:	DOCK6
Binding Specificity:	AA 499-616
Reactivity:	Human
Host:	Rabbit
Clonality:	Polyclonal
Conjugate:	This DOCK6 antibody is un-conjugated
Application:	ELISA, Immunohistochemistry (IHC)

## Product Details

Immunogen:	Recombinant Human Dedicator of cytokinesis protein 6 protein (499-616AA)
Isotype:	IgG
Cross-Reactivity:	Human
Purification:	>95%, Protein G purified

## Target Details

Target:	DOCK6
Alternative Name:	DOCK6 ( <a href="#">DOCK6 Products</a> )
Background:	Background: Acts as guanine nucleotide exchange factor (GEF) for CDC42 and RAC1 small GTPases. Through its activation of CDC42 and RAC1, may regulate neurite outgrowth (By

## Target Details

similarity).

Aliases: Deducator of cytokinesis protein 6 antibody, Dock6 antibody, DOCK6\_HUMAN antibody

UniProt: [Q96HP0](#)

## Application Details

Application Notes: Recommended dilution: IHC:1:20-1:200,

Restrictions: For Research Use only

## Handling

Format: Liquid

Buffer: Preservative: 0.03 % Proclin 300  
Constituents: 50 % Glycerol, 0.01M PBS, PH 7.4

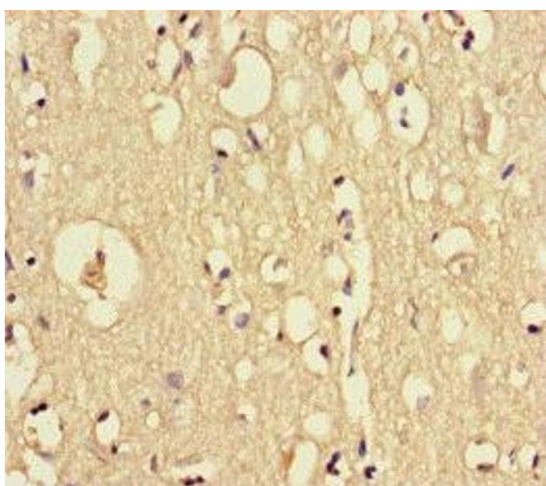
Preservative: ProClin

Precaution of Use: This product contains ProClin: a POISONOUS AND HAZARDOUS SUBSTANCE which should be handled by trained staff only.

Storage: -20 °C,-80 °C

Storage Comment: Upon receipt, store at -20°C or -80°C. Avoid repeated freeze.

## Images



### Immunohistochemistry

**Image 1.** Immunohistochemistry of paraffin-embedded human brain tissue using ABIN7149595 at dilution of 1:100