

Datasheet for ABIN7149618  
**anti-DHRS2 antibody (AA 1-300)**[Go to Product page](#)

## 1 Image

## Overview

Quantity:	100 µL
Target:	DHRS2
Binding Specificity:	AA 1-300
Reactivity:	Human
Host:	Rabbit
Clonality:	Polyclonal
Conjugate:	This DHRS2 antibody is un-conjugated
Application:	ELISA, Immunohistochemistry (IHC)

## Product Details

Immunogen:	Recombinant Human Dehydrogenase/reductase SDR family member 2, mitochondrial protein (1-300AA)
Isotype:	IgG
Cross-Reactivity:	Human
Purification:	Antigen Affinity Purified

## Target Details

Target:	DHRS2
Alternative Name:	DHRS2 ( <a href="#">DHRS2 Products</a> )
Background:	Background: Displays NADPH-dependent dicarbonyl reductase activity in vitro with 3,4-

## Target Details

Hexanedione, 2,3-Heptanedione and 1-Phenyl-1,2-propanedione as substrates. No reductase activity is displayed in vitro with steroids, retinoids and sugars as substrates. Attenuates MDM2-mediated p53/TP53 degradation, leading to p53/TP53 stabilization and increased transcription activity, resulting in the accumulation of MDM2 and CDKN1A/p21.

Aliases: DHRS2 antibody, SDR25C1 antibody, Dehydrogenase/reductase SDR family member 2 antibody, mitochondrial antibody, EC 1.1.1.- antibody, Dicarbonyl reductase HEP27 antibody, Protein D antibody, Short chain dehydrogenase/reductase family 25C member 1 antibody

UniProt: [Q13268](#)

Pathways: [C21-Steroid Hormone Metabolic Process](#)

## Application Details

Application Notes: Recommended dilution: IHC:1:20-1:200,

Restrictions: For Research Use only

## Handling

Format: Liquid

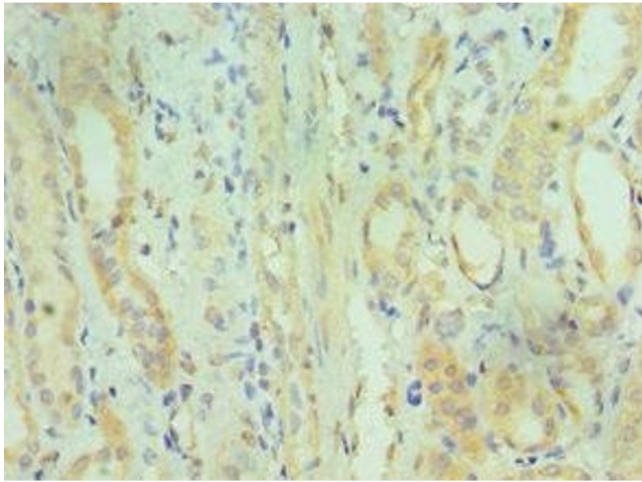
Buffer: PBS with 0.02 % sodium azide, 50 % glycerol, pH 7.3.

Preservative: Sodium azide

Precaution of Use: This product contains Sodium azide: a POISONOUS AND HAZARDOUS SUBSTANCE which should be handled by trained staff only.

Storage: -20 °C,-80 °C

Storage Comment: Upon receipt, store at -20°C or -80°C. Avoid repeated freeze.



#### Immunohistochemistry

**Image 1.** Immunohistochemistry of paraffin-embedded human kidney tissue using ABIN7149618 at dilution of 1:100