



[Go to Product page](#)

Datasheet for ABIN7149635

anti-CXORF36 antibody (AA 311-405)

3 Images

Overview

Quantity:	100 µg
Target:	CXORF36
Binding Specificity:	AA 311-405
Reactivity:	Human
Host:	Rabbit
Clonality:	Polyclonal
Conjugate:	This CXORF36 antibody is un-conjugated
Application:	Western Blotting (WB), ELISA, Immunohistochemistry (IHC)

Product Details

Immunogen:	Recombinant Human Deleted in autism-related protein 1 protein (311-405AA)
Isotype:	IgG
Cross-Reactivity:	Human
Purification:	>95%, Protein G purified

Target Details

Target:	CXORF36
Alternative Name:	CXorf36 (CXORF36 Products)
Background:	Background: regulation of signal transduction Aliases: DIPK2B antibody, CXorf36 antibody, DIA1R antibody, UNQ1862/PRO3743Divergent

Target Details

protein kinase domain 2B antibody, Deleted in autism-related protein 1 antibody

UniProt: [Q9H7Y0](#)

Application Details

Application Notes: Recommended dilution: WB:1:500-1:5000, IHC:1:200-1:500,

Restrictions: For Research Use only

Handling

Format: Liquid

Buffer: Preservative: 0.03 % Proclin 300
Constituents: 50 % Glycerol, 0.01M PBS, pH 7.4

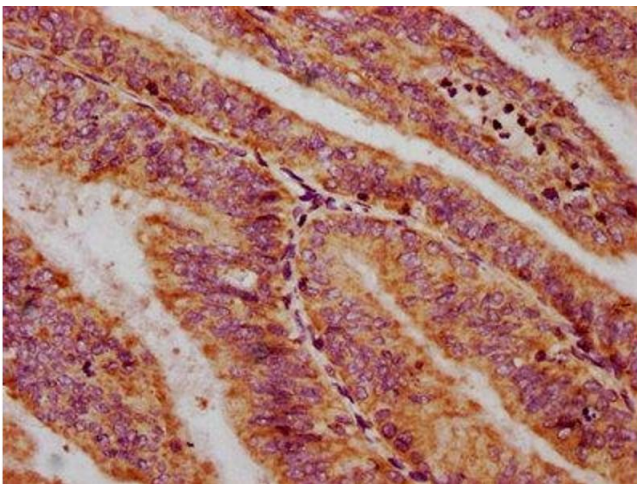
Preservative: ProClin

Precaution of Use: This product contains ProClin: a POISONOUS AND HAZARDOUS SUBSTANCE which should be handled by trained staff only.

Storage: -20 °C,-80 °C

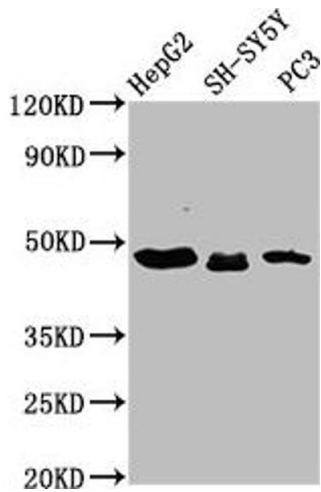
Storage Comment: Upon receipt, store at -20°C or -80°C. Avoid repeated freeze.

Images



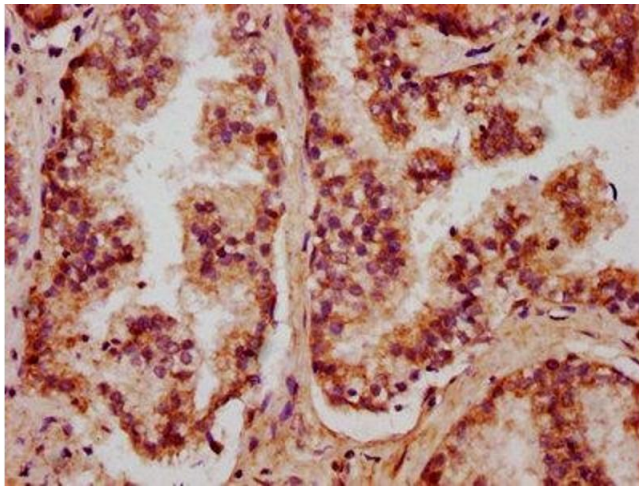
Immunohistochemistry

Image 1. IHC image of ABIN7149635 diluted at 1:400 and staining in paraffin-embedded human endometrial cancer performed on a Leica Bond™ system. After dewaxing and hydration, antigen retrieval was mediated by high pressure in a citrate buffer (pH 6.0). Section was blocked with 10% normal goat serum 30min at RT. Then primary antibody (1% BSA) was incubated at 4°C overnight. The primary is detected by a biotinylated secondary antibody and visualized using an HRP conjugated SP system.



Western Blotting

Image 2. Western Blot Positive WB detected in: HepG2 whole cell lysate, SH-SY5Y whole cell lysate, PC-3 whole cell lysate All lanes: CXorf36 antibody at 3.9 µg/mL Secondary Goat polyclonal to rabbit IgG at 1/50000 dilution Predicted band size: 49, 21 kDa Observed band size: 49 kDa



Immunohistochemistry

Image 3. IHC image of ABIN7149635 diluted at 1:400 and staining in paraffin-embedded human prostate cancer performed on a Leica Bond™ system. After dewaxing and hydration, antigen retrieval was mediated by high pressure in a citrate buffer (pH 6.0). Section was blocked with 10% normal goat serum 30min at RT. Then primary antibody (1% BSA) was incubated at 4°C overnight. The primary is detected by a biotinylated secondary antibody and visualized using an HRP conjugated SP system.