



[Go to Product page](#)

Datasheet for ABIN7149648

anti-ALDH4A1 antibody (AA 354-563)

3 Images

Overview

Quantity:	100 µL
Target:	ALDH4A1
Binding Specificity:	AA 354-563
Reactivity:	Human
Host:	Rabbit
Clonality:	Polyclonal
Conjugate:	This ALDH4A1 antibody is un-conjugated
Application:	Western Blotting (WB), Immunohistochemistry (IHC), ELISA

Product Details

Immunogen:	Recombinant Human Delta-1-pyrroline-5-carboxylate dehydrogenase, mitochondrial protein (354-563AA)
Isotype:	IgG
Cross-Reactivity:	Human
Purification:	Antigen Affinity Purified

Target Details

Target:	ALDH4A1
Alternative Name:	ALDH4A1 (ALDH4A1 Products)
Background:	Background: Irreversible conversion of delta-1-pyrroline-5-carboxylate (P5C), derived either from

Target Details

proline or ornithine, to glutamate. This is a necessary step in the pathway interconnecting the urea and tricarboxylic acid cycles. The preferred substrate is glutamic gamma-semialdehyde, other substrates include succinic, glutaric and adipic semialdehydes.

Aliases: AL4A1_HUMAN antibody, aldehyde dehydrogenase 4 antibody, aldehyde dehydrogenase 4 family, member A1 antibody, Aldehyde dehydrogenase family 4 member A1 antibody, Aldehyde dehydrogenase, family 4, subfamily A, member 1 antibody, ALDH4 antibody, aldh4a1 antibody, Delta 1 pyrroline 5 carboxylate dehydrogenase, mitochondrial antibody, Delta-1-pyrroline-5-carboxylate dehydrogenase antibody, L-glutamate gamma-semialdehyde dehydrogenase antibody, mitochondrial antibody, mitochondrial delta-1-pyrroline 5-carboxylate dehydrogenase antibody, P5C dehydrogenase antibody, P5CD antibody, P5CDh antibody, P5CDhL antibody, P5CDhS antibody, Pyrroline-5-carboxylate dehydrogenase antibody, RP11 128M10.1 antibody

UniProt: [P30038](#)

Pathways: [Monocarboxylic Acid Catabolic Process](#)

Application Details

Application Notes: Recommended dilution: WB:1:500-1:2000, IHC:1:20-1:200,

Restrictions: For Research Use only

Handling

Format: Liquid

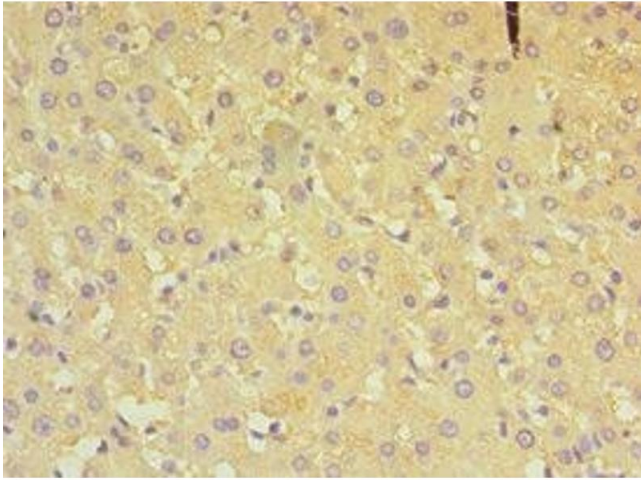
Buffer: PBS with 0.02 % sodium azide, 50 % glycerol, pH 7.3.

Preservative: Sodium azide

Precaution of Use: This product contains Sodium azide: a POISONOUS AND HAZARDOUS SUBSTANCE which should be handled by trained staff only.

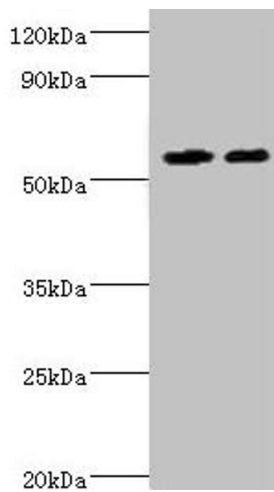
Storage: -20 °C,-80 °C

Storage Comment: Upon receipt, store at -20°C or -80°C. Avoid repeated freeze.



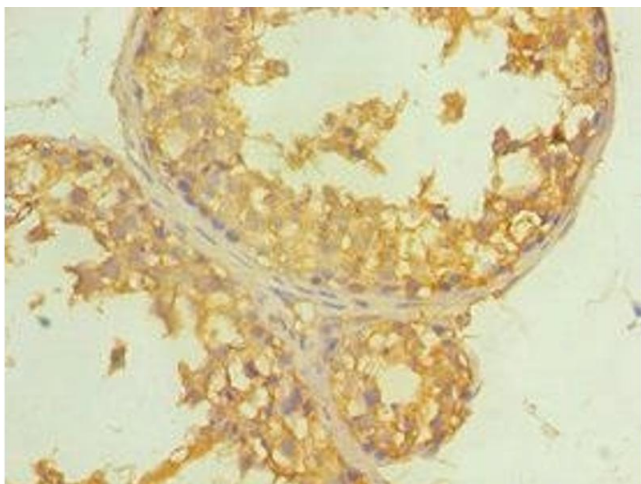
Immunohistochemistry

Image 1. Immunohistochemistry of paraffin-embedded human liver tissue using ABIN7149648 at dilution of 1:100



Western Blotting

Image 2. Western blot All lanes: ALDH4A1 antibody at 13 μ g/mL Lane 1: K562 whole cell lysate Lane 2: 293T whole cell lysate Secondary Goat polyclonal to rabbit IgG at 1/10000 dilution Predicted band size: 62, 56, 57 kDa Observed band size: 62 kDa



Immunohistochemistry

Image 3. Immunohistochemistry of paraffin-embedded human testis tissue using ABIN7149648 at dilution of 1:100