

Datasheet for ABIN7149649
anti-DLL3 antibody (AA 27-492)[Go to Product page](#)

2 Images

Overview

Quantity:	100 µg
Target:	DLL3
Binding Specificity:	AA 27-492
Reactivity:	Human
Host:	Rabbit
Clonality:	Polyclonal
Conjugate:	This DLL3 antibody is un-conjugated
Application:	ELISA, Immunohistochemistry (IHC)

Product Details

Immunogen:	Recombinant Human Delta-like protein 3 protein (27-492AA)
Isotype:	IgG
Cross-Reactivity:	Human
Purification:	>95%, Protein G purified

Target Details

Target:	DLL3
Alternative Name:	DLL3 (DLL3 Products)
Background:	Background: Inhibits primary neurogenesis. May be required to divert neurons along a specific differentiation pathway. Plays a role in the formation of somite boundaries during segmentation

Target Details

of the paraxial mesoderm.

Aliases: Delta Drosophila like 3 antibody, Delta like 3 Drosophila antibody, Delta like 3 homolog Drosophila antibody, Delta like 3 protein antibody, Delta like protein 3 precursor antibody, Delta-like protein 3 antibody, Delta3 antibody, Dll3 antibody, DLL3_HUMAN antibody, Drosophila Delta homolog 3 antibody, SCD01 antibody, SCOD1 antibody, Spondylocostal dysostosis autosomal recessive antibody

UniProt: [Q9NYJ7](#)

Pathways: [Notch Signaling](#)

Application Details

Application Notes: Recommended dilution: IHC:1:500-1:1000,

Restrictions: For Research Use only

Handling

Format: Liquid

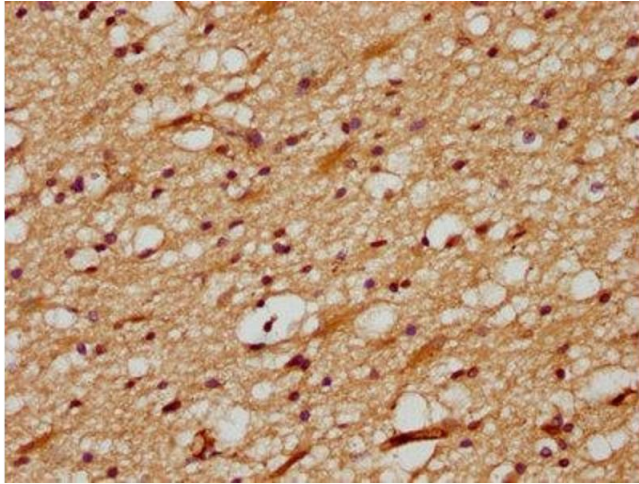
Buffer: Preservative: 0.03 % Proclin 300
Constituents: 50 % Glycerol, 0.01M PBS, PH 7.4

Preservative: ProClin

Precaution of Use: This product contains ProClin: a POISONOUS AND HAZARDOUS SUBSTANCE which should be handled by trained staff only.

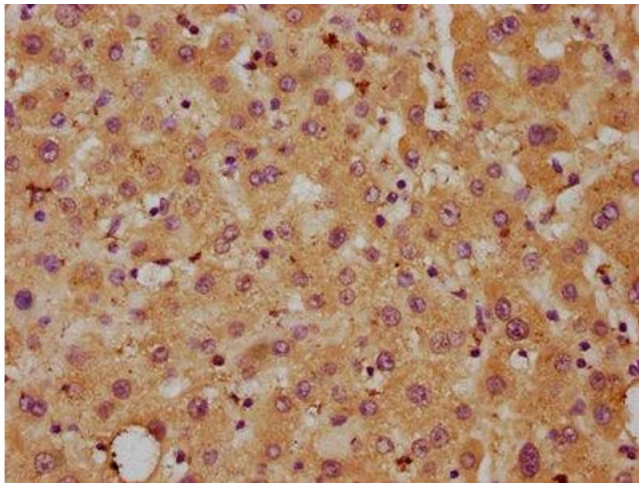
Storage: -20 °C,-80 °C

Storage Comment: Upon receipt, store at -20°C or -80°C. Avoid repeated freeze.



Immunohistochemistry

Image 1. IHC image of ABIN7149649 diluted at 1:700 and staining in paraffin-embedded human brain tissue performed on a Leica Bond™ system. After dewaxing and hydration, antigen retrieval was mediated by high pressure in a citrate buffer (pH 6.0). Section was blocked with 10 % normal goat serum 30 min at RT. Then primary antibody (1 % BSA) was incubated at 4 °C overnight. The primary is detected by a biotinylated secondary antibody and visualized using an HRP conjugated SP system.



Immunohistochemistry

Image 2. IHC image of ABIN7149649 diluted at 1:700 and staining in paraffin-embedded human liver tissue performed on a Leica Bond™ system. After dewaxing and hydration, antigen retrieval was mediated by high pressure in a citrate buffer (pH 6.0). Section was blocked with 10 % normal goat serum 30 min at RT. Then primary antibody (1 % BSA) was incubated at 4 °C overnight. The primary is detected by a biotinylated secondary antibody and visualized using an HRP conjugated SP system.