



[Go to Product page](#)

Datasheet for ABIN7149657  
**anti-SGCD antibody (AA 60-289)**

3 Images

### Overview

Quantity:	100 µL
Target:	SGCD
Binding Specificity:	AA 60-289
Reactivity:	Human
Host:	Rabbit
Clonality:	Polyclonal
Conjugate:	This SGCD antibody is un-conjugated
Application:	Western Blotting (WB), Immunohistochemistry (IHC), ELISA

### Product Details

Immunogen:	Recombinant Human Delta-sarcoglycan protein (60-289AA)
Isotype:	IgG
Cross-Reactivity:	Human, Mouse
Purification:	Antigen Affinity Purified

### Target Details

Target:	SGCD
Alternative Name:	SGCD ( <a href="#">SGCD Products</a> )
Background:	Background: Component of the sarcoglycan complex, a subcomplex of the dystrophin-glycoprotein complex which forms a link between the F-actin cytoskeleton and the extracellular

## Target Details

---

matrix.

Aliases: 35 kDa dystrophin associated glycoprotein antibody, 35 kDa dystrophin-associated glycoprotein antibody, 35DAG antibody, CMD1L antibody, DAGD antibody, Delta-sarcoglycan antibody, Delta-SG antibody, Dystrophin associated glycoprotein delta sarcoglycan antibody, LGMD2F antibody, MGC22567 antibody, Placental delta sarcoglycan antibody, Sarcoglycan delta (35 kDa dystrophin associated glycoprotein) antibody, SG delta antibody, SGCD antibody, SGCD\_HUMAN antibody, SGCDP antibody, SGD antibody

---

UniProt: [Q92629](#)

---

Pathways: [Maintenance of Protein Location](#)

## Application Details

---

Application Notes: Recommended dilution: WB:1:1000-1:5000, IHC:1:20-1:200,

---

Restrictions: For Research Use only

## Handling

---

Format: Liquid

---

Buffer: PBS with 0.02 % sodium azide, 50 % glycerol, pH 7.3.

---

Preservative: Sodium azide

---

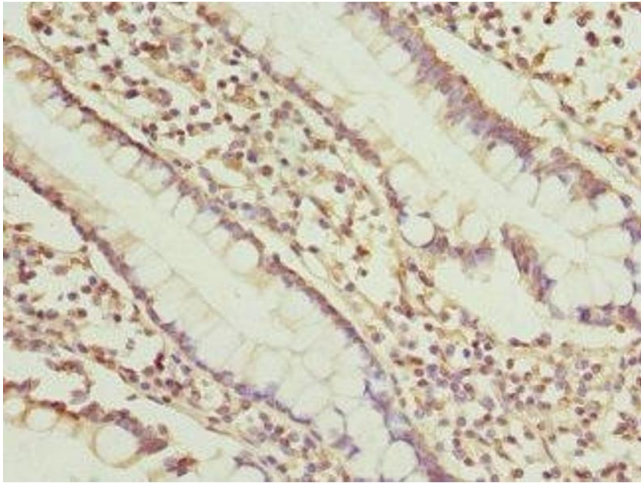
Precaution of Use: This product contains Sodium azide: a POISONOUS AND HAZARDOUS SUBSTANCE which should be handled by trained staff only.

---

Storage: -20 °C,-80 °C

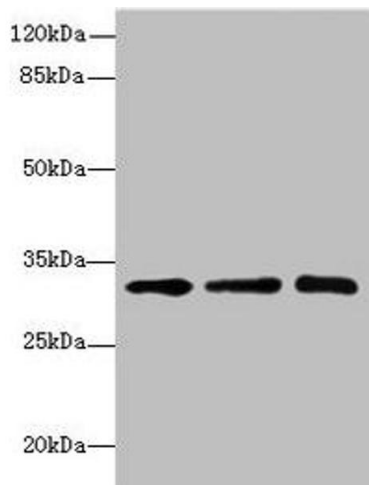
---

Storage Comment: Upon receipt, store at -20°C or -80°C. Avoid repeated freeze.



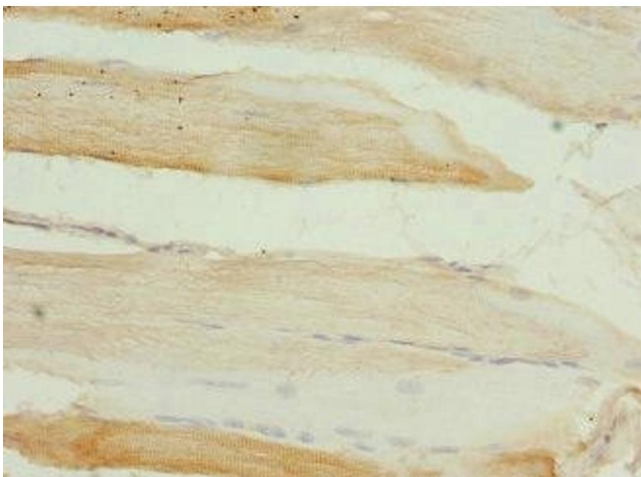
### Immunohistochemistry

**Image 1.** Immunohistochemistry of paraffin-embedded human small intestine tissue using ABIN7149657 at dilution of 1:100



### Western Blotting

**Image 2.** Western blot All lanes: RRAS2 antibody at 4.55  $\mu$ g/mL Lane 1: Mouse kidney tissue Lane 2: Mouse liver tissue Lane 3: Jurkat whole cell lysate Secondary Goat polyclonal to rabbit IgG at 1/10000 dilution Predicted band size: 33, 29 kDa Observed band size: 33 kDa



### Immunohistochemistry

**Image 3.** Immunohistochemistry of paraffin-embedded human skeletal muscle tissue using ABIN7149657 at dilution of 1:100