



[Go to Product page](#)

Datasheet for ABIN7149738

anti-DEPDC1B antibody (AA 343-529)

4 Images

Overview

Quantity:	100 µg
Target:	DEPDC1B
Binding Specificity:	AA 343-529
Reactivity:	Human
Host:	Rabbit
Clonality:	Polyclonal
Conjugate:	This DEPDC1B antibody is un-conjugated
Application:	ELISA, Western Blotting (WB), Immunohistochemistry (IHC), Immunofluorescence (IF)

Product Details

Immunogen:	Recombinant Human DEP domain-containing protein 1B protein (343-529AA)
Isotype:	IgG
Cross-Reactivity:	Human
Purification:	>95%, Protein G purified

Target Details

Target:	DEPDC1B
Alternative Name:	DEPDC1B (DEPDC1B Products)
Background:	Background: cytosol, GTPase activator activity, cell migration, positive regulation of Wnt signaling pathway, regulation of small GTPase mediated signal transduction

Target Details

Aliases: DEPDC1B antibody, XTP8 antibody, DEP domain-containing protein 1B antibody, HBV X-transactivated gene 8 protein antibody, HBV XAg-transactivated protein 8 antibody

UniProt: [Q8WUY9](#)

Application Details

Application Notes: Recommended dilution: WB:1:500-1:5000, IHC:1:20-1:200, IF:1:50-1:200,

Restrictions: For Research Use only

Handling

Format: Liquid

Buffer: Preservative: 0.03 % Proclin 300
Constituents: 50 % Glycerol, 0.01M PBS, pH 7.4

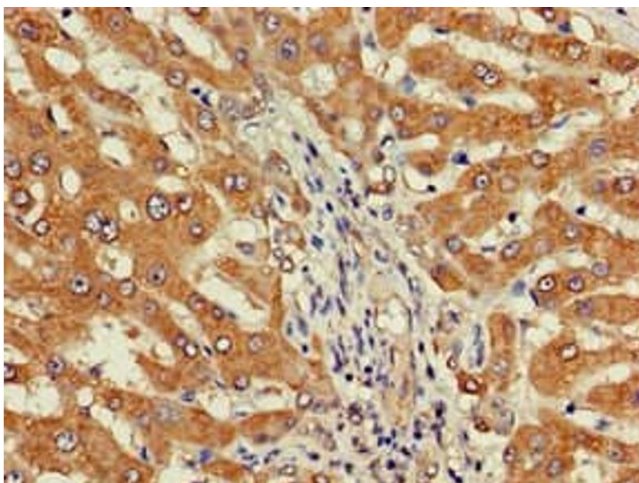
Preservative: ProClin

Precaution of Use: This product contains ProClin: a POISONOUS AND HAZARDOUS SUBSTANCE which should be handled by trained staff only.

Storage: -20 °C,-80 °C

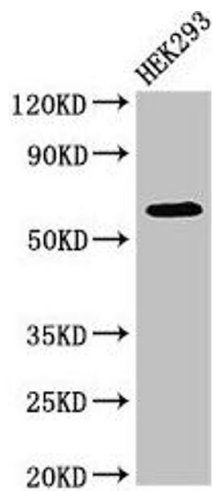
Storage Comment: Upon receipt, store at -20°C or -80°C. Avoid repeated freeze.

Images



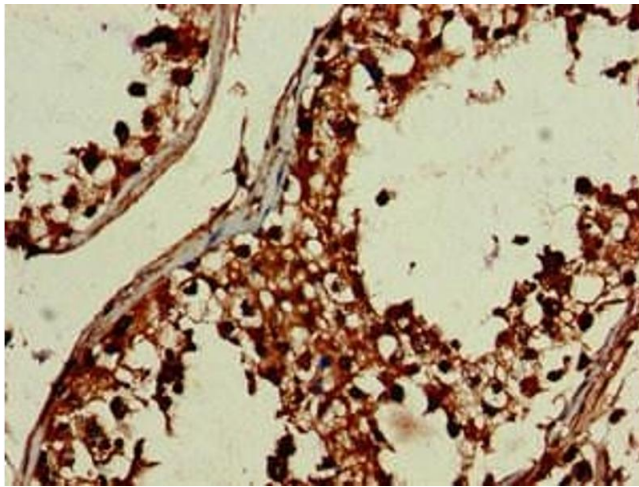
Immunohistochemistry

Image 1. Immunohistochemistry of paraffin-embedded human liver cancer using ABIN7149738 at dilution of 1:100



Western Blotting

Image 2. Western Blot Positive WB detected in: HEK293 whole cell lysate All lanes: DEPDC1B antibody at 4 µg/mL Secondary Goat polyclonal to rabbit IgG at 1/50000 dilution Predicted band size: 62, 55 kDa Observed band size: 62 kDa



Immunohistochemistry

Image 3. Immunohistochemistry of paraffin-embedded human testis tissue using ABIN7149738 at dilution of 1:100

Please check the [product details page](#) for more images. Overall 4 images are available for ABIN7149738.