



[Go to Product page](#)

Datasheet for ABIN7149746
anti-DSE antibody (AA 23-270)

3 Images

Overview

Quantity:	100 µg
Target:	DSE
Binding Specificity:	AA 23-270
Reactivity:	Human
Host:	Rabbit
Clonality:	Polyclonal
Conjugate:	This DSE antibody is un-conjugated
Application:	ELISA, Immunohistochemistry (IHC), Immunofluorescence (IF)

Product Details

Immunogen:	Recombinant Human Dermatan-sulfate epimerase protein (23-270AA)
Isotype:	IgG
Cross-Reactivity:	Human
Purification:	>95%, Protein G purified

Target Details

Target:	DSE
Alternative Name:	DSE (DSE Products)
Background:	Background: Converts D-glucuronic acid to L-iduronic acid (IdoUA) residues. Aliases: Chondroitin glucuronate 5 epimerase antibody, Chondroitin-glucuronate 5-epimerase

Target Details

antibody, Dermatan sulfate epimerase antibody, Dermatan-sulfate epimerase antibody, DS epimerase antibody, DSE antibody, DSE_HUMAN antibody, DSEPI antibody, OTTHUMP00000040406 antibody, SART 2 antibody, SART-2 antibody, Squamous cell carcinoma antigen recognized by T cells 2 antibody, Squamous cell carcinoma antigen recognized by T-cells 2 antibody

UniProt: [Q9UL01](#)

Pathways: [Glycosaminoglycan Metabolic Process](#)

Application Details

Application Notes: Recommended dilution: IHC:1:20-1:200, IF:1:50-1:200,

Restrictions: For Research Use only

Handling

Format: Liquid

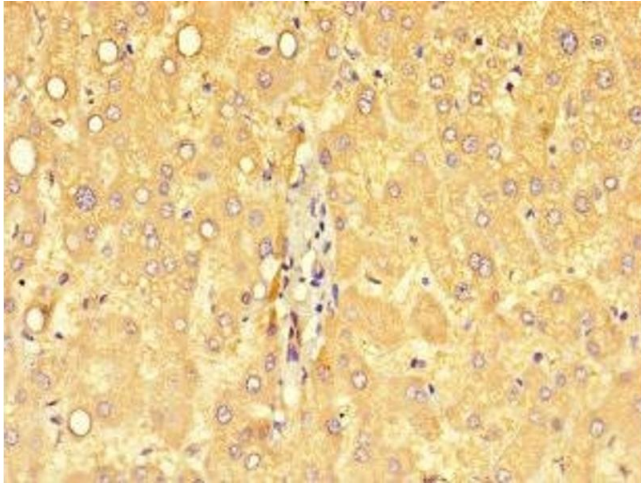
Buffer: Preservative: 0.03 % Proclin 300
Constituents: 50 % Glycerol, 0.01M PBS, PH 7.4

Preservative: ProClin

Precaution of Use: This product contains ProClin: a POISONOUS AND HAZARDOUS SUBSTANCE which should be handled by trained staff only.

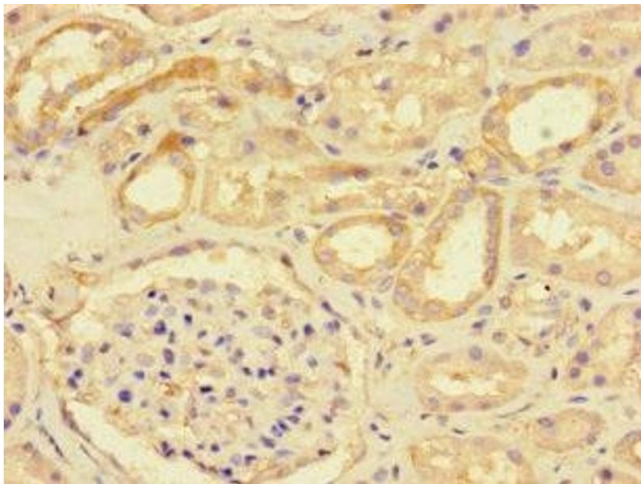
Storage: -20 °C,-80 °C

Storage Comment: Upon receipt, store at -20°C or -80°C. Avoid repeated freeze.



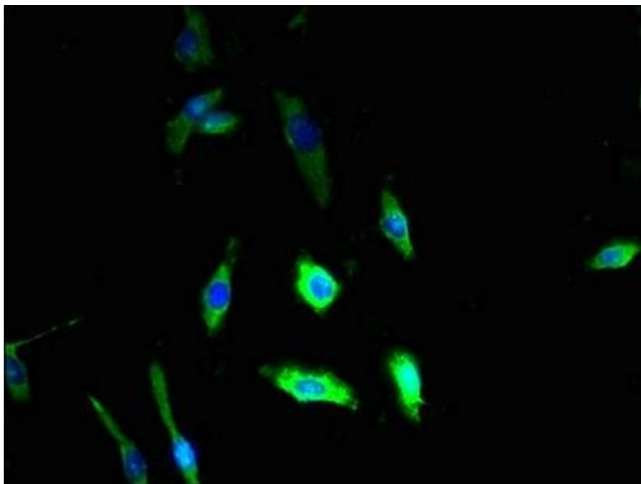
Immunohistochemistry

Image 1. Immunohistochemistry of paraffin-embedded human liver cancer using ABIN7149746 at dilution of 1:100



Immunohistochemistry

Image 2. Immunohistochemistry of paraffin-embedded human kidney tissue using ABIN7149746 at dilution of 1:100



Immunofluorescence

Image 3. Immunofluorescent analysis of U251 cells using ABIN7149746 at dilution of 1:100 and Alexa Fluor 488-conjugated AffiniPure Goat Anti-Rabbit IgG(H+L)