

Datasheet for ABIN7149752
anti-Dermcidin antibody (AA 20-110)[Go to Product page](#)

1 Image

Overview

Quantity:	100 µg
Target:	Dermcidin (DCD)
Binding Specificity:	AA 20-110
Reactivity:	Human
Host:	Rabbit
Clonality:	Polyclonal
Conjugate:	This Dermcidin antibody is un-conjugated
Application:	ELISA, Immunohistochemistry (IHC)

Product Details

Immunogen:	Recombinant Human Dermcidin protein (20-110AA)
Isotype:	IgG
Cross-Reactivity:	Human
Purification:	>95%, Protein G purified

Target Details

Target:	Dermcidin (DCD)
Alternative Name:	DCD (DCD Products)
Background:	Background: DCD-1 displays antimicrobial activity thereby limiting skin infection by potential pathogens in the first few hours after bacterial colonization. Highly effective against E.coli,

Target Details

E.faecalis, S.aureus and C.albicans. Optimal pH and salt concentration resemble the conditions in sweat. Also exhibits proteolytic activity. Survival-promoting peptide promotes survival of neurons and displays phosphatase activity. It may bind IgG.

Aliases: AIDD antibody, DCD 1 antibody, dcd antibody, DCD-1 antibody, DCD_HUMAN antibody, Dermcidin antibody, DSEP antibody, HCAP antibody, PIF antibody, Preproteolysin antibody

UniProt: [P81605](#)

Application Details

Application Notes: Recommended dilution: IHC:1:200-1:500,

Restrictions: For Research Use only

Handling

Format: Liquid

Buffer: Preservative: 0.03 % Proclin 300
Constituents: 50 % Glycerol, 0.01M PBS, PH 7.4

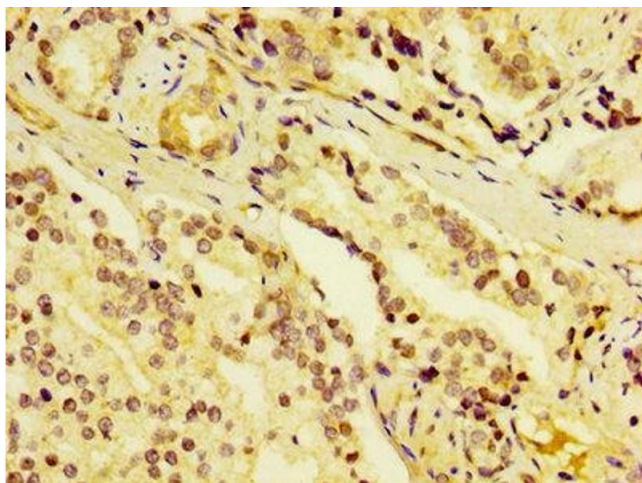
Preservative: ProClin

Precaution of Use: This product contains ProClin: a POISONOUS AND HAZARDOUS SUBSTANCE which should be handled by trained staff only.

Storage: -20 °C,-80 °C

Storage Comment: Upon receipt, store at -20°C or -80°C. Avoid repeated freeze.

Images



Immunohistochemistry

Image 1. IHC image of ABIN7149752 diluted at 1:400 and staining in paraffin-embedded human prostate cancer performed on a Leica Bond™ system. After dewaxing and hydration, antigen retrieval was mediated by high pressure in a citrate buffer (pH 6.0). Section was blocked with 10% normal goat serum 30min at RT. Then primary antibody (1% BSA) was incubated at 4°C overnight. The primary is detected by a biotinylated secondary antibody and

visualized using an HRP conjugated SP system.