



[Go to Product page](#)

Datasheet for ABIN7149816  
**anti-DPPA5 antibody (AA 1-116)**

4 Images

Overview

Quantity:	100 µg
Target:	DPPA5
Binding Specificity:	AA 1-116
Reactivity:	Human
Host:	Rabbit
Clonality:	Polyclonal
Conjugate:	This DPPA5 antibody is un-conjugated
Application:	ELISA, Western Blotting (WB), Immunohistochemistry (IHC), Immunofluorescence (IF)

Product Details

Immunogen:	Recombinant Human Developmental pluripotency-associated 5 protein (1-116AA)
Isotype:	IgG
Cross-Reactivity:	Human, Mouse
Purification:	>95%, Protein G purified

Target Details

Target:	DPPA5
Alternative Name:	DPPA5 ( <a href="#">DPPA5 Products</a> )
Background:	Background: Involved in the maintenance of embryonic stem (ES) cell pluripotency. Dispensable for self-renewal of pluripotent ES cells and establishment of germ cells. Associates with

## Target Details

specific target mRNAs (By similarity).

Aliases: Developmental pluripotency associated 5 antibody, Developmental pluripotency-associated 5 protein antibody, DPPA5 antibody, DPPA5\_HUMAN antibody, Embryonal stem cell specific gene 1 protein antibody, Embryonal stem cell-specific gene 1 protein antibody, Esg 1 antibody, Esg-1 antibody, ESG1 antibody, hDPPA5 antibody

UniProt: [A6NC42](#)

## Application Details

Application Notes: Recommended dilution: WB:1:500-1:5000, IHC:1:200-1:500, IF:1:50-1:200,

Restrictions: For Research Use only

## Handling

Format: Liquid

Buffer: Preservative: 0.03 % Proclin 300  
Constituents: 50 % Glycerol, 0.01M PBS, pH 7.4

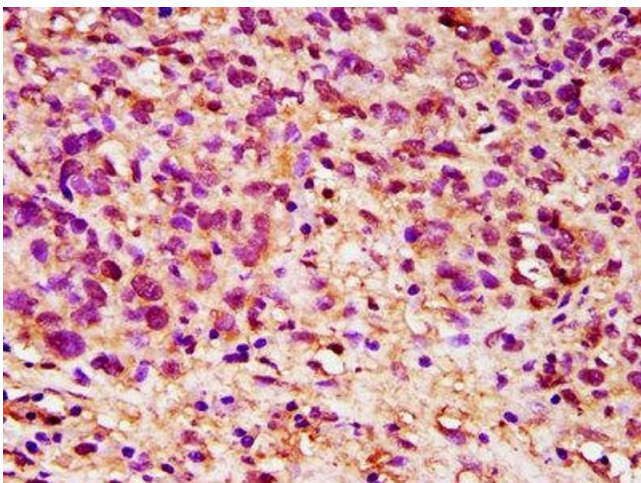
Preservative: ProClin

Precaution of Use: This product contains ProClin: a POISONOUS AND HAZARDOUS SUBSTANCE which should be handled by trained staff only.

Storage: -20 °C,-80 °C

Storage Comment: Upon receipt, store at -20°C or -80°C. Avoid repeated freeze.

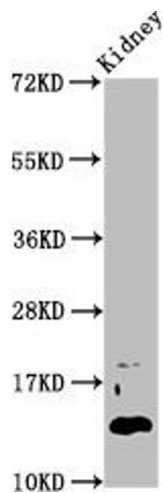
## Images



### Immunohistochemistry

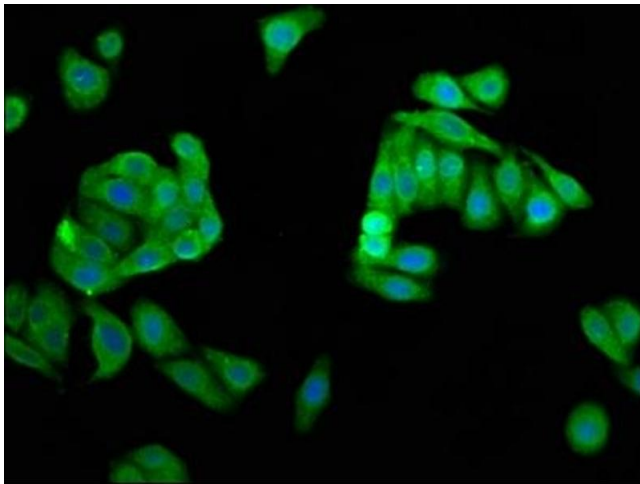
**Image 1.** IHC image of ABIN7149816 diluted at 1:200 and staining in paraffin-embedded human ovarian cancer performed on a Leica Bond™ system. After dewaxing and hydration, antigen retrieval was mediated by high pressure in a citrate buffer (pH 6.0). Section was blocked with 10 % normal goat serum 30 min at RT. Then primary antibody (1 % BSA) was incubated at 4 °C overnight. The primary is detected by a biotinylated secondary antibody and

visualized using an HRP conjugated SP system.



### Western Blotting

**Image 2.** Western Blot Positive WB detected in: Mouse kidney tissue All lanes: DPPA5 antibody at 4.6 µg/mL Secondary Goat polyclonal to rabbit IgG at 1/50000 dilution Predicted band size: 14 kDa Observed band size: 14 kDa



### Immunofluorescence

**Image 3.** Immunofluorescence staining of HepG2 cells with ABIN7149816 at 1:66, counter-stained with DAPI. The cells were fixed in 4 % formaldehyde, permeabilized using 0.2 % Triton X-100 and blocked in 10 % normal Goat Serum. The cells were then incubated with the antibody overnight at 4 °C. The secondary antibody was Alexa Fluor 488-conjugated AffiniPure Goat Anti-Rabbit IgG(H+L).

Please check the [product details page](#) for more images. Overall 4 images are available for ABIN7149816.